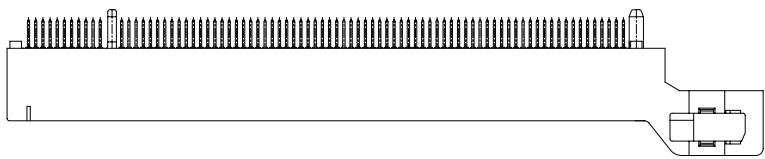
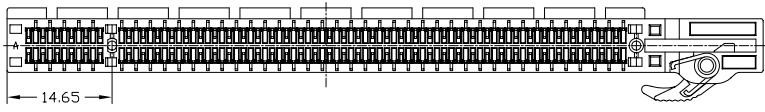
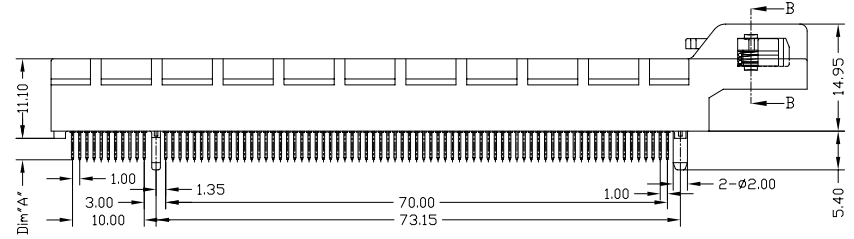
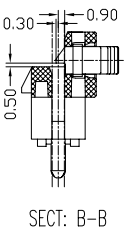
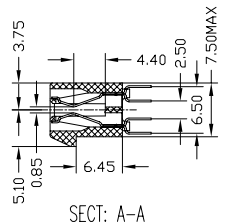
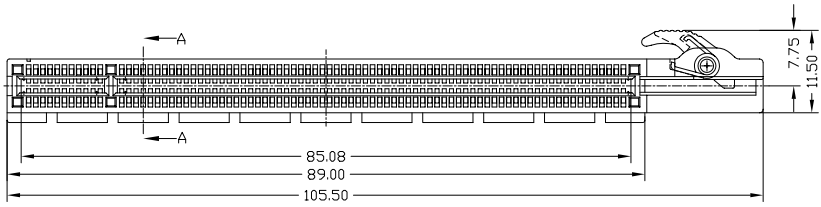


REV.	ECN.NO.	DATE
A	RELEASED	09/10/07



Part NO.	Dim "A"
WPCS-164AN4PB22UWR	2.50mm
WPCS-164AN4PB32UWR	3.00mm

NOTES:
*Material

Body: Nylon46,UL 94V-0 Rated.
Plastic Ear: Nylon66,UL 94V-2 Rated. Color: White.
Spring: 65Mn.
Contacts: Brass
Plating: Gold plating over Nickel on contact area; Tin plating on Solder Tail.

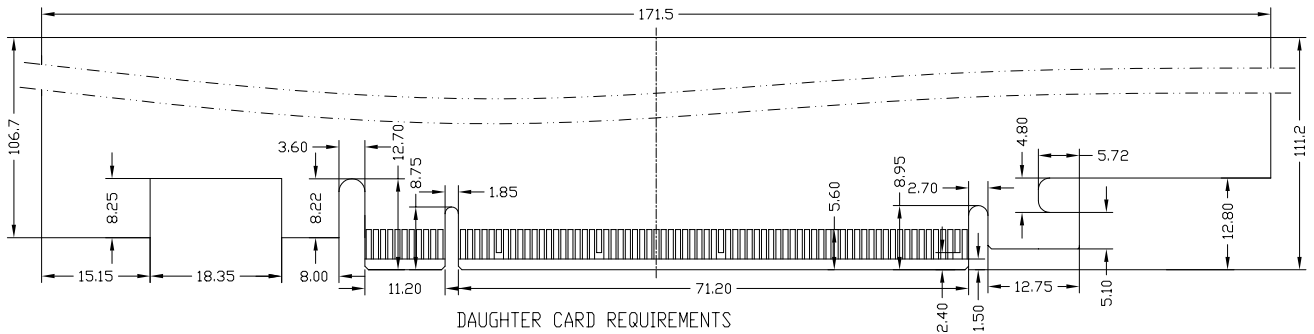
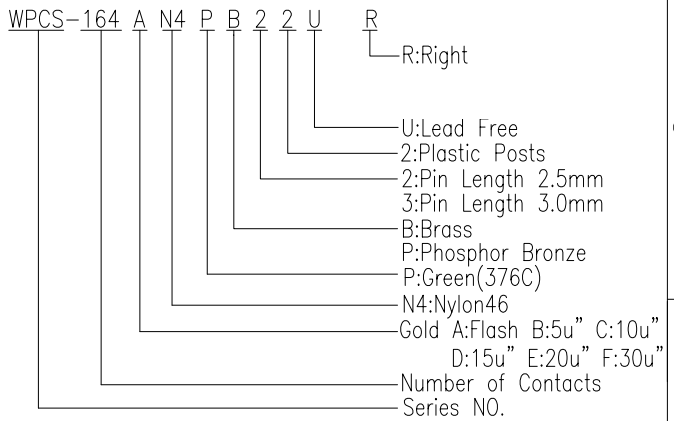
*Mechanical:

Insertion Force: 1.15N max per contact pair;
Withdrawal Force: 0.15N min per contact pair;
Contact Retention Force: 4.9N min per contact;

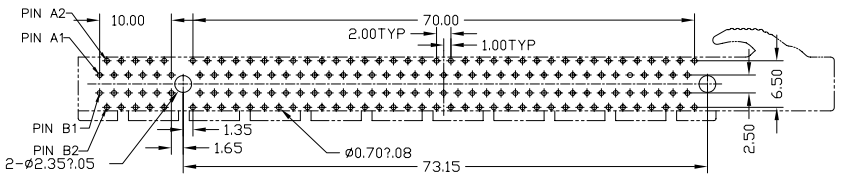
*Electrical Specification

Contact Resistance : 30 Milliohms Max.
Current Resistance : 1.1 Ampere
Insulation Resistance : 1000 Megohms Min, At 500V AC.
Operating Temperature : -55°C to +105°C

*How to order:



DAUGHTER CARD REQUIREMENTS



P.C.B Layout

REV	Units		mm	Scale	1:1	Drawing By	Data		 www.allconnectors.eu info@allconnectors.eu Tel: +49 (0)711 / 358 110 20 Fax +49 (0)711 / 358 110 25		
	Tolerance Unless		Otherwise Specified		Lulu	09/10/07					
	.X	~ ±0.38		Reviewed By		Data		Date	09/10/07		
	.XX	~ ±0.25		Stacy		09/10/07		Sheet	1 of 1		
	.XXX	~ ±0.20		Approval By		Data		Title			
	Angle	~ ± 3°		Roger		09/10/07		Third Angle Projection			
								Drawing No.	WPCS-164PS-AN-W094	REV	A

PCI Express 164 Pin Connector
Clamp Right Side Type(Plastic Posts)