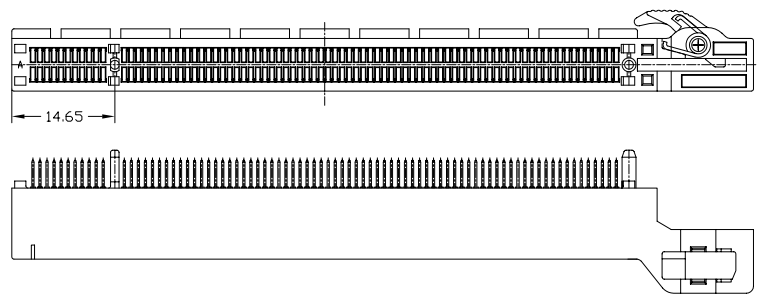
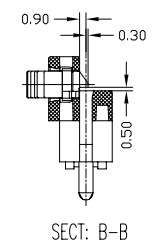
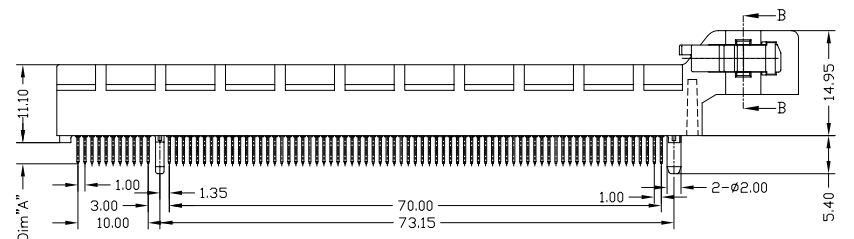
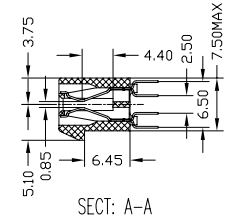
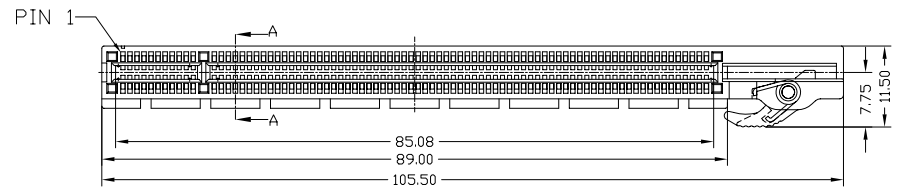


REV.	ECN.NO.	DATE
A	RELEASED	09/13/07



Part NO.	Dim "A"
WPCS-164AN4PB22UWL	2.50mm
WPCS-164AN4PB32UWL	3.00mm

**NOTES:**

**\*Material**

Body: Nylon46,UL 94V-0 Rated.Color: Green.  
 Plastic Ear: Nylon66,UL 94V-2 Rated.Color: White.  
 Spring: 65Mn.  
 Contacts: Brass  
 Plating: Gold plating over Nickel on contact area; Tin plating on Solder Tail.

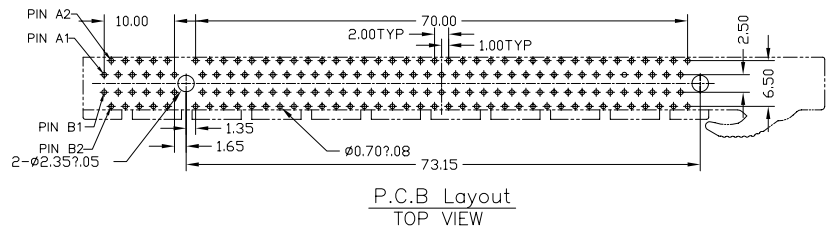
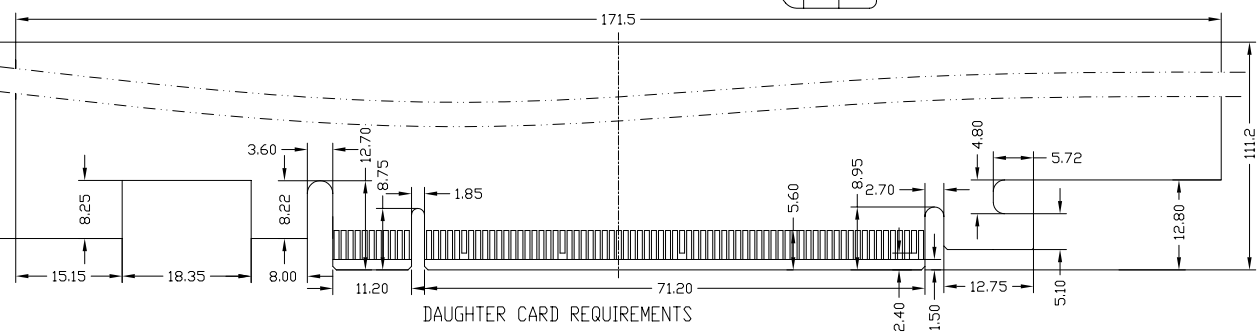
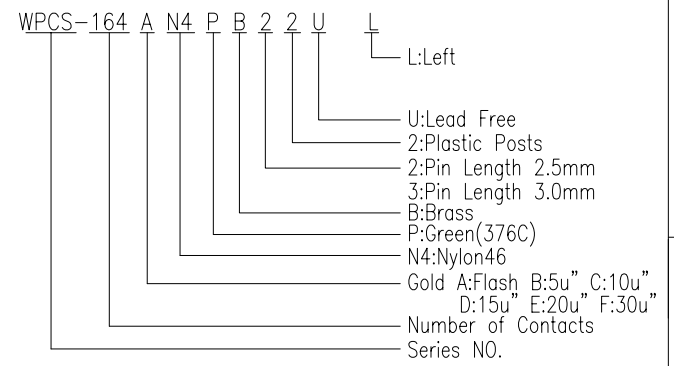
**\*Mechanical:**

Insertion Force: 1.15N max per contact pair;  
 Withdrawal Force: 0.15N min per contact pair;  
 Contact Retention Force: 4.9N min per contact;

**\*Electrical Specification**

Contact Resistance : 30 Milliohms Max.  
 Current Resistance : 1.1 Ampere  
 Insulation Resistance : 1000 Megohms Min, At 500V AC.  
 Operating Temperature : -55°c to +105°c

**\*How to order:**



Units	mm	Scale	1:1
Tolerance Unless Otherwise Specified			
.X	~	±0.38	
.XX	~	±0.25	
.XXX	~	±0.20	
Angle	~	± 3°	

 <small>www.allconnectors.eu   info@allconnectors.eu Tel. +49 (0)711 / 358 110 20   Fax +49 (0)711 / 358 110 25</small>		<b>Date</b> 09/13/07 <b>Sheet</b> 1 of 1 <b>Title</b> PCI Express 164 Pin Connector Clamp Left SideType(Plastic Posts)	
<b>Drawing By</b> Lulu <b>Reviewed By</b> Stacy <b>Approval By</b> Roger	<b>Date</b> 09/13/07 <b>Date</b> 09/13/07 <b>Date</b> 09/13/07	<b>Third Angle Projection</b> 	<b>Drawing No.</b> WPCS-164PS-ANW095 <b>REV</b> A