

REV.	ECN.NO.	DATE
A	RELEASED	02/11/06
E	Modify Dimension and cancel Plastic Posts beside Metal Posts	03/26/08
F	add A:Plastic Posts (Body Lengthens+Black Ear)	08/12/10

**NOTES:**

**\*Material**

Body: Nylon46+30%G.F,UL 94V-0 Rated.Color: Black.  
 Plastic Ear: Nylon66+30%G.F,UL 94V-2 Rated.  
 Spring: 65Mn.  
 Plating: Nickel(40u"Min)  
 Contacts: Brass  
 Plating:Gold plating on contact area,  
 Tin (100u" Min.) plating on solder tail,  
 Nickel (40u" Min.) underplating overall  
 Metal Posts: Brass  
 Plating: Tin(100u"Min)

**\*Mechanical:**

Insertion Force: 1.15N max per contact pair;  
 Withdrawal Force: 0.15N min per contact pair;  
 Contact Retention Force: 4.9N min per contact;

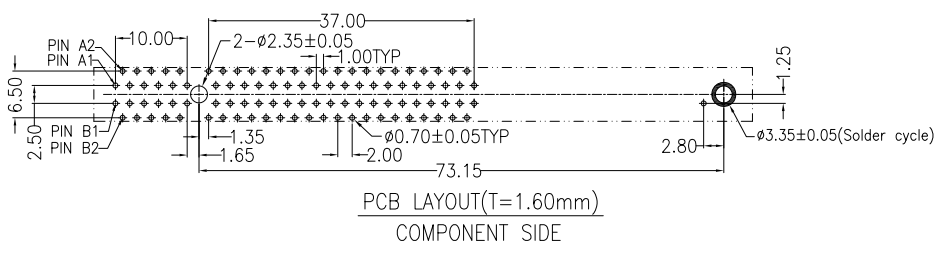
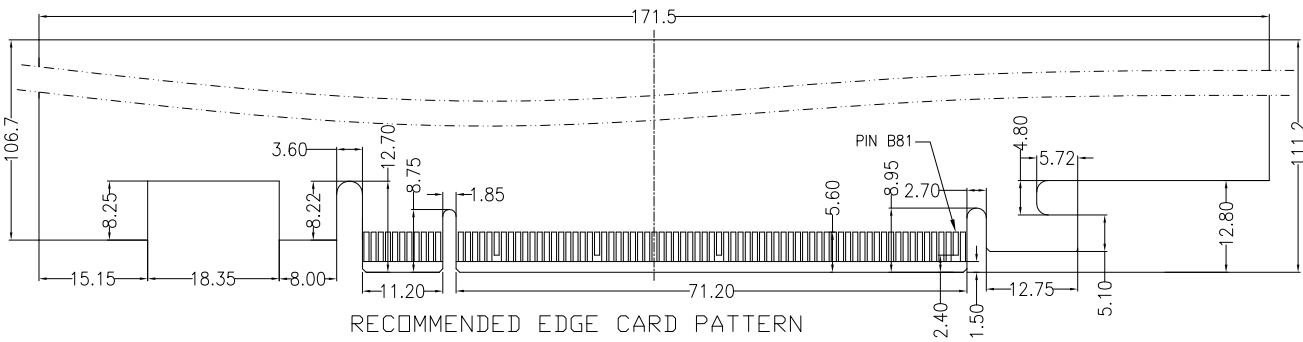
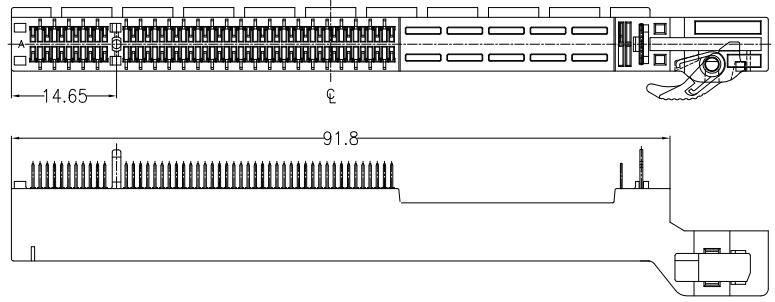
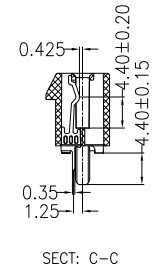
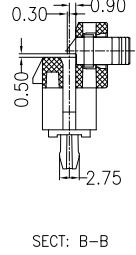
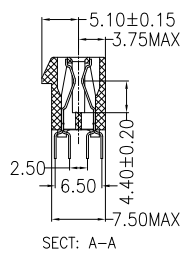
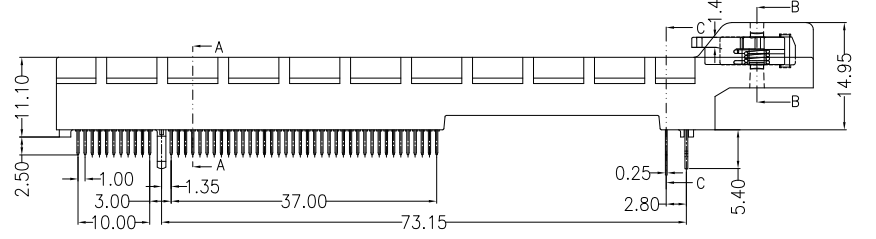
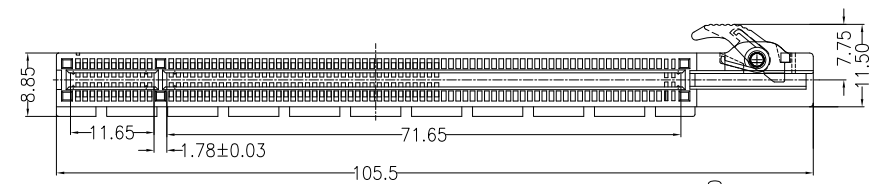
**\*Electrical Specification**

Contact Resistance : 30 Milliohms Max.  
 Current Resistance : 1.1 Ampere  
 Insulation Resistance : 1000 Megohms Min, At 500V AC.  
 Operating Temperature : -55°c to +105°c

**\*How to order:**

WPCS-099AN4FB26U R R:Right

- U:Lead Free
- 6:Plastic Posts (Body Lengthens)
- A:Plastic Posts(Body Lengthens+Black Ear)
- 2:Pin Length 2.5mm
- B:Brass
- F:Blue(297C) G:Orange(1485C)
- 1:Black
- N4:Nylon46
- Gold A:Flash B:5u" C:10u" D:15u" E:20u" F:30u"
- Number of Contacts
- Series NO.



REV add A:Plastic Posts(Body Lengthens+Black Ear)				Drawing By		Data	
Units	mm	Scale	1:1	Lulu		08/12/10	
Tolerance Unless Otherwise Specified				Reviewed By	Data		
.X	~	±0.38		Rosh		08/12/10	
.XX	~	±0.25		Approval By	Data		
.XXX	~	±0.20		Roger		08/13/10	
Angle	~	± 3°					



www.allconnectors.eu | info@allconnectors.eu  
 Tel. +49 (0)711 / 358 110 20 | Fax +49 (0)711 / 358 110 25

Date	08/12/10	Title	PCI Express 99 Pin Connector	
Sheet	1 of 1		Clamp Right Side Type(Plastic Posts)	
Third Angle Projection			(Gigabyte use only)	
Drawing No.	WPCS-099PS-AN-W071	REV	F	