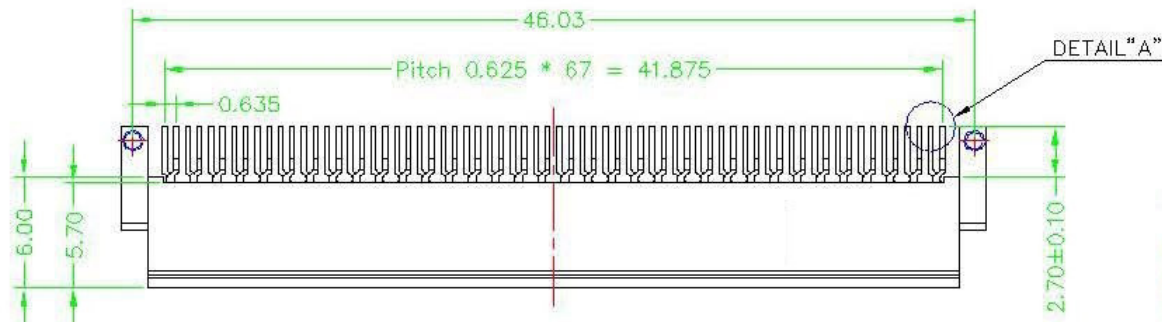
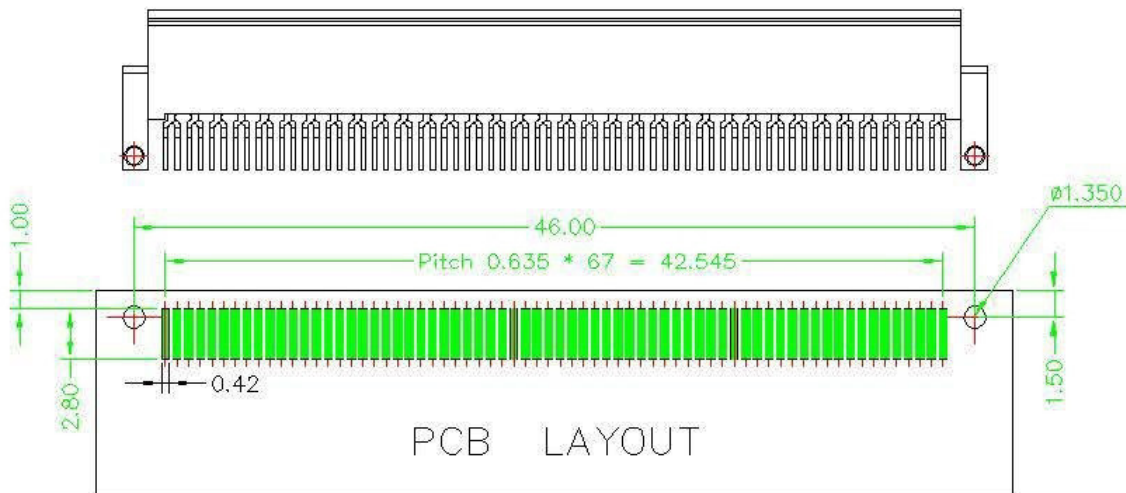
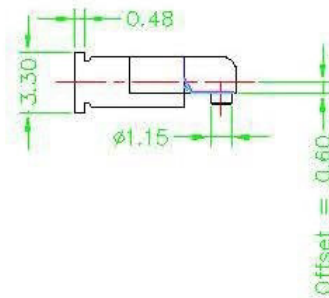
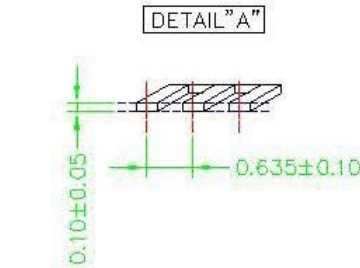
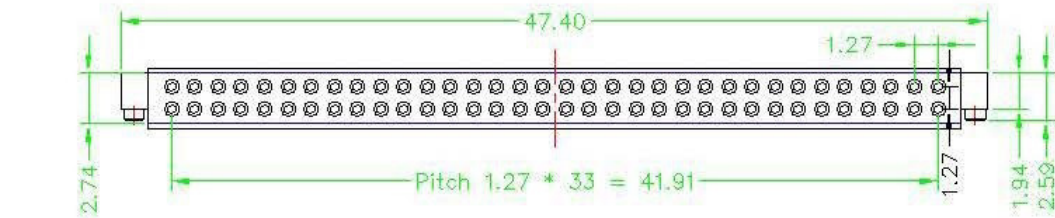


REV.	DESCRIPTION	DATE
A	RELEASE	04 / 10 / 2002

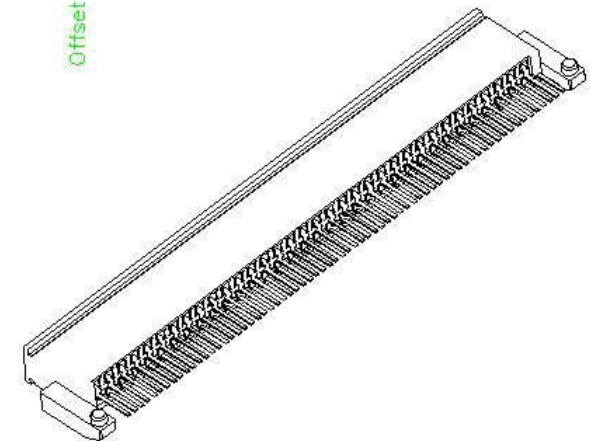


DETAIL "A"



**NOTE**

- A. Material:
- Housing : HTN or LCP, UL94V-0, Black.
  - Contact : Phosphor Bronze C5210RH, T=0.10mm
- B. Plating
- Contact : Underplating 50u" min Nickel. Contact area Selective AU over Nickel plated. Solder tail 100u" min Sn over Nickel plated.



TOLERANCE .X ±0.125 .XX ±0.050 .XXX±0.010	DRAWER <i>Chin Chau Liu</i>		
	CHECK <i>Hui Fung Liu</i>		
 UNITS : mm SCALE 2.5 : 1	DESIGNED <i>Chin Chau Liu</i>	NAME <b>PCMCIA 68pin post engineer SMT TYPE</b> Offset = 0.60	
	APPROVAL <i>Hui Fung Liu</i>	DRAW NO. <b>8690-S6B68X-0</b>	
DATE 05/24/2002	SIZE A4	SHEET 1 OF 1	REV. A