

SWITCH CIRCUIT

MATERIAL AND FINISH AS BELOW

WHEN CARD IS EJECTED

WHEN CARD IS INSERTED

A	Housing	LCP UL94V-0, Black	E	
B	Contact	Phosphor Bronze C5210, Contact Area:Gold Flash Over Nickel	F	
C	Holddown	Brass C2680, Tin Plated	G	
D			H	

SPECIFICATION:

1. ELECTRICAL

- 1.1 Current Rating: 0.5A per pin
- 1.2 Voltage Rating: 50V DC
- 1.3 Contact Resistance: 55mΩ Max
- 1.4 Insulation Resistance: 500MΩ Min
- 1.5 Dielectric Withstanding Voltage: 300VAC

2. MECHANICAL

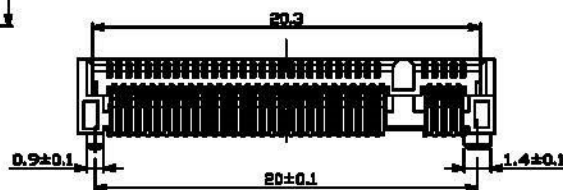
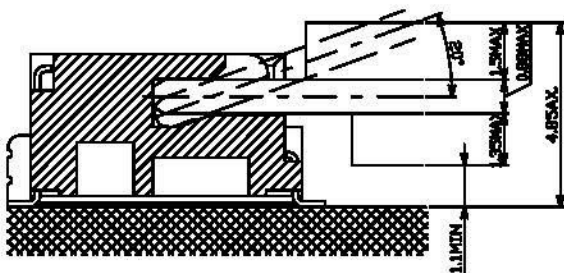
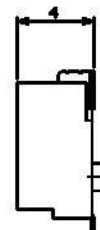
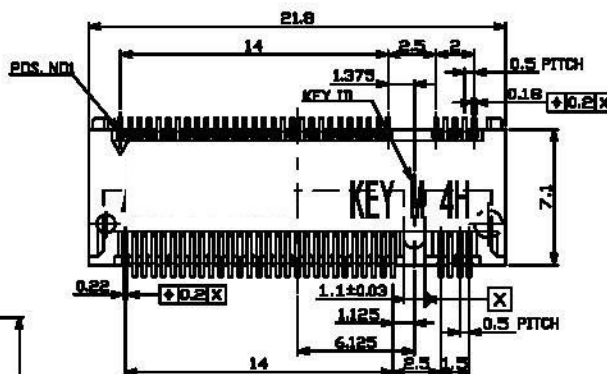
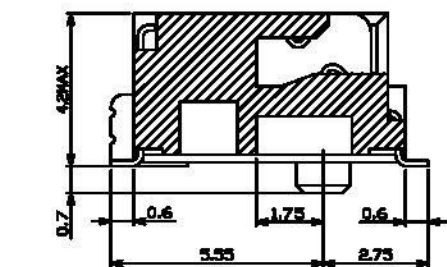
- 2.1 Durability: 200 Cycle
- 2.2 Insertion Force: 20N max.
- 2.3 Extraction Force: 25N max.

3. ENVIRONMENTAL

- 3.1 Operating temperature range: -40°C~+85°C
- 3.2 Storage temperature range: -40°C~+85°C

4. SOLDER ABILITY

- 4.1 Recommended IR Reflow Temperature: 260°C 10Sec
- 4.2 Recommended PCB Thickness: 1.0mm



P1	P2	P3	P4	P5	P6	P7	P8	P9	P10	P11	P12
----	----	----	----	----	----	----	----	----	-----	-----	-----

PIN ASSIGNMENT

123A-42MA0-R01	M.2 Connector, Key M Type Pitch:0.50mm H:4.2mm, Contact Area:Gold Flash
----------------	---

PRODUCT NO.	DESCRIPTION
-------------	-------------

UNLESS OTHERWISE SPECIFIED TOLERANCE

ANGLES	ANG	+5P
	0	±0.3
LINEAR	0.0	±0.25
	0.00	±0.20
SCALE	AS SHOWN	UNIT: mm
DRAWN	Willis	2013/12/09
CHECKED	Angel	2013/12/09
APPROVED	Ken	2013/12/09



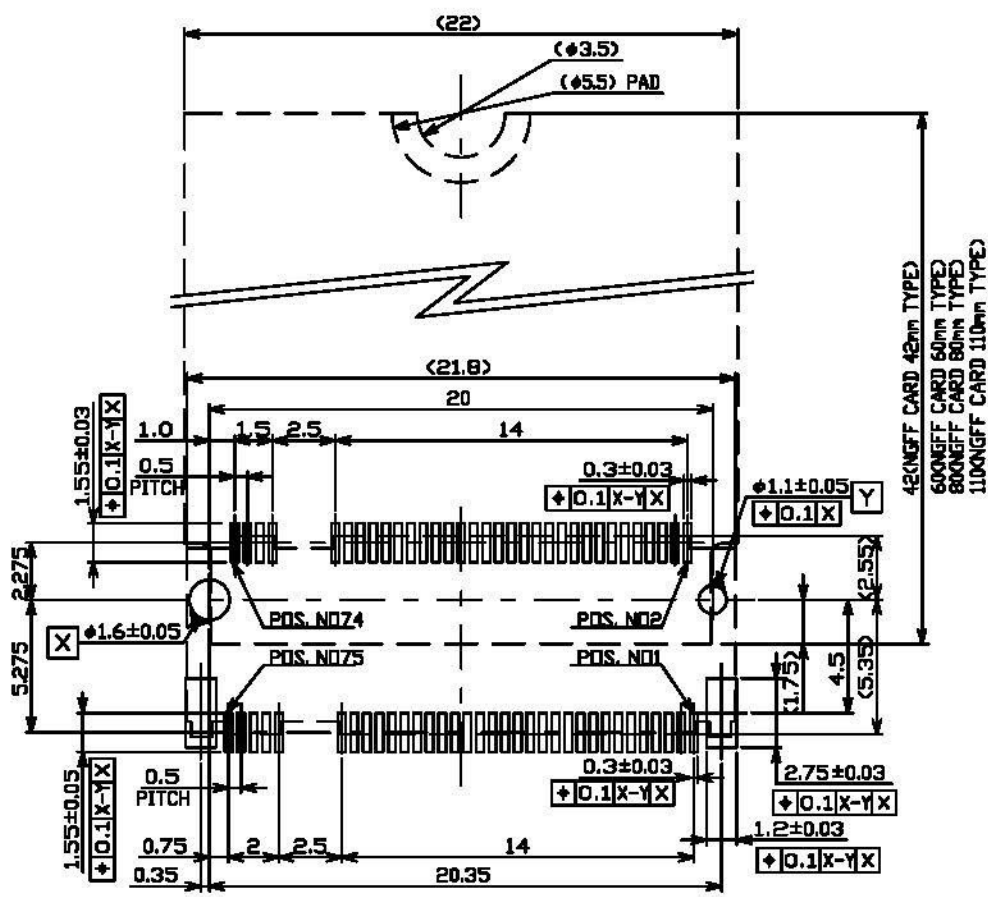
www.allconnectors.de
 Tel: +49(0)711 394303
 info@allconnectors.de
 Fax: +49(0)711 394304
 Allconnectors GmbH
 Kellenmühlstr. 2

DRAWN NAME:
 M.2 Connector Key M H:4.2mm

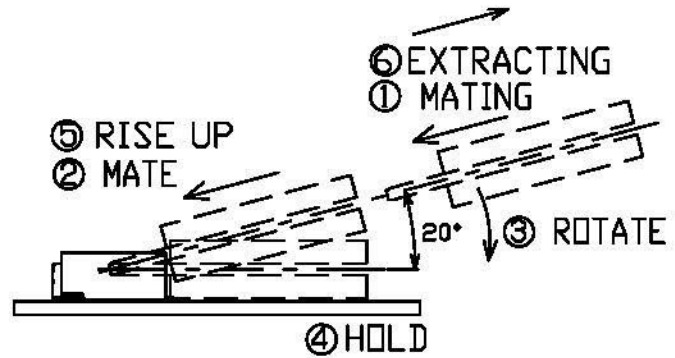
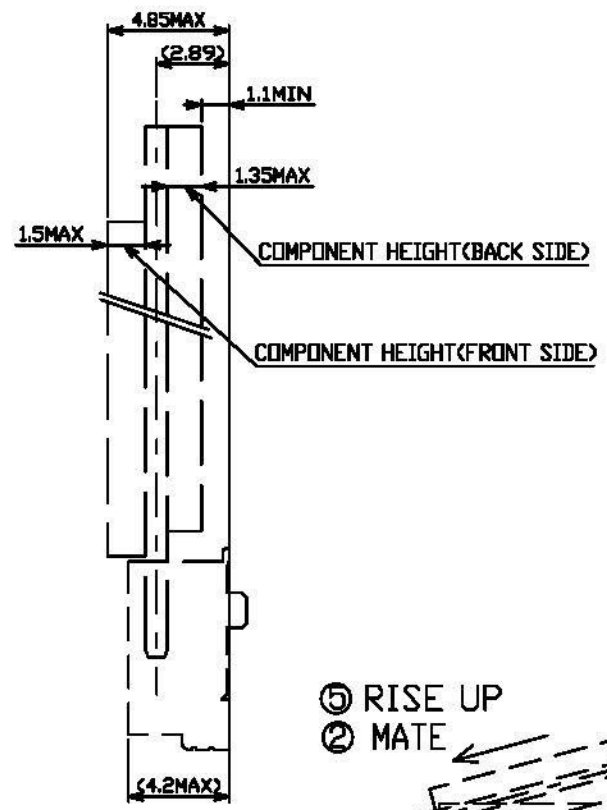
PRODUCT NO. 123A-42MA0-R01

- △ Revise:
- △ Revise:
- △ Revise:

REV.	DESCRIPTION	DATE	REV.	DESCRIPTION	DATE	SIZE	REV.	FILE NAME
1						A4	1.0	123A-42MA0-R01_B_1

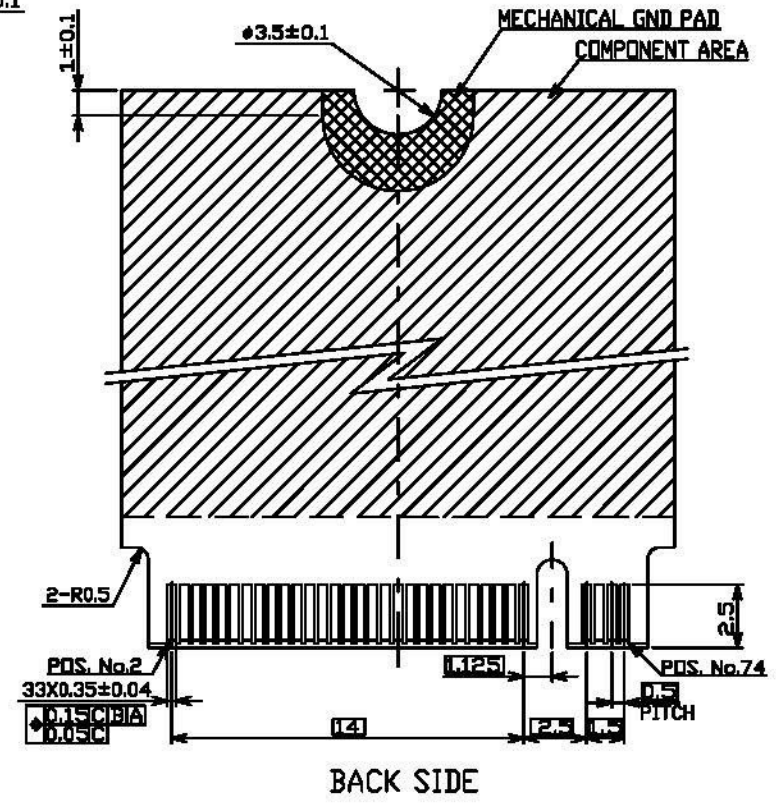
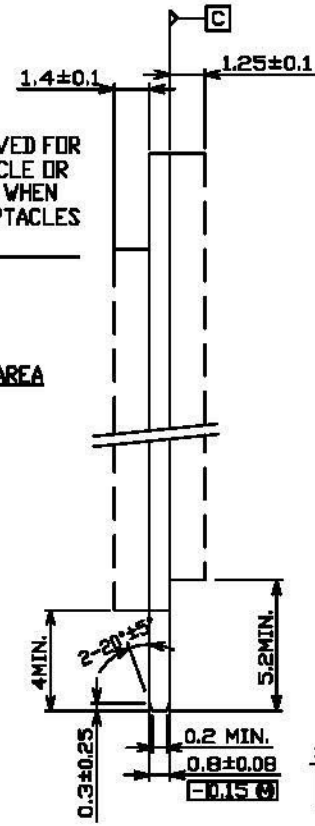
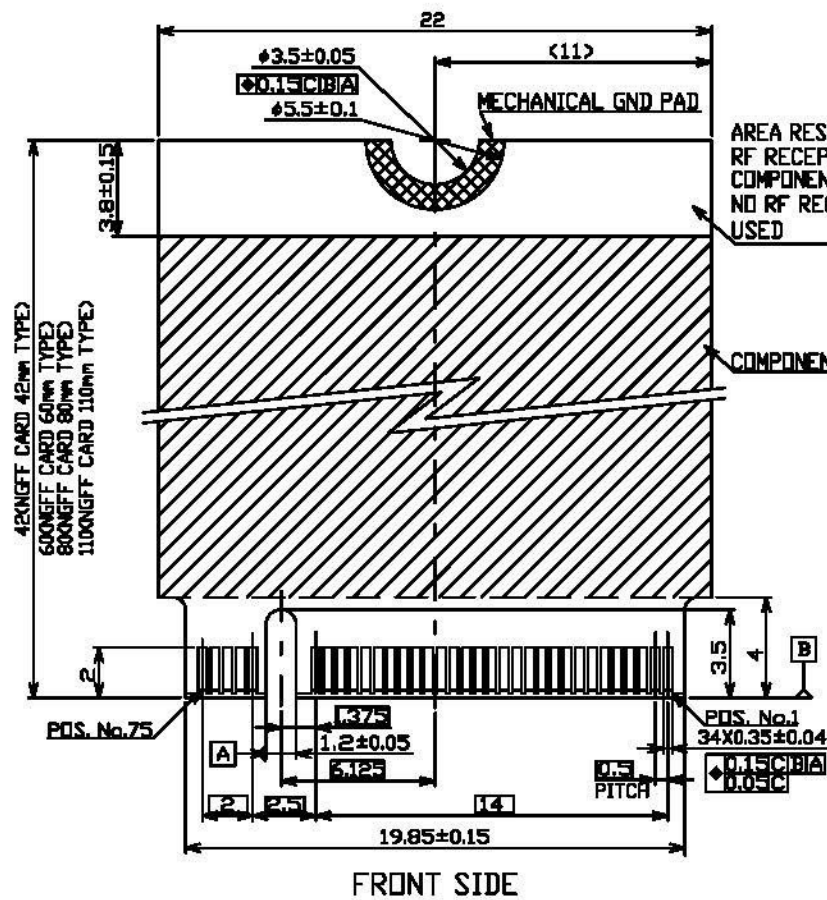


KEY ID "M"
RECOMMENDED P.C.BOARD LAYOUT



REV.	DESCRIPTION	DATE	REV.	DESCRIPTION	DATE	UNLESS OTHERWISE SPECIFIED TOLERANCE			All connectors	
						ANGLES	ANG.	+5P	www.allconnectors.de Tel: 0049 711 705940 20704 Filderstadt - Germany	info@allconnectors.de Fax: 0049 711 705940 Kettnerstr. 25
					LINEAR	0.	±0.25			
						0.00	±0.20			
						SCALE	AS SHOWN	UNIT: mm	DRAWN NAME: M.2 Connector Key M H:4.2mm	
						DRAWN	Willis	2013/12/09	PRODUCT NO. 123A-42MA0-R01	
						CHECKED	Angel	2013/12/09	FILE NAME 123A-42MA0-R01_B_1	
						APPROVED	Ken	2013/12/09	REV. 1.0	
						SIZE	A4			

- △ Revise:
- △ Revise:
- △ Revise:



KEY ID "M"
RECOMMENDED MODULE LAYOUT

UNLESS OTHERWISE SPECIFIED TOLERANCE		
ANGLES	ANG.	+5P
	0.	±0.3
LINEAR	0.0	±0.25
	0.00	±0.20
SCALE	AS SHOWN	UNIT: mm
DRAWN	Willis	2013/12/09
CHECKED	Angel	2013/12/09
APPROVED	Ken	2013/12/09

All Connectors
www.allconnectors.com
 info@allconnectors.com
 7024 Fife Industrial Parkway
 Reno, NV 89509

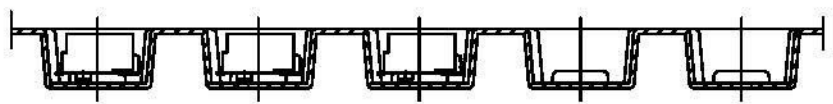
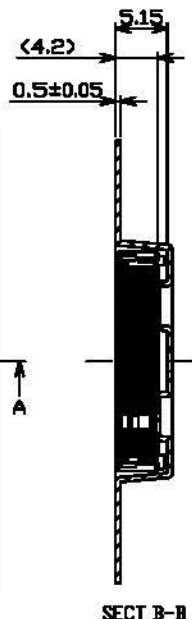
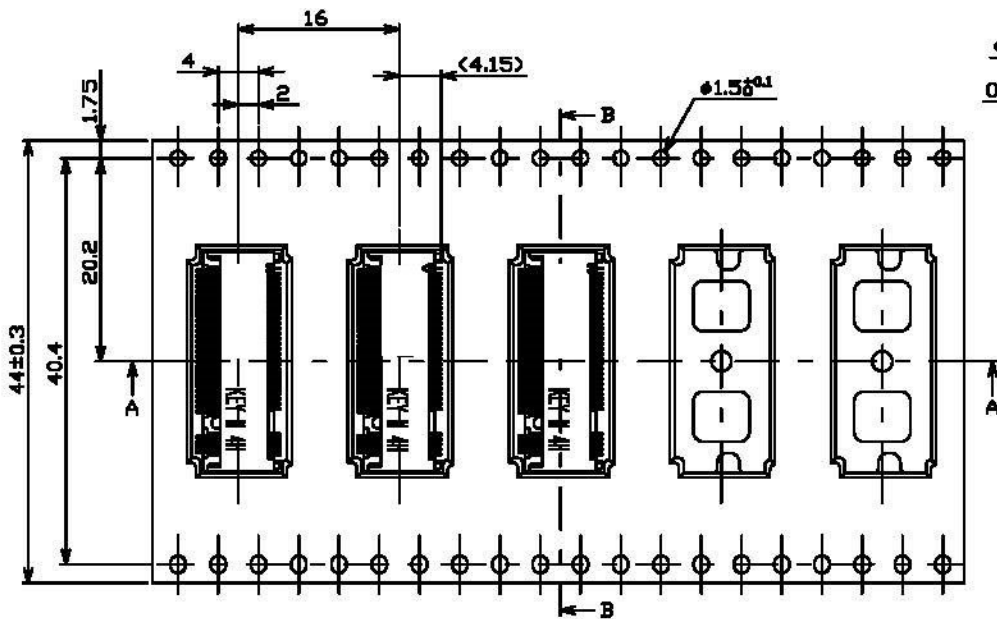
DRAWN NAME:
M.2 Connector Key M H:4.2mm

PRODUCT NO. 123A-42MA0-R01
 FILE NAME 123A-42MA0-R01_B_1

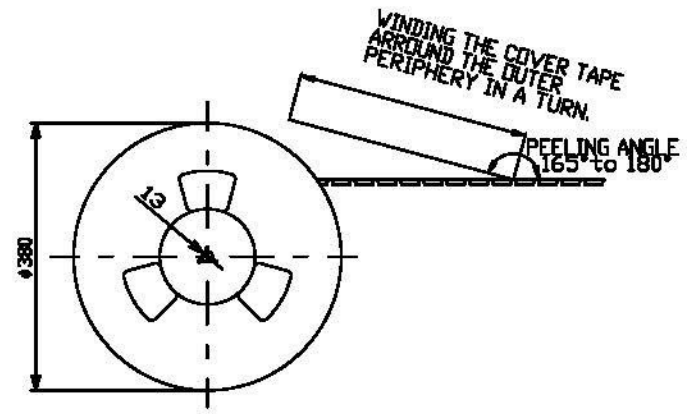
REV.	DESCRIPTION	DATE	REV.	DESCRIPTION	DATE
1			2		
3			4		
5			6		
7			8		
9			10		

- △ Revise:
- △ Revise:
- △ Revise:

DIRECTION OFF TOP OF REEL



- NOTES:
1. THE DIRECTION OF EACH CONNECTOR ON A EMBOSS IS REFERED TO THIS DRAWING.
 2. GENERAL TOLERANCE: ± 0.5 , $\pm 3^\circ$
 3. PACKAGED IN EMBOSS TAPE AND PLASTIC REEL 1000 PCS PRE REEL.



REV.	DESCRIPTION	DATE	REV.	DESCRIPTION	DATE
1			2		
2			3		
3			4		
4			5		
5			6		
6			7		
7			8		
8			9		
9			10		

UNLESS OTHERWISE SPECIFIED TOLERANCE			All connectors		
ANGLES	ANG.	±SP	www.allconnectors.de	info@allconnectors.de	
	0.	±0.3	tel: +49 43 1 200416	fax: +49 43 1 200415	
LINEAR	0.0	±0.25	POSTFeldstraße 10	D-17084 Binz, Germany	
	0.00	±0.20			
SCALE	AS SHOWN	UNIT: mm	DRAWN NAME:		
DRAWN	Willis	2013/12/09	M.2 Connector Key M H:4.2mm		
CHECKED	Angel	2013/12/09	PRODUCT NO.	123A-42MA0-R01	
APPROVED	Ken	2013/12/09	FILE NAME	123A-42MA0-R01_D_1	
REV.	DESCRIPTION	DATE	REV.	DESCRIPTION	DATE
1			2		
3			4		
5			6		
7			8		
9			10		