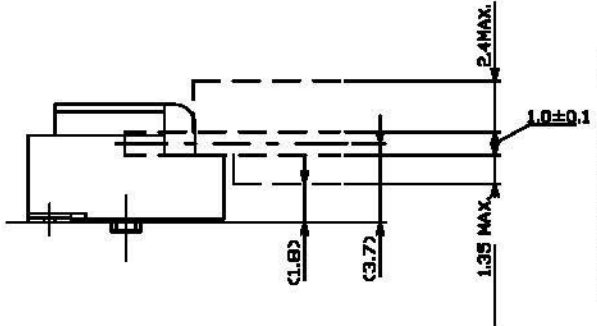
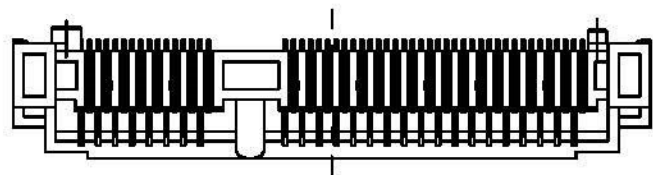


SWITCH CIRCUIT

MATERIAL AND FINISH AS BELOW

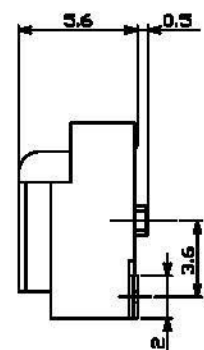
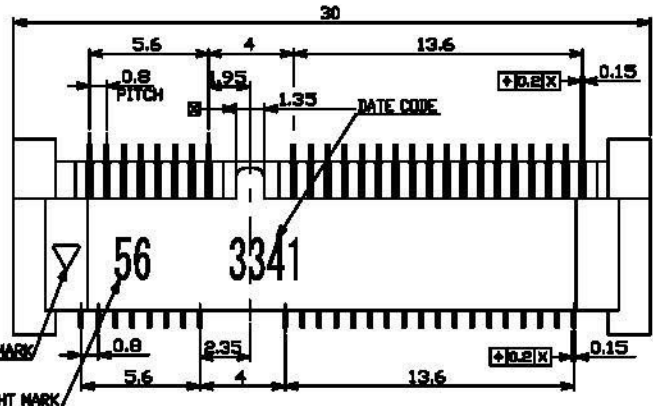
WHEN CARD IS EJECTED	WHEN CARD IS INSERTED
----------------------	-----------------------

A	Housing	LCP UL94V-0, Black	E
B	Contact	Phosphor Bronze C5210, Contact Area:Gold Flash Over Nickel	F
C	Holddown	Brass C2680, Tin Plated	G
D			H

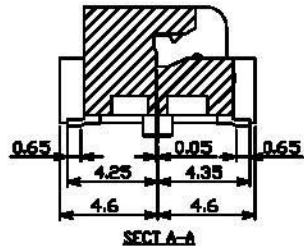
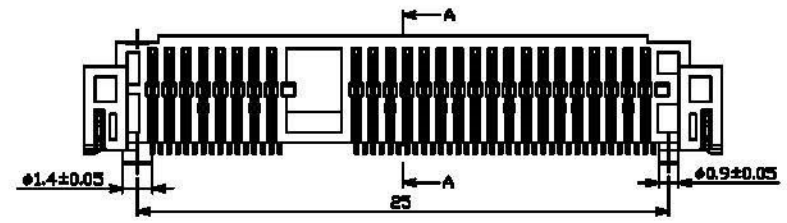


SPECIFICATION:

- 1. ELECTRICAL**
 - 1.1 Current Rating: 0.5A per pin
 - 1.2 Voltage Rating: 50V DC
 - 1.3 Contact Resistance: 55mΩ Max
 - 1.4 Insulation Resistance: 500MΩ Min
 - 1.5 Dielectric Withstanding Voltage: 300VAC
- 2. MECHANICAL**
 - 2.1 Durability: 100 Cycle
 - 2.2 Insertion Force: 2.3Kgf max.
 - 2.3 Extraction Force: 2.3Kgf max.
- 3. ENVIRONMENTAL**
 - 3.1 Operating temperature range: -40°C~+85°C
 - 3.2 Storage temperature range: -40°C~+85°C
- 4. SOLDER ABILITY**
 - 4.1 Recommended IR Reflow Temperature: 260°C 10Sec



DATE CODE: 3341 (YWW)
 Y: 0 YEAR (2010)
 WW: 16 WEEK (01~52)
 D: 3 DAY (01~07)



P1	P2	P3	P4	P5	P6	P7	P8	P9	P10	P11	P12
----	----	----	----	----	----	----	----	----	-----	-----	-----

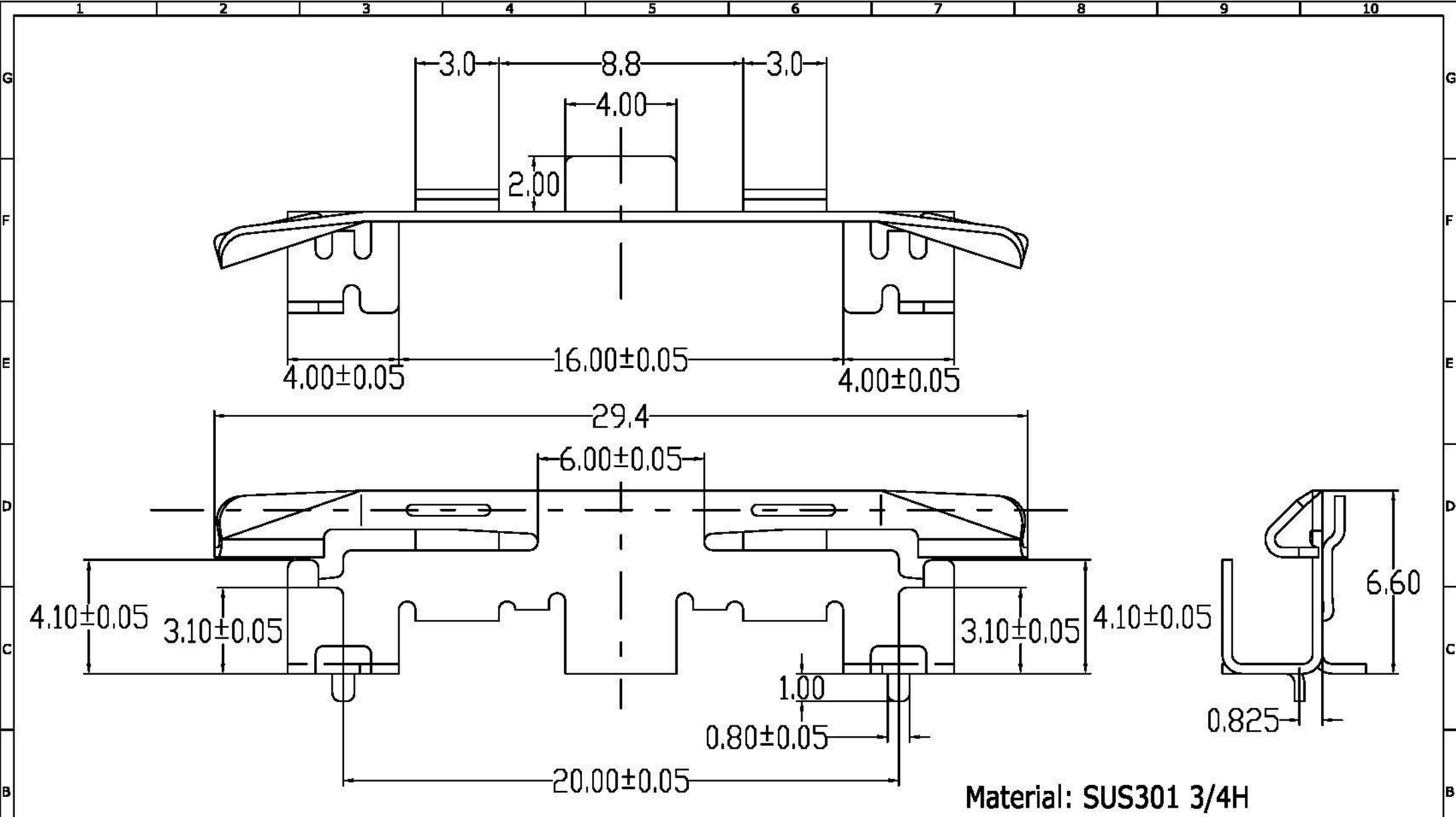
PIN ASSIGNMENT

119A-56A00-R04	Mini PCI Express Socket, Pitch:0.80mm H:5.6mm, Contact Area:Gold Flash
----------------	--

PRODUCT NO.	DESCRIPTION		 www.allconnectors.com info@allconnectors.com Tel: +86 21 20665078 Fax: +86 21 20665099 70704 Fiberscheid - Germany Germany str. 25
UNLESS OTHERWISE SPECIFIED TOLERANCE			
ANGLES	ANG.	+SP	
LINEAR	0.	±0.3	
	0.0	±0.25	
	0.00	±0.20	
SCALE	AS SHOWN	UNIT: mm	
DRAWN	Willis	2014/01/08	DRAWN NAME:
CHECKED	Angel	2014/01/08	Mini PCI Express Socket H:5.6mm
APPROVED	Ken	2014/01/08	PRODUCT NO. 119A-56A00-R04
REV. 1.0	FILE NAME	119A-56A00-R04_B_1	

- △ Revise:
- △ Revise:
- △ Revise:

REV.	DESCRIPTION	DATE	REV.	DESCRIPTION	DATE	SIZE	REV.	FILE NAME
1						A4	1.0	119A-56A00-R04_B_1



Material: SUS301 3/4H

UNLESS OTHERWISE SPECIFIED TOLERANCE		
ANGLES	ANG.	+5P
	0.	±0.3
LINEAR	0.0	±0.25
	0.00	±0.20
SCALE	AS SHOWN	UNIT: mm
DRAWN	Willis	2014/04/23
CHECKED	Angel	2014/04/23
APPROVED	Ken	2014/04/23

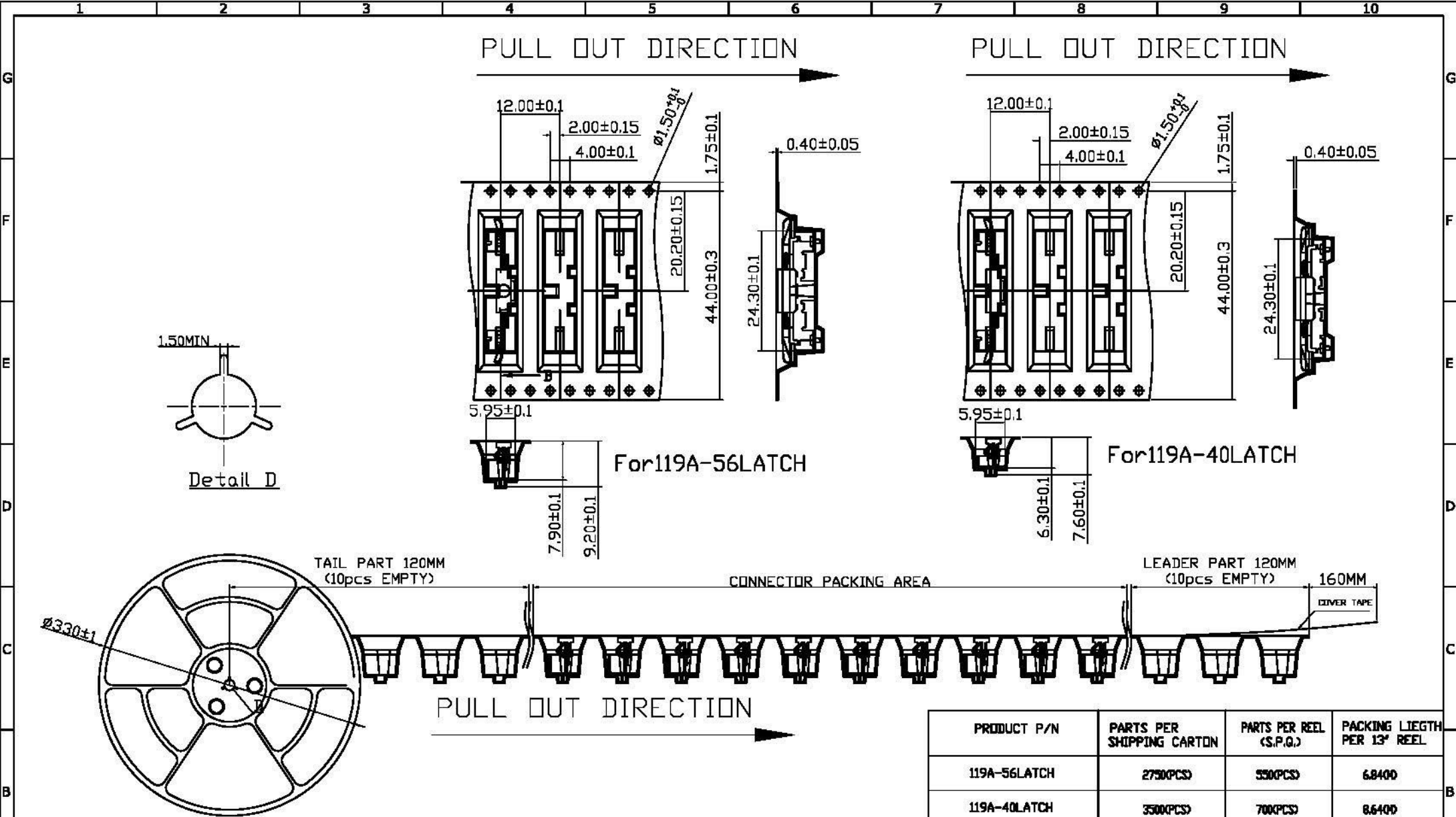
All Connectors
 www.allconnectors.de info@allconnectors.de
 Tel.: 049 711 703918 Fax: 049 711 706904
 70784 Rillriedstr. Germany Krefeld north, DE

DRAWN NAME: Mini PCI Express Latch 5.6H

PRODUCT NO. 119A-56LATCH

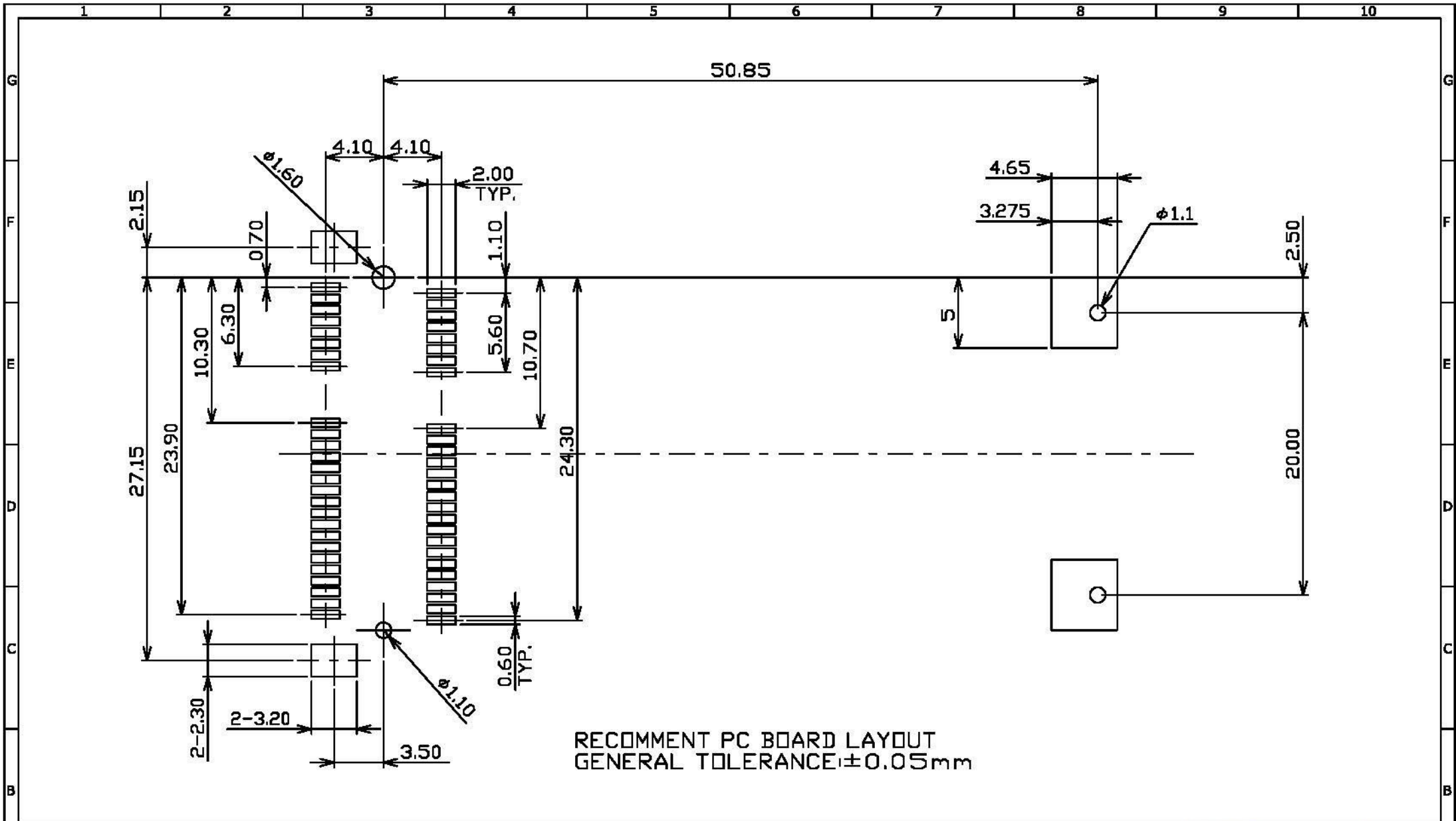
FILE NAME 119A-56LATCH_B_1

REV.	DESCRIPTION	DATE	REV.	DESCRIPTION	DATE
1					
2					
3					
4					
5					
6					
7					

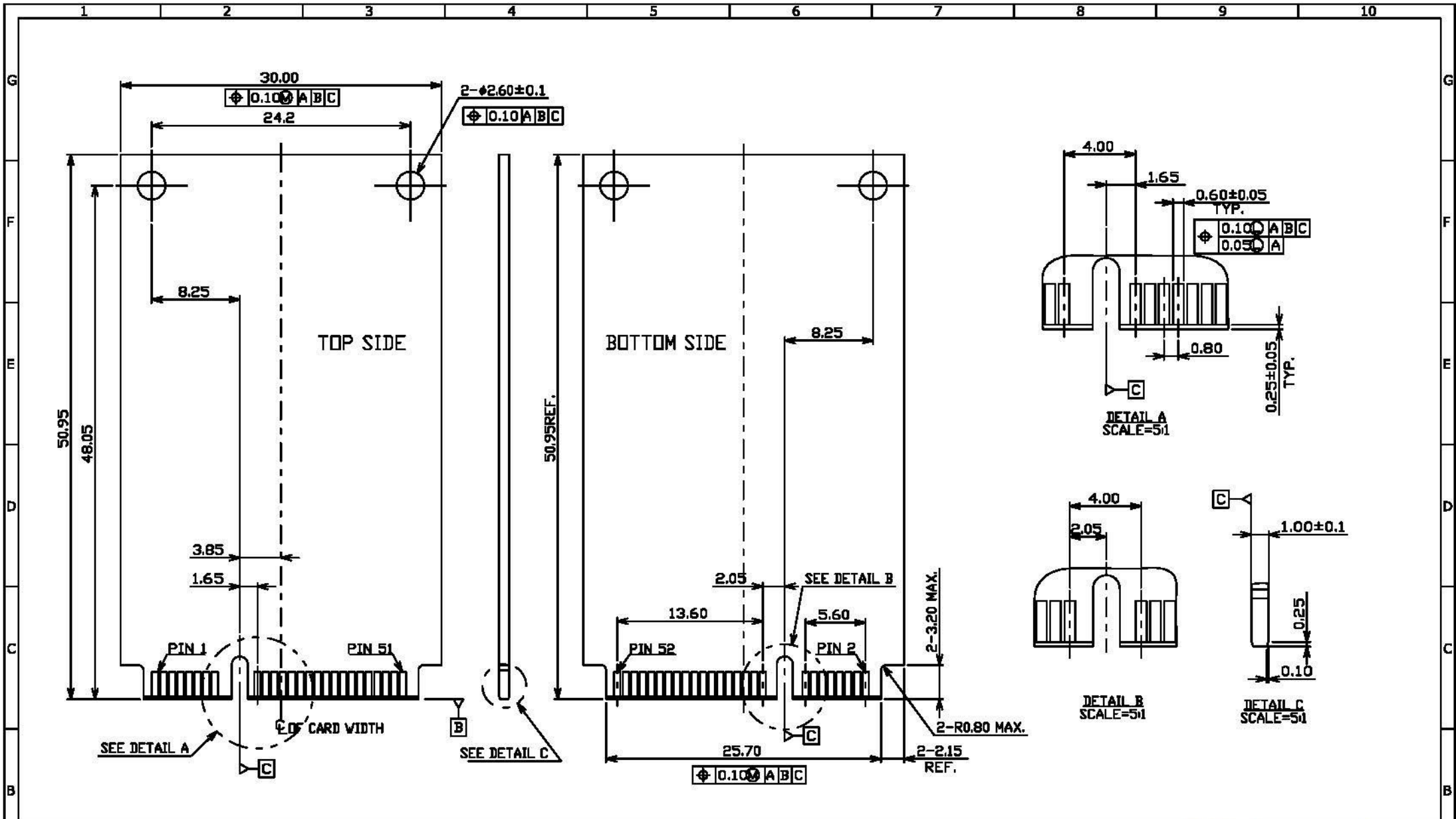


PRODUCT P/N	PARTS PER SHIPPING CARTON	PARTS PER REEL (S.P.Q.)	PACKING LIEGTH PER 13" REEL
119A-56LATCH	2750PCS	550PCS	68400
119A-40LATCH	3500PCS	700PCS	86400

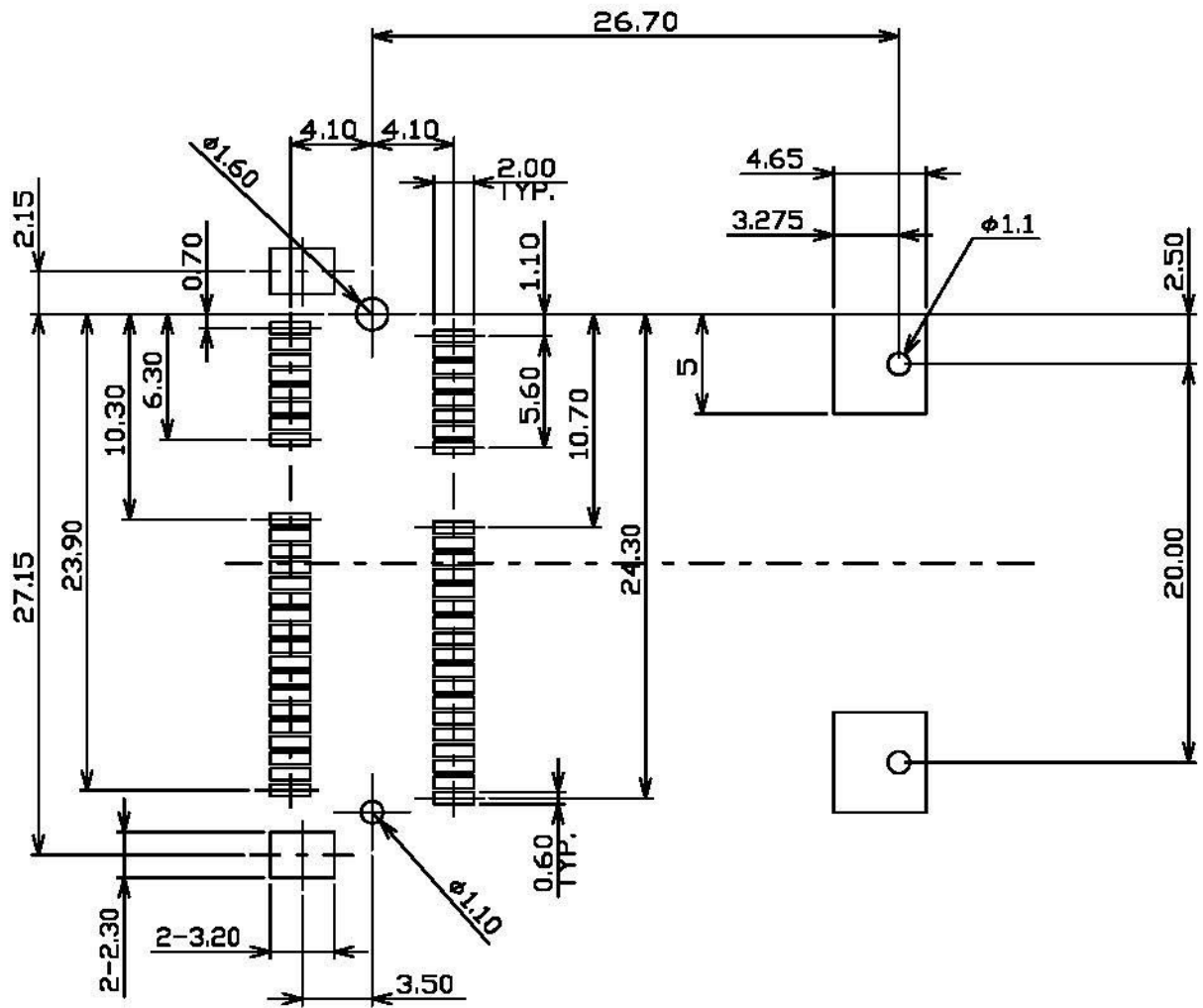
						UNLESS OTHERWISE SPECIFIED TOLERANCE			 <small>www.allconnectors.de info@allconnectors.de</small> <small>Tel.: 0049 711 7005003 Fax: 0049 711 7005001</small> <small>70754 Filkestadt - Germany Kellernerstr. 25</small>	
						ANGLES	ANG.	±5°		
						LINEAR		0.	±0.3	
								0.0	±0.25	
								0.00	±0.20	
						SCALE	AS SHOWN	UNIT: mm	Drawn Name: Mini PCI Express Latch Packing Product No. 119A-XXLATCH File Name 119A-XXLATCH_D_1	
A Revise:						DRAWN	Willis	2014/04/23		
A Revise:						CHECKED	Angel	2014/04/23		
A Revise:						APPROVED	Ken	2014/04/23		
REV.	DESCRIPTION	DATE	REV.	DESCRIPTION	DATE			SIZE A4	REV. 1.0	FILE NAME
1	2	3	4	5	6	7	8	9	10	



REV.	DESCRIPTION	DATE	REV.	DESCRIPTION	DATE	UNLESS OTHERWISE SPECIFIED TOLERANCE			All Connectors				
						ANGLES	ANG.	±5°	www.allconnectors.de Tel: 0049 711 308920 20704 Flörsbald - Germany				
						LINEAR	0.0	±0.25				info: @allconnectors.de Fax: 0049 711 308930 September 2015	
							0.00	±0.20					
						SCALE	AS SHOWN	UNIT: mm	DRAWN NAME: Mini PCI Express Socket H:5.6mm PRODUCT NO.: 119A-56A00-R04 FILE NAME: 119A-56A00-R04_B_1				
A	Revise:					DRAWN	Willis	2014/01/08					
	Revise:					CHECKED	Angel	2014/01/08					
	Revise:					APPROVED	Ken	2014/01/08					
								SIZE	A4	REV.	1.0		



				UNLESS OTHERWISE SPECIFIED TOLERANCE			All Connectors	
				ANGLES	ANG.	+SP	www.allconnectors.de	
					0	±0.3	info@allconnectors.de	
				LINEAR	0.0	±0.25	tel: 0049 (0) 4059603	
					0.00	±0.20	fax: 0049 (0) 4059601	
				SCALE	AS SHOWN	UNIT: mm	70794 Filbertsdorf Germany	
				DRAWN	Willis	2014/01/08	Kollmerstraße 25	
				CHECKED	Angel	2014/01/08	Mini PCI Express Socket H:5.6mm	
				APPROVED	Ken	2014/01/08	PRODUCT NO.	119A-56A00-R04
REV.	DESCRIPTION	DATE	REV.	DESCRIPTION	DATE	SIZE	REV.	FILE NAME
A	Revise:					A4	1.0	119A-56A00-R04_B_1
	Revise:							
	Revise:							



RECOMMEND PC BOARD LAYOUT
GENERAL TOLERANCE: $\pm 0.05\text{mm}$

UNLESS OTHERWISE SPECIFIED TOLERANCE		
ANGLES	ANG.	±5°
LINEAR		±0.3
		±0.25
		±0.20
SCALE	AS SHOWN	UNIT: mm
DRAWN	Willis	2014/01/08
CHECKED	Angel	2014/01/08
APPROVED	Ken	2014/01/08

All Connectors

Universal connectors for
Tel.: 0049 711 4025918
70794 Filzschlucht, Germany
info@allconnectors.de
Fax: 0049 711 4025941
kellermann@ac

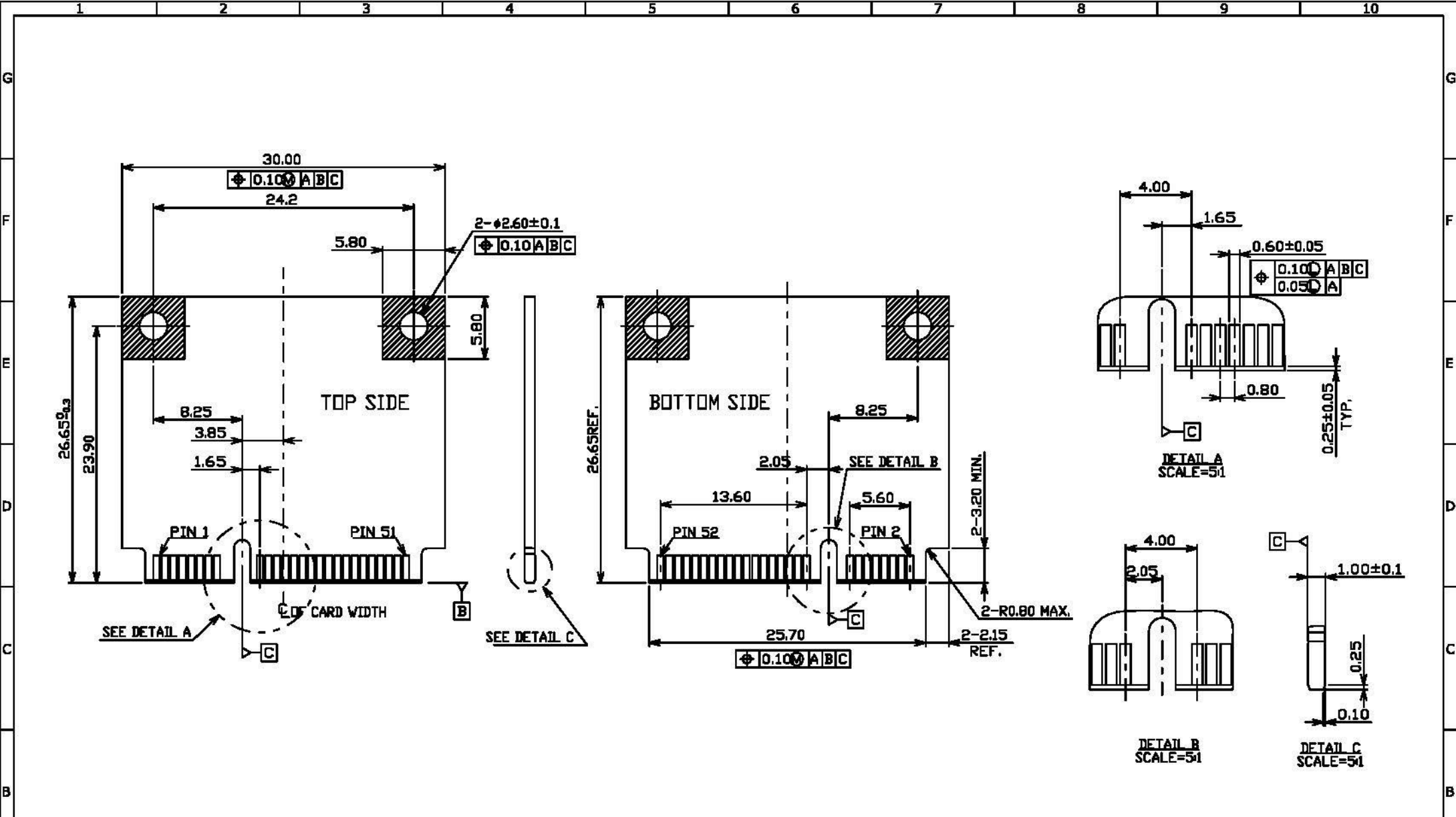
- △ Revise:
- △ Revise:
- △ Revise:

DRAWN NAME:
Mini PCI Express Socket H:5.6mm

PRODUCT NO. 119A-56A00-R04

FILE NAME 119A-56A00-R04_B_1

REV.	DESCRIPTION	DATE	REV.	DESCRIPTION	DATE	SIZE	REV.	FILE NAME
1						A4	1.0	119A-56A00-R04_B_1



REV.	DESCRIPTION	DATE	REV.	DESCRIPTION	DATE	SIZE	REV.	FILE NAME
1						A4	1.0	119A-56A00-R04_B_1

UNLESS OTHERWISE SPECIFIED TOLERANCE			All Connectors	
ANGLES	ANG.	+5P	www.allconnectors.de info@allconnectors.de 30784 Flörsdal, Germany Kollmannstr. 25	
LINEAR	0	± 0.3		
	0.0	± 0.25		
	0.00	± 0.20		
SCALE	AS SHOWN	UNIT: mm		
DRAWN	Willis	2014/01/08	DRAWN NAME:	
CHECKED	Angel	2014/01/08	Mini PCI Express Socket H:5.6mm	
APPROVED	Ken	2014/01/08	PRODUCT NO.	119A-56A00-R04