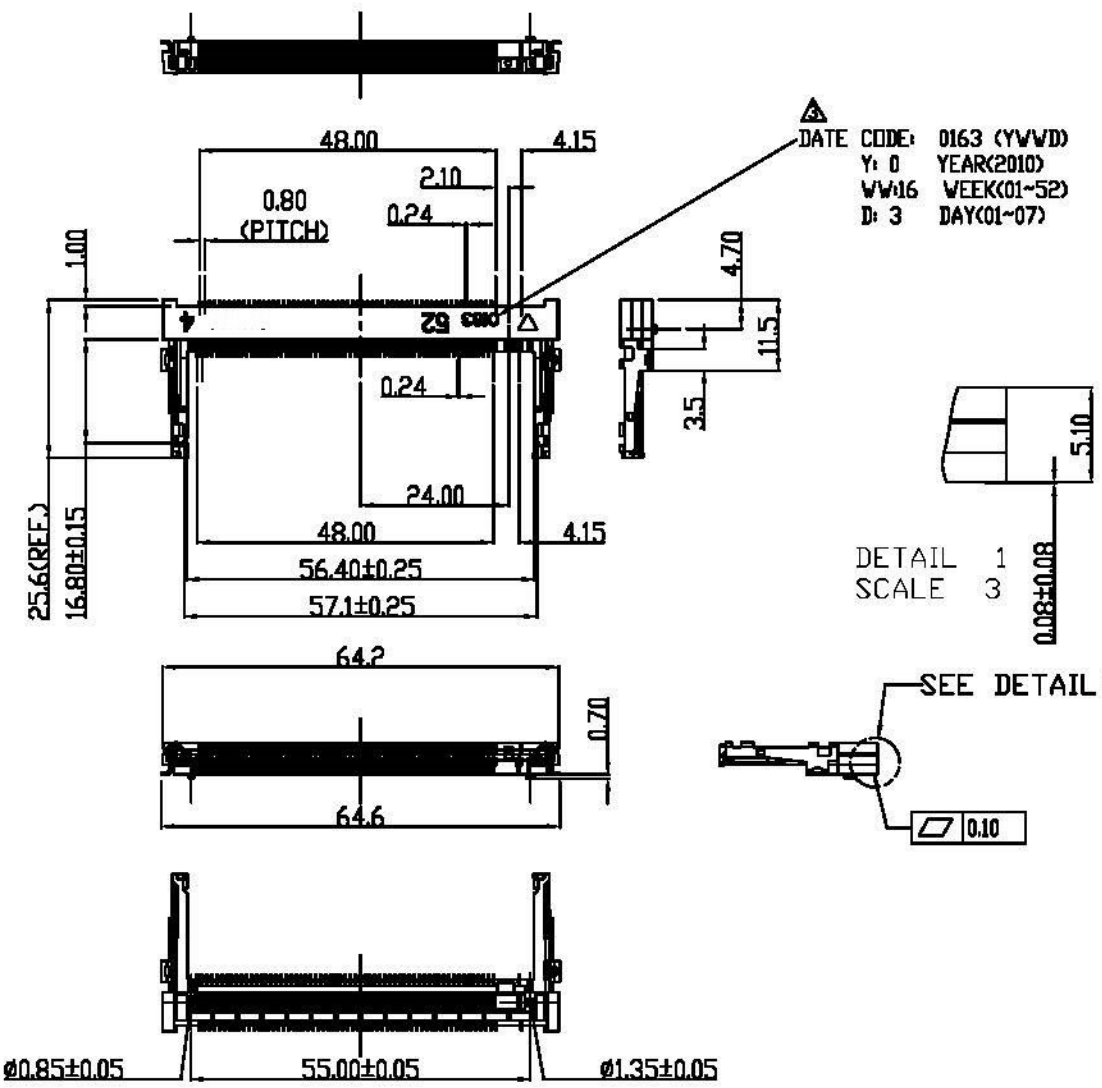
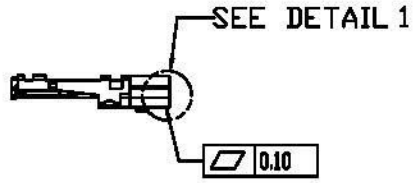


PRODUCT NO.	ITEM	PART NAME	QTY	MATERIAL	PLATING
114B-52B00-R02	1	BODY	1	LCP	
	3	CONTACT	124	PHOSPHOR BRONZE	GOLD 3u"
	4	LATCH	2	STAINLESS	



DATE CODE: 0163 (YWW)
 Y: 0 YEAR(2010)
 WW16 WEEK(01-52)
 D: 3 DAY(01-07)

DETAIL 1
 SCALE 3



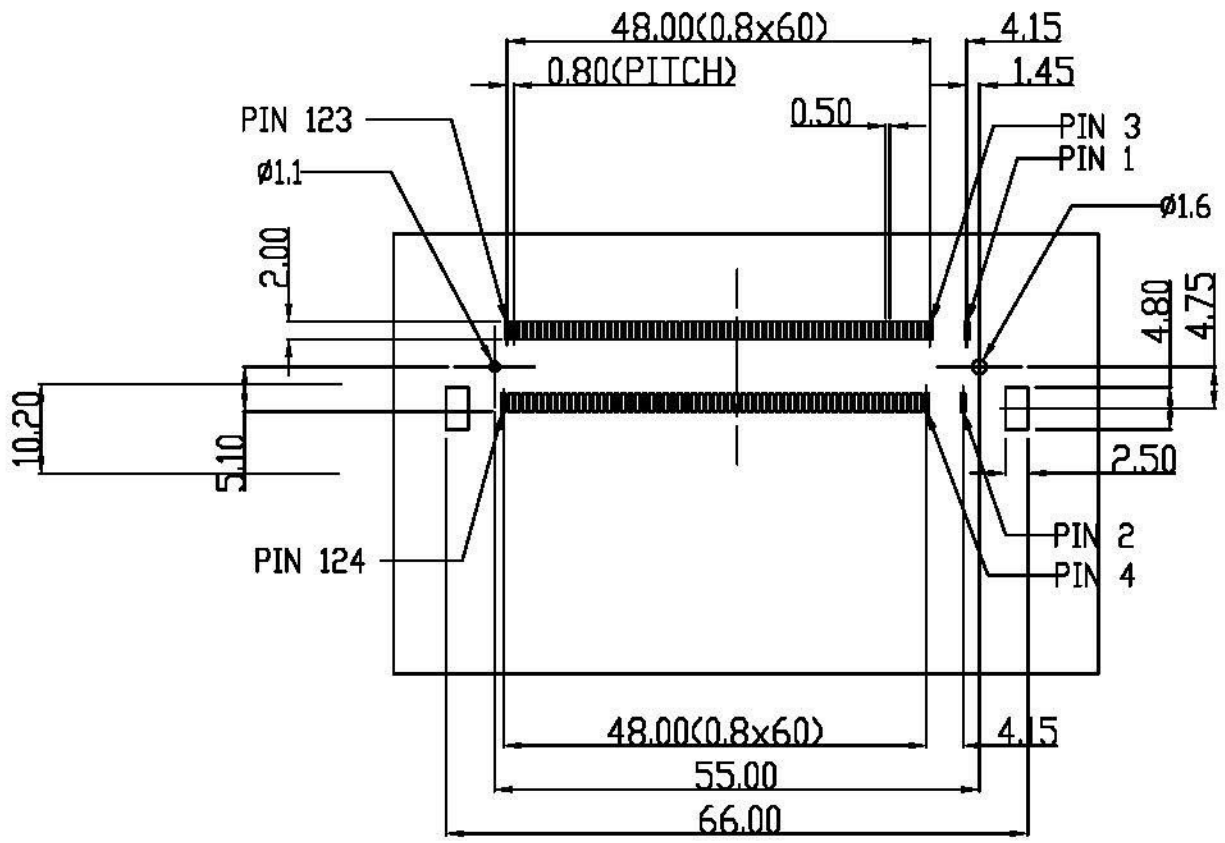
Plastic Body : LCP, Color Black.
 Contact: Phosphor Bronze Alloy (C5191R-H)
 Contact area: Gold 3 micro inches
 Solder area: Matte Tin Plated
 All under-plated Ductile Nickel 50 micro inches (Min.)
 Latch : SUS304R-1/2H, Matte Tin Plated
 Contact Resistance: 30 mΩ (Max)
 Insulation Resistance: 500 MΩ (Max.)
 Dielectric Withstanding Voltage:
 Mate connectors; apply 250V AC at 60 Hz(rms.)
 Contact Normal Force: 50 gf per pin (Min.)
 soldering heat: 260°C
 Rating Voltage: 25V AC
 Rating Current: 0.3A(Max.)/(1PIN)
 Operating Temperature: -40°C to +90°C
 Storage Temperature: -40°C to +90°C

114B-52 B 0 0-R02
 1 2 3 4

- 1. Stand off
s/o: 5.2mm
- 2. Contact Plating
Bi3u' Gold Plating
- 3. Color
0: Black
- 4. RoHS

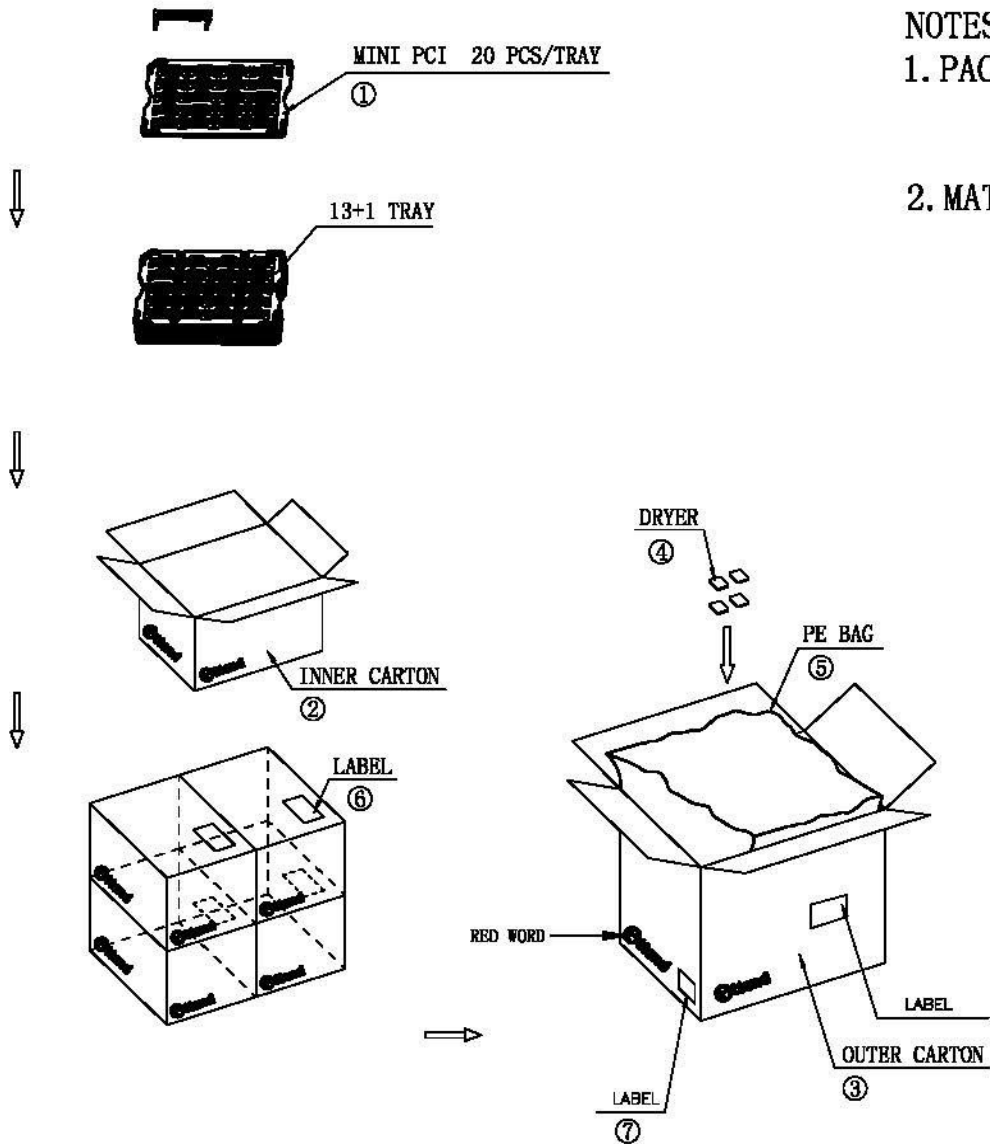
REV.	DESCRIPTION	DATE	REV.	DESCRIPTION	DATE	UNLESS OTHERWISE SPECIFIED TOLERANCE			DRAWN NAME:	PRODUCT NO.	FILE NAME
						ANGLES	ANG.	+SP			
						LINEAR	0.0	±0.3	All Connectors www.allconnectors.de Tel: 0919 711 702508 20794 Fildesheim, Germany info@allconnectors.de Fax: 0919 711 702509 info@allconnectors.de	114B-52B00-R02	114B-52B00-R02_B_5
						SCALE	AS SHOWN	UNIT: mm			
						DRAWN	Willis	2012/08/03	Mini PCI Socket H:5.2, Metal Grounding Type	114B-52B00-R02	114B-52B00-R02_B_5
						CHECKED	Angel	2012/08/03			
						APPROVED	Ken	2012/08/03			
								REV. 1.0			

△	Revise: Date Code	2010/04/30
△	Revise: Latch Matte Tin Plated	2009/09/28
△	Revise: Layout Peg	2009/07/06



RECOMMEND PC BOARD LAYOUT

				UNLESS OTHERWISE SPECIFIED TOLERANCE			All Connectors	
				ANGLES	ANG.	±SP	www.allconnectors.de info@allconnectors.de 70784 Filderstadt, Germany info@allconnectors.de Tel: +49 7141 939-44	
				LINEAR	0	±0.3		
					0.0	±0.25		
				0.00	±0.20			
				SCALE	AS SHOWN	UNIT: mm		
				DRAWN	Willis	2012/08/03	DRAWN NAME:	
				CHECKED	Angel	2012/08/03	Mini PCI Socket H:5.2, Metal Grounding Type	
				APPROVED	Ken	2012/08/03	PRODUCT NO.	114B-52B00-R02
REV.	DESCRIPTION	DATE	REV.	DESCRIPTION	DATE	SIZE	REV.	FILE NAME
1	Revise: Date Code	2010/04/30				A4	1.0	114B-52B00-R02_B_5
2	Revise: Latch Matte Tin Plated	2009/09/28						
3	Revise: Layout Peg	2009/07/06						



NOTES:
 1. PACKING STYLE 20 PCS/TRAY
 260 PCS/INNER CARTON
 1040 PCS/OUTER CARTON
 2. MATERIAL TRAY:PET

7	LABEL	1	PCS	
6	LABEL	4	PCS	
5	PE BAG	1	PCS	
4	DRYER	4	BAG	
3	OUTER CARTON	1	PCS	
2	INNER CARTON	4	PCS	
1	TRAY	20	52+4	PCS
		1040		
NO.	PACKING NAME	PCS/T	T/CTN.	UNIT
		PACKING QTY		NOTE

						UNLESS OTHERWISE SPECIFIED TOLERANCE			 www.allconnectors.de Tel.: 0049 711 702905 20284 Filbertstr. Germany info@allconnectors.de Fax: 0049 711 702904 Kottenheide, 25	
						ANGLES	ANG.	±5°		
						LINEAR		0.	±0.3	
								0.0	±0.25	
								0.00	±0.20	
						SCALE	AS SHOWN	UNIT: mm		
						DRAWN	Willis	2012/08/03	DRAWN NAME:	
						CHECKED	Angel	2012/08/03	Mini PCI Socket H:5.2, Metal Grounding Type	
						APPROVED	Ken	2012/08/03	PRODUCT NO. 114B-52B00-R02	

REV.	DESCRIPTION	DATE	REV.	DESCRIPTION	DATE	SIZE A4	REV. 1.0	FILE NAME 114B-52B00-R02_D_3
1			4					