

DETAIL A

**SPECIFICATION**

**1.MATERIAL**

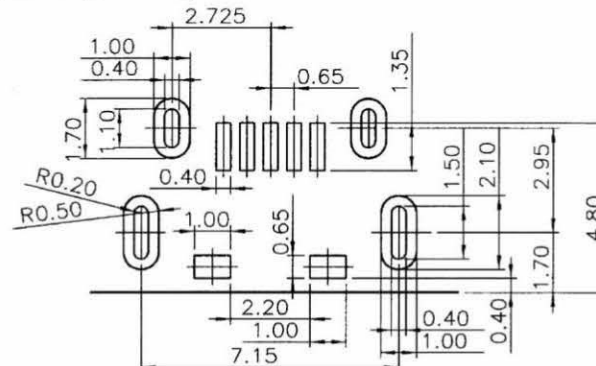
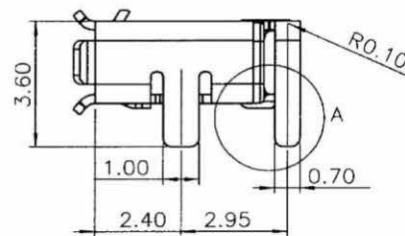
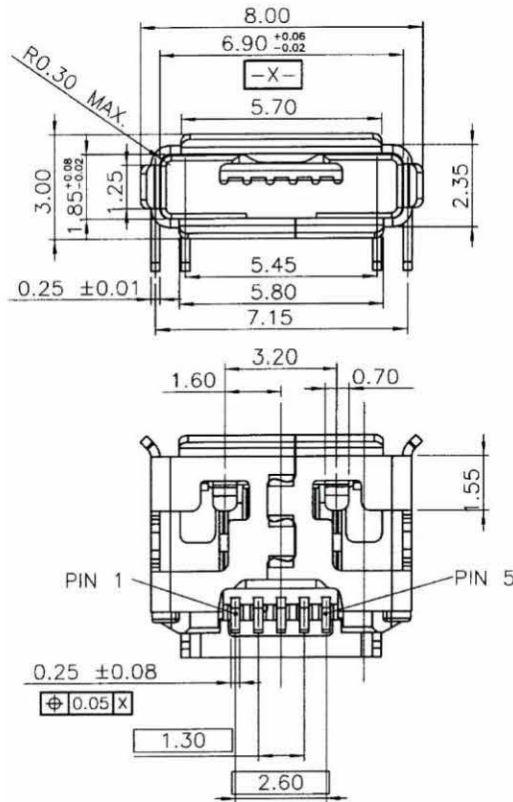
Insulator: Thermal Plastic UL94V-0  
 Contacts: Copper Alloy T=0.2mm  
 CONTACT AREA PLATING:15u"~30u" Selective Gold  
 SOLDER AREA PLATING:1u" Gold  
 Shell: Stainless T=0.25mm Underplate Nickel 20u" Tin 100u"

**2.MECHANICAL:**

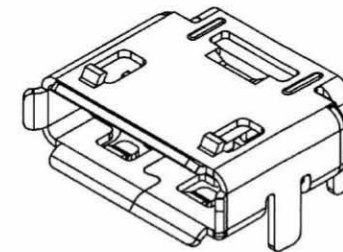
MATING FORCE:35N MAX.  
 UNMATING FORCE:10N MIN. INITIAL  
 8~20N AFTER 10000 CYCLES  
 DURABILITY:10000 CYCLES

**3.ELECTRICAL**

Operation voltage: 30V MAX.  
 Current rating: 1.0 Amps max.  
 Contact resistance: 30 mohms MAX. initial  
 40 mohms MAX. AFTER 10000 CYCLES  
 Insulation resistance: 100 Mohms min @ 500 VDC  
 Dielectric withstanding voltage: 100 VAC / minute  
 Temperature range: -30°C TO +85°C



RECOMMENDED PCB LAYOUT  
 TOLERANCE: ±0.05mm  
 PCB THICKNESS: 0.8mm  
 TOP VIEW



**RoHS Compliant**

**All Connectors**

www.allconnectors.de  
 Tel.: 0049 711 7002503  
 70724 Tübingen - Germany

Info@allconnectors.de  
 Fax: 0049 711 7002504  
 Kettnerstr. 25

DRAWING BY CY

CHECKED BY GENIUS

UNIT / mm SCALE 1 : 1

DATE

SIZE A4 PROJECTION

TOLERANCES ARE

X ±  
 X ±  
 .XX ±  
 .XXX ±  
 ANG ±



**ORDER INFORMATION**

MISB-SWMM-5AB-LF  
 SERIES | LEADFREE  
 5 PIN AB TYPE  
 METAL FOOT  
 90°SMT  
 FEMALE

DESCRIPTION: