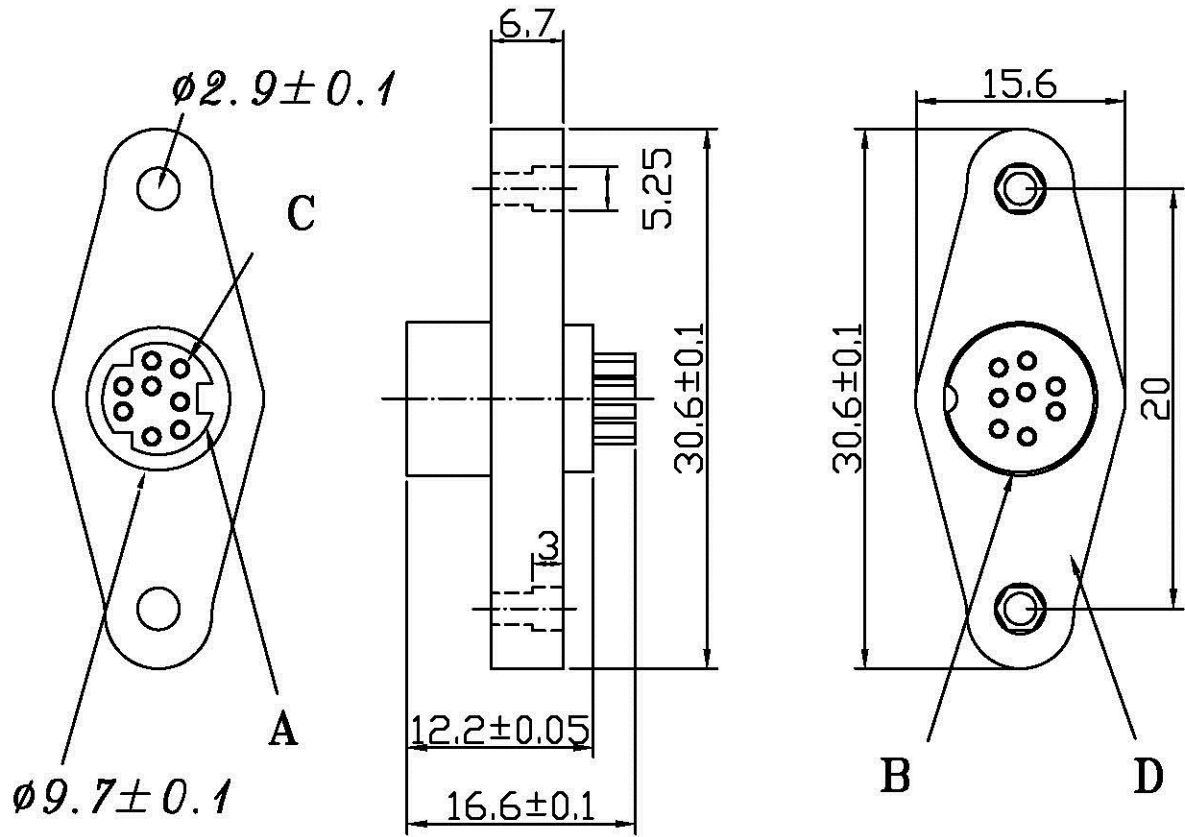


MATERIALS:

- A).HOUSING NYLON 66 + FIBLER
- B).METAL SHELL BRASS NICKEL PLATED
- C).PIN PHOSPHOR BRANZE SILVER PLATED
- D).BODY ABS

SPECIFICATIONS:

- 1.RATION: 100V AC 1A MAX or 12V DC 2A MAX.
- 2. INSULATION RESISTANCE: 50M OHM MIN at 250V DC.
- 3. DIELECTRIC STRENGTH: 250 V AC / 1 MINUTE.
- 4. CONTACT RESISTANCE: 30M OHM MAX.
- 5. INSERTION FORCE: 4.5KG MAX.
- 6. WITHDRAWAL FORCE: 0.9KG ~ 3KG.



Allconnectors

www.allconnectors.de
 info@allconnectors.de
 20244 Eiderstedt - Germany

PART NO. MDS-SPP-xx		APPROVED BY CY		TOLERANCES ARE		DESCRIP TION: MINI DIN SOCKET PANEL MOUNT PLASTIC	
DWG NO. MDS-SPP-xx		DRAWING BY		.X ± 0.05 .XX .XXX AWG		AREA	
FILE NO.		PROJECTION		REVISIONS		HK	
UNIT / mm	SCALE 1:1			DATE			