

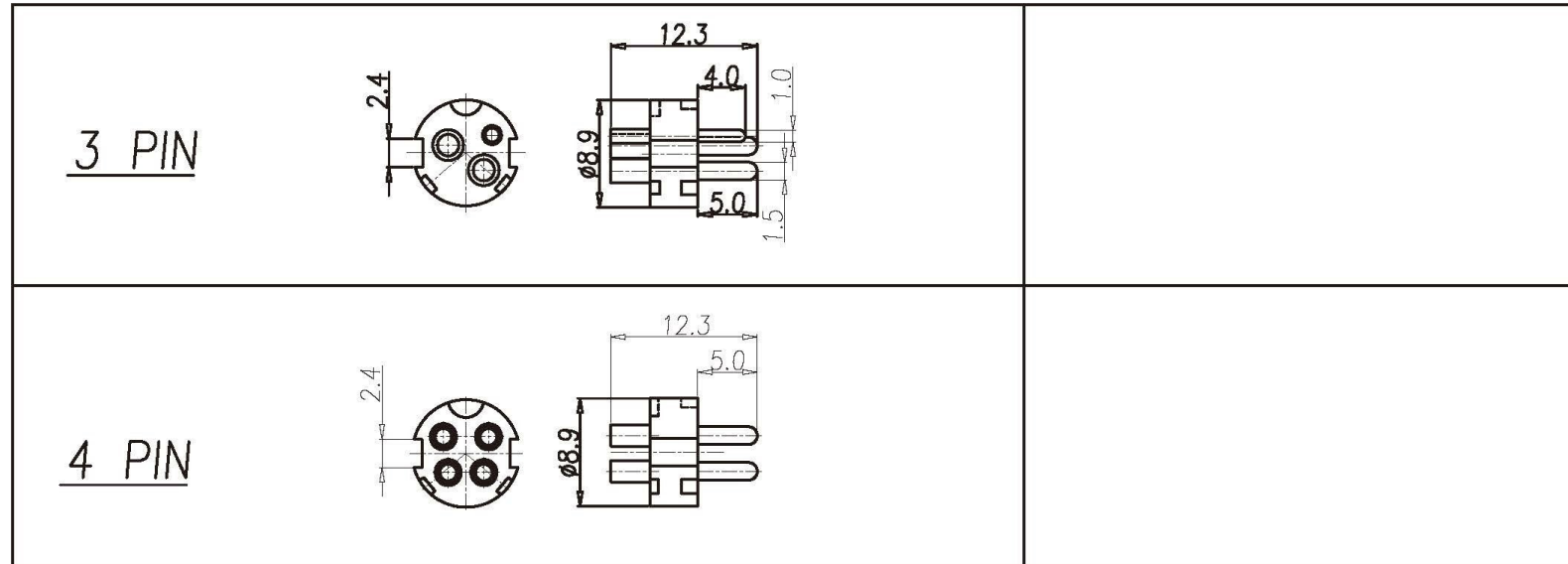
1. MATERIAL :
  - 1-1. HOUSING : PBT UL94V-0 ; COLOR : BLACK.
  - 1-2. CONTACT : BRASS.
  - 1-3. PLASTIC COVER : ABS ; COLOR : SEE TABLE A
  - 1-4. PLASIC TUBE : ABS OR PC ; COLOR : SEE TABLE A
  - 1-5. POM RING : POM ; COLOR : BLACK.
  - 1-6. SR : PVC ; COLOR : SEE TABLE A.
  - 1-7. SPRING : CARBPN STEEL OR STAINLESS STEEL
  - 1-8. METAL CAP : BRASS
  - 1-9. MATEL SHELL: BRASS
2. FINISH :
  - 2-1. CONTACT : 50 MICRO INCHES MIN. SILVER PLATED
  - 2-4. SPRING : NICKEL PLATED 60u" ~ 100u" OVER ALL.
  - 2-4. METAL CAP : NICKEL PLATED 60u" ~ 100u" OVER ALL.
  - 2-4. MATEL SHELL : NICKEL PLATED 60u" ~ 100u" OVER ALL.
3. ELETRICAL SPECICATION :
  - 3-1. RATED CURRENT : 4PIN: 7.5A/DC MAX  
3PIN: PIN1 &PIN2 7.5A/DC ; PIN3 1A/DC
  - 3-2. VOLTAGE : 20V/DC MAX
4. ENVIRONMENTAL :
  - 4-1. OPERATION TEMPERATURE : -20 °C~85°C.

		<b>RoHS Compliant</b>		TOLERANCES ARE	
		DRAWING BY CY		X ±	
CHECKED BY GENIUS				.X ± 0.25	
UNIT/ mm		SCALE 1:1		.XX ± 0.15	
DATE				.XXX ± 0.10	
SIZE A4		PROJECTION		ANG ± 1°	
www.allconnectors.de		info@allconnectors.de			
Tel.: 0049 /11 /009503		Fax: 0049 /11 /009504			
W/P4 Lilderstadt - Germany		Kettenerstr. 25			



<b>ORDER INFORMATION</b>			
MDP-PA-xx-LF			
SERIES	ASSEMBLY	03~04WAY	LEADFREE
MALE			
DESCRIPTION: PowerDin 圖式			

# TYPE 1



## HOUSING & CONTACT ASSEMBLY.

**All Connectors**

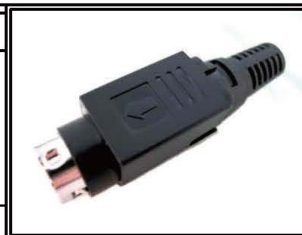
www.allconnectors.de info@allconnectors.de  
 Tel.: 0049 711 7009503 Fax: 0049 711 7009504  
 70794 Filderstadt - Germany Kettenerstr. 25

**RoHS Compliant**

DRAWING BY CY  
 CHECKED BY GENIUS  
 UNIT / mm SCALE 1 : 1  
 DATE  
 SIZE A4 PPROJECTION

TOLERANCES ARE

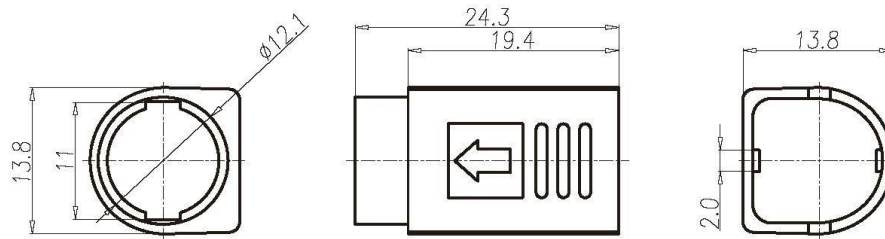
X ±  
 .X ± 0.25  
 .XX ± 0.15  
 .XXX ± 0.10  
 ANG ±



ORDER INFORMATION

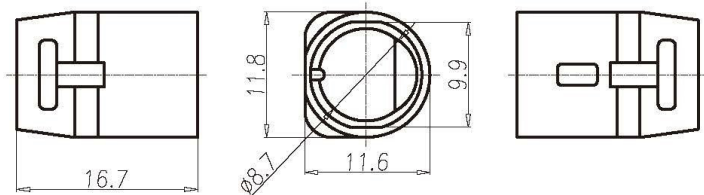
MDP-PA-xx-LF  
 SERIES | 03~04WAY | LEADFREE  
 ASSEMBLY  
 MALE

DESCRIPTION:

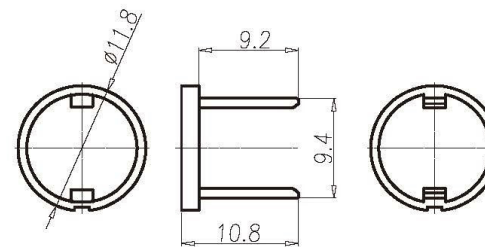


TYPE 1:單箭頭

PLASTIC COVER



PLASTIC TUBE



POM RING

**Allconnectors**

www.allconnectors.de  
Tel.: 0049 711 7009503  
70794 Filderstadt - Germany

info@allconnectors.de  
Fax: 0049 711 7009504  
Kettnerstr. 25

**RoHS Compliant**

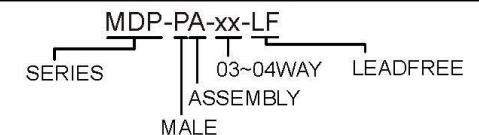
DRAWING BY CY	
CHECKED BY GENIUS	
UNIT / mm	SCALE 1 : 1
DATE	
SIZE A4	PJECTION

TOLERANCES ARE

X ±  
.X ± 0.25  
.XX ± 0.15  
.XXX ± 0.10  
ANG ±

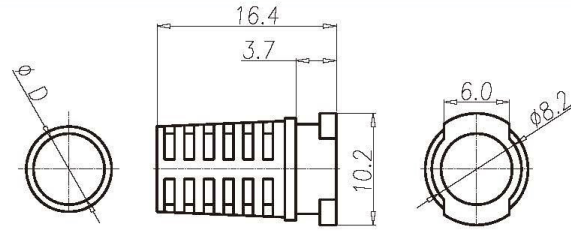


ORDER INFORMATION

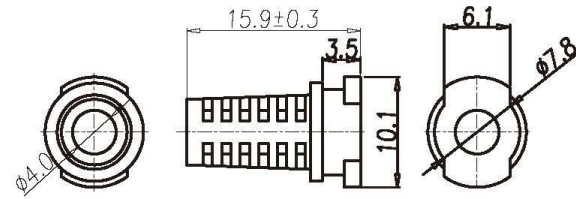


DESCRIPTION:

SR

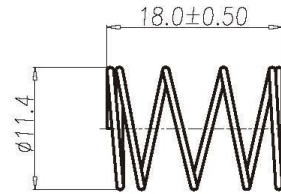


TYPE 1:  
OD :SEE TABLE A

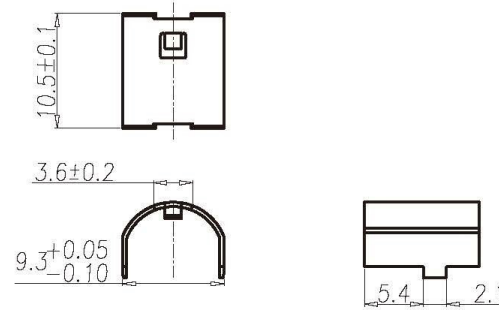


TYPE 2:OD:Ø4.0

SPRING



MATEL CAP



**All Connectors**

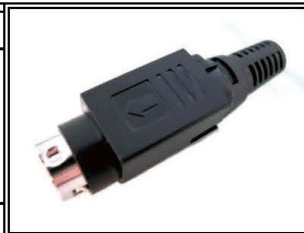
www.allconnectors.de info@allconnectors.de  
Tel.: 0049 711 7009503 Fax: 0049 711 7009504  
70794 Filderstadt - Germany Kettenerstr. 25

**RoHS Compliant**

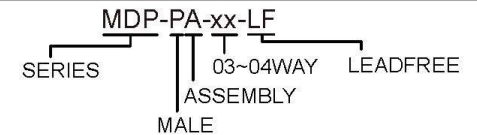
DRAWING BY CY	
CHECKED BY GENIUS	
UNIT / mm	SCALE 1 : 1
DATE	
SIZE A4	PJECTION

TOLERANCES ARE

X ±  
.X ± 0.25  
.XX ± 0.15  
.XXX ± 0.10  
ANG ±

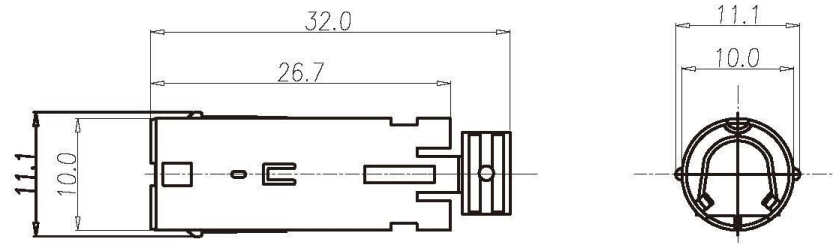


**ORDER INFORMATION**

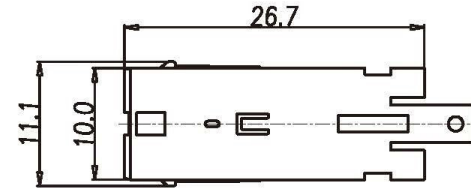
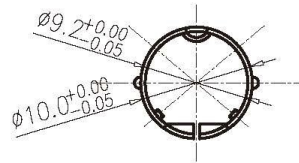


DESCRIPTION:

TYPE 1:一件式(銅管+線扣)

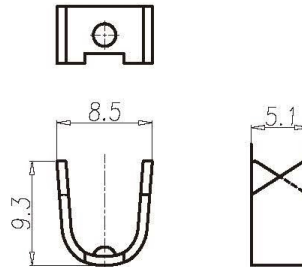


銅管



TYPE 2:二件式

線扣



MATEL SHELL

**Allconnectors**

www.allconnectors.de info@allconnectors.de  
Tel.: 0049 711 7009503 Fax: 0049 711 7009504  
70794 Filderstadt - Germany Kettenerstr. 25

**RoHS Compliant**

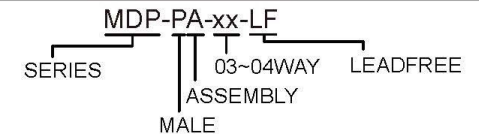
DRAWING BY CY	
CHECKED BY GENIUS	
UNIT/ mm	SCALE 1:1
DATE	
SIZE A4	PJECTION

TOLERANCES ARE

X ±  
.X ± 0.25  
.XX ± 0.15  
.XXX ± 0.10  
ANG ±



ORDER INFORMATION



DESCRIPTION: