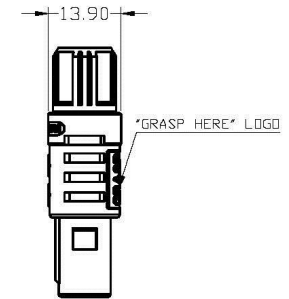
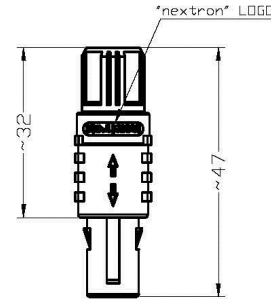


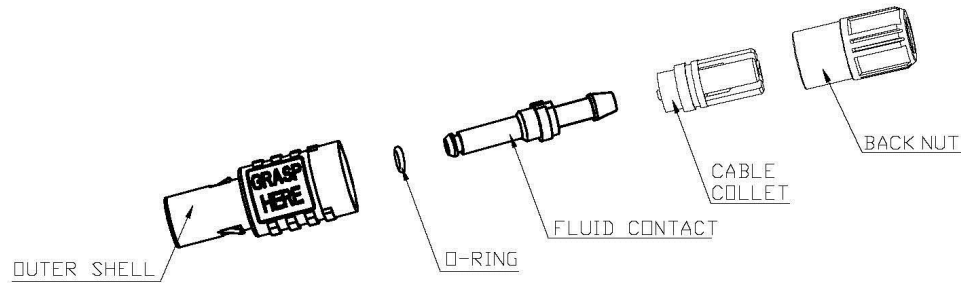
SNAP LATCH ASSEMBLY P/N DESCRIPTION:

		R	M	A1	G	X	0	0	0	3	X	0	1	X
1	ROHS													
2	MEDICAL													
3	STYLE	A1=PAK Straight Plug with cable collet -----WITH FLUID CONTACT												
4	OUTER SHELL MATERIAL	G=GREY PSU												
5	BACK NUT COLOR	0=BLACK	1=WHITE	2=RED	4=YELLOW	5=GREEN	6=BLUE	8=GREY						
6	INNER FLUID CONTACT DIAMETER	0=2.6mm												
7	CONTACT PLATING	0=NI PLATED												
8	CABLE COLLET	3=Ø6.5mm												
9	CODING	0=0°	A=40°	C=60°	E=80°	H=170°	J=205°							
10	LOGO	0='nextron' LOGO AND 'GRASP HERE' LOGO G=NO 'nextron' LOGO, WITH 'GRASP HERE' LOGO												



NOTES :

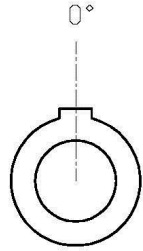
- MATERIAL
OUTER SHELL : HIGH TEMPERATURE PLASTIC,UL94V-0
FLUID CONTACT : COPPER ALLOY,NICKEL PLATED
O-RING : FPM
CABLE COLLET : HIGH TEMPERATURE PLASTIC,UL94V-0
BACK NUT : HIGH TEMPERATURE PLASTIC,UL94V-0
- ALL DIMENSIONS ARE IN MILLIMETERS
- RoHS DIRECTIVE COMPLIANCE
- CHARACTERISTICS
5-1.MAX WORKING PRESSURE : 2 bars
5-2.WORKING TEMPERATURE : -20~150°C
5-3.TUBE DIAMETER INNER/OUTER : 4mm/6mm



UNITS ■mm □INCH		NAME:plastic SnapLatch Straight Plug with fluid contact,with cable collet		All connectors www.allconnectors.de 1830009 031 402048 41264 Hilderstraße • Germany +49 4103 402048 FAX 04103 412048 KETTENWEG 22	
GENERAL TOLERANCES: (UNLESS SPECIFIED)		PART NO: RMA1GX0003X01X		TITLE: CUSTOMER DWG.	
	mm	INCH	APPD: Seawen 10/18/13		DWG NO: 010-0000-C04
4 PLACE	± **	± **	CHKD: Peter 10/18/13		C
3 PLACE	± **	± **	DRAWN: Tommy 10/18/13		
2 PLACE	± 0.20	± **			
1 PLACE	± 0.50	± **			
ANGULAR:	X°± **	X°± **			

X1	NEW RELEASE	10/18/13	Seawen
REV.	DESCRIPTION	DATE	APPD

CODING (PLUG FRONT VIEW):



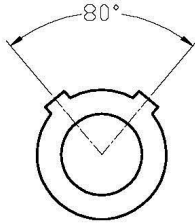
0



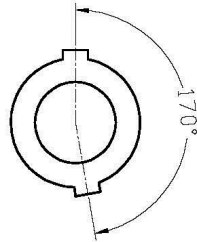
A



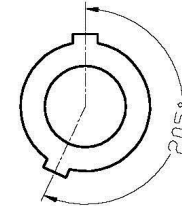
C




E



H



J

UNITS <input checked="" type="checkbox"/> mm <input type="checkbox"/> INCH		NAME: plastic SnapLatch Straight Plug with fluid contact, with cable collet		 <small>www.allconnectors.de info@allconnectors.de Tel.: 0345 311 3805/31 Fax: 0345 311 3995/66 70791 Eilenstedt - Germany net@allconnectors.de</small>	
GENERAL TOLERANCES: (UNLESS SPECIFIED)		PART NO: RMA1GX0003X01X		TITLE: CUSTOMER DWG.	
	mm	INCH	APPD: Seawen 10/18/13		DWG NO: 010-0000-C04
4 PLACE	± .**	± .**	CHKD: Peter 10/18/13		C
3 PLACE	± .**	± .**	DRAWN: Tommy 10/18/13		
2 PLACE	± 0.20	± .**			
1 PLACE	± 0.50	± .**			
ANGULAR:	X° ± .**	X° ± .**			

X1	NEW RELEASE	10/18/13	Seawen
REV.	DESCRIPTION	DATE	APPD