

LOGO

NOTES :

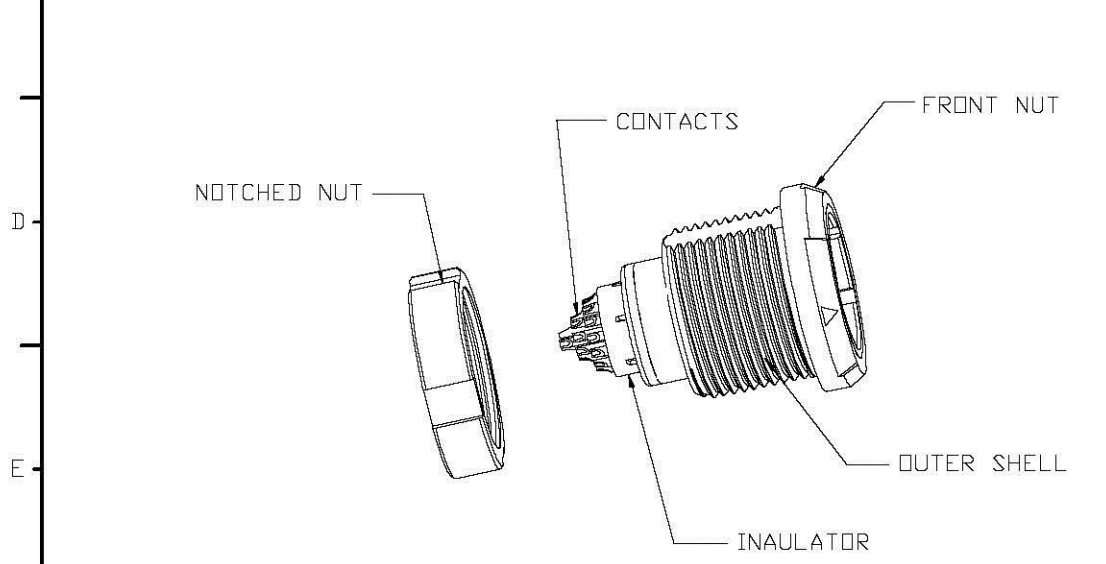
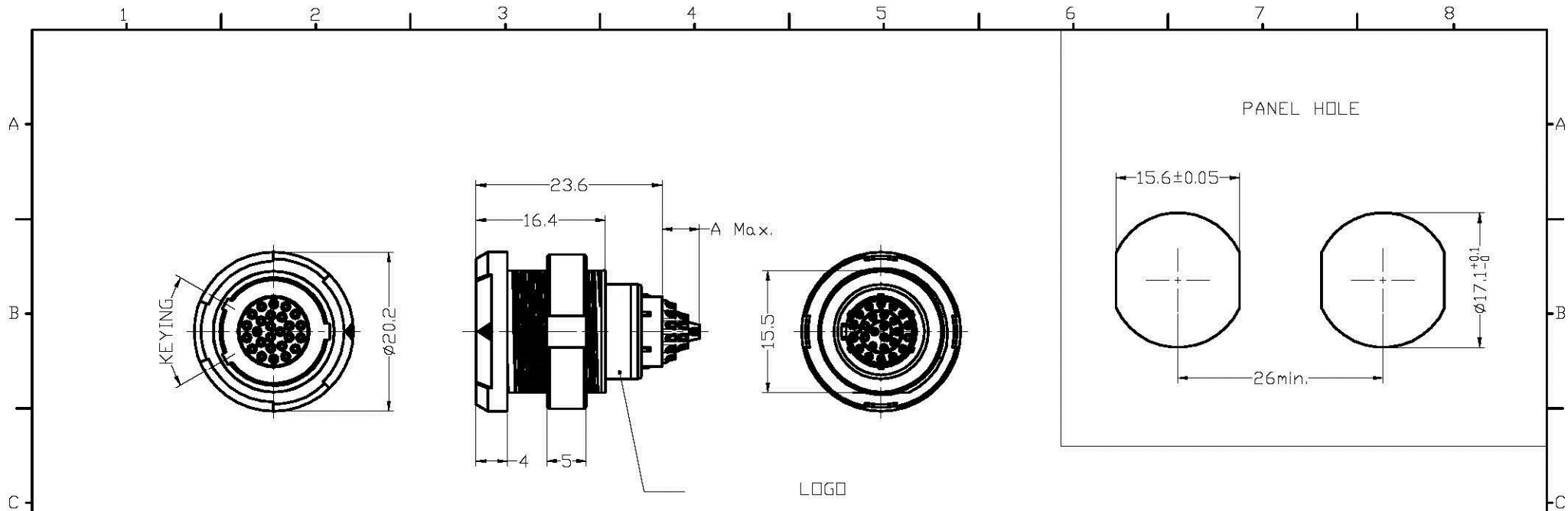
- 1.MATERIAL
 OUTER SHELL : PSU/PEI
 INSULATOR : PEEK
 CONTACT : COPPER ALLOY
 NUT : PSU/PEI
- 2.PLATING : Au ALL OVER Ni
- 3.ALL DIMENSIONS ARE IN MILLIMETERS
- 4.INGRESS PROTECTION : IP50
- 5.ENDURANCE : 1000CYCLES
- 6.WORKING TEMPERATURE : -50~150°C
- 7.AVERAGE RETENTION FORCE FOR STRAIGHT PLUG
 PULL ON THE BACK NUT : 100N MIN.
- 8.TORQUE : 0.8Nm MAX.
- 9.RoHS DIRECTIVE COMPLIANCE

UNITS	
<input checked="" type="checkbox"/> mm	<input type="checkbox"/> INCH
GENERAL TOLERANCES: (UNLESS SPECIFIED)	
	mm INCH
4 PLACE	± **. ** ±. **. **
3 PLACE	± **. ** ±. **. **
2 PLACE	± 0.30 ±. **. **
1 PLACE	± 0.50 ±. **. **
ANGULAR:	X° ± 5° X° ± **. **

NAME: FIXED SOCKET WITH TWO NUTS
PART NO: R-MF1XXPLX0XXXX
APPD: Seawen06/10/14
CHKD: Annie06/10/14
DRAWN: Tommy06/10/14

TITLE: CUSTOMER DWG.	
DWG NO: 010-0000-C44	C
SCALE: 2/1	SHEET: 1/5
REV: X1	

X1	NEW RELEASE	06/10/14	Seawen
REV.	DESCRIPTION	DATE	APPD

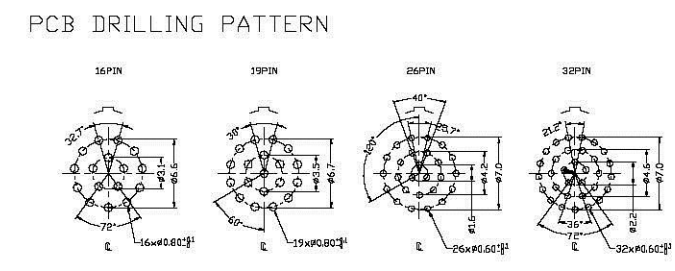
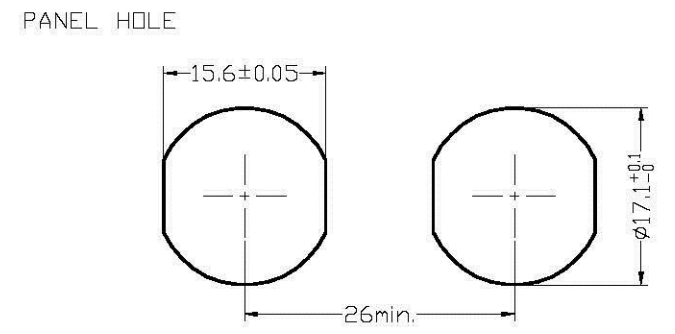
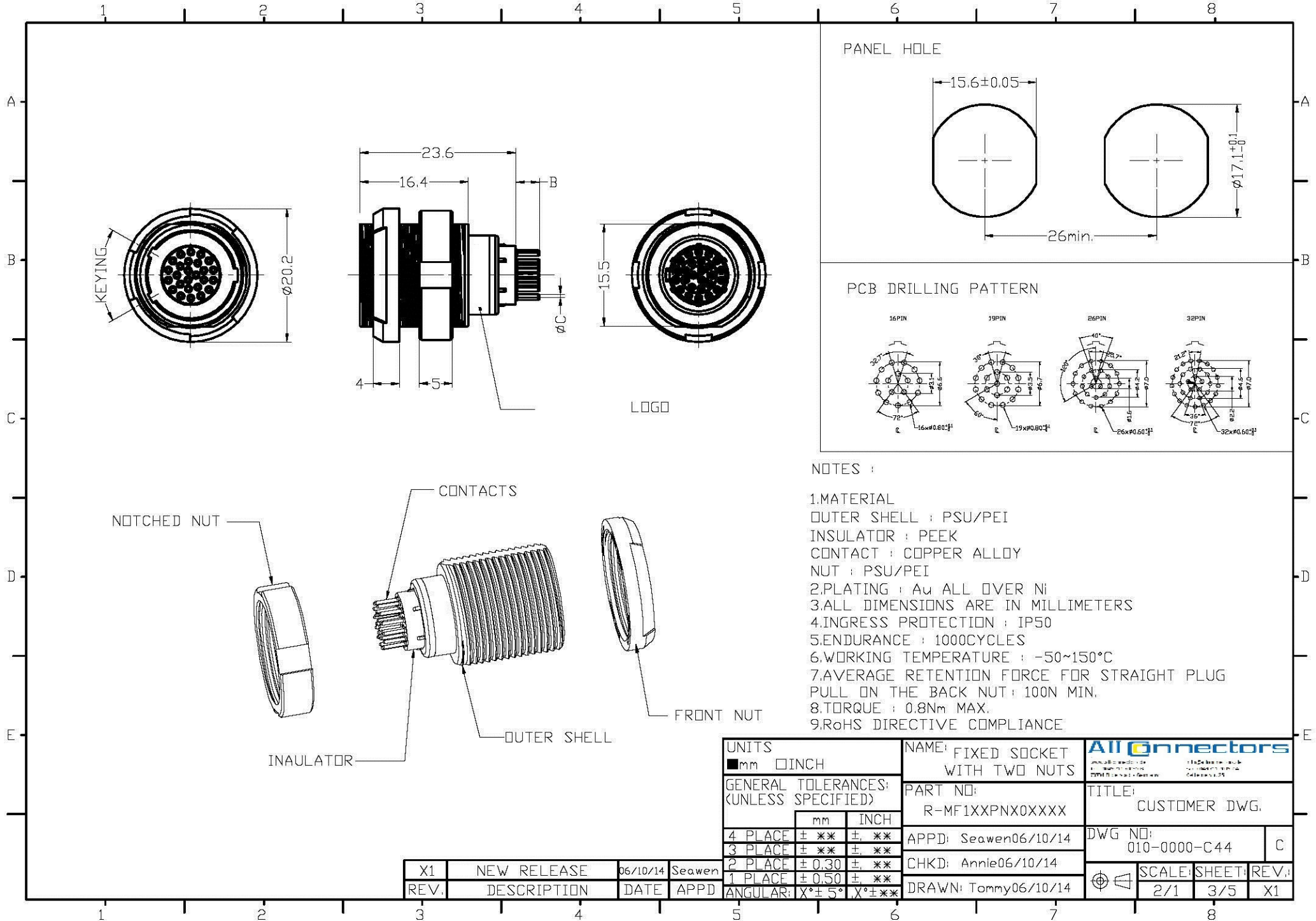


NOTES :

- 1.MATERIAL
 OUTER SHELL : PSU/PEI
 INSULATOR : PEEK
 CONTACT : COPPER ALLOY
 NUT : PSU/PEI
- 2.PLATING : Au ALL OVER Ni
- 3.ALL DIMENSIONS ARE IN MILLIMETERS
- 4.INGRESS PROTECTION : IP50
- 5.ENDURANCE : 1000CYCLES
- 6.WORKING TEMPERATURE : -50~150°C
- 7.AVERAGE RETENTION FORCE FOR STRAIGHT PLUG PULL ON THE BACK NUT : 100N MIN.
- 8.TORQUE : 0.8Nm MAX.
- 9.RoHS DIRECTIVE COMPLIANCE

UNITS <input checked="" type="checkbox"/> mm <input type="checkbox"/> INCH		NAME: FIXED SOCKET NUT FIXING			
GENERAL TOLERANCES: (UNLESS SPECIFIED)		PART NO: R-MF4XXPLX0XXXX		TITLE: CUSTOMER DWG.	
	mm	INCH	APPD: Seawen06/10/14		DWG NO: 010-0000-C44
4 PLACE	± **	± **	CHKD: Annie06/10/14		C
3 PLACE	± **	± **	DRAWN: Tommy06/10/14		
2 PLACE	± 0.30	± **	SCALE: 2/1		SHEET: 2/5
1 PLACE	± 0.50	± **	REV.:		X1
ANGULAR:	X°± 5°	X°± **			

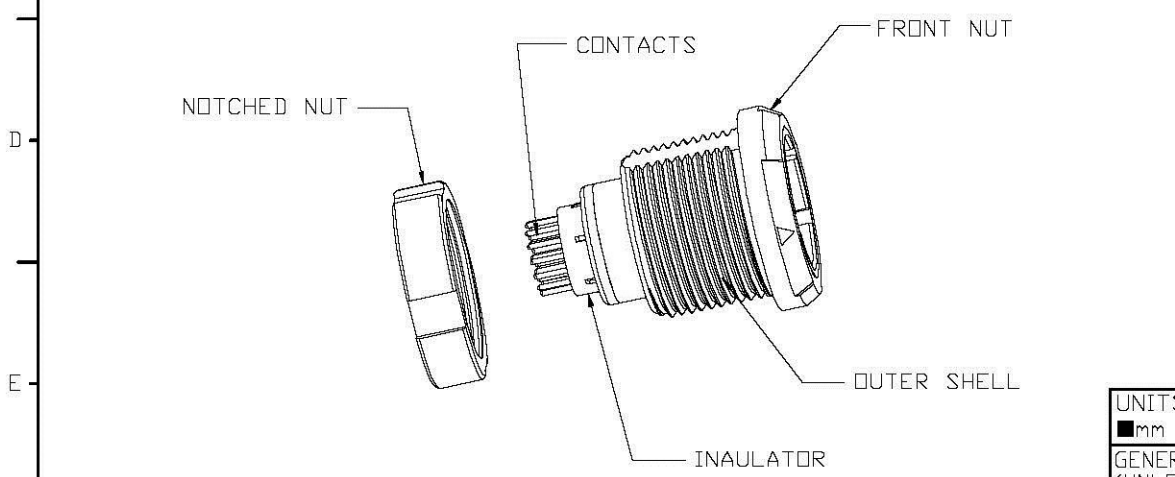
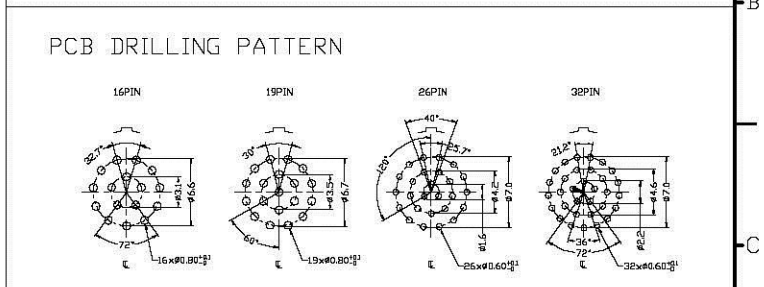
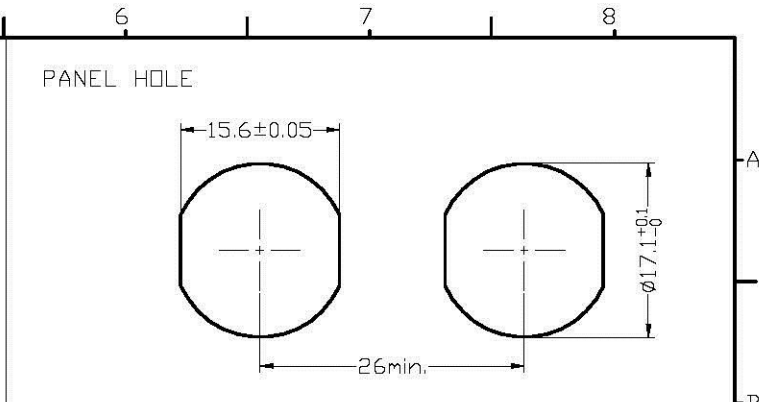
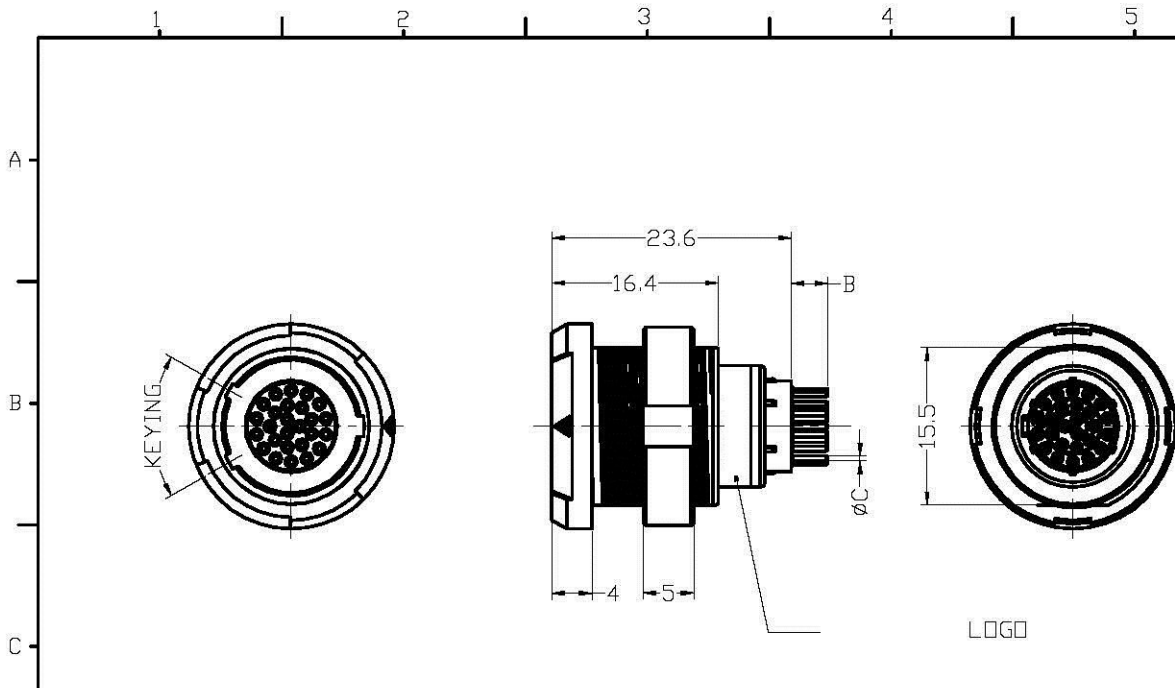
X1	NEW RELEASE	06/10/14	Seawen
REV.	DESCRIPTION	DATE	APPD



- NOTES :
- 1.MATERIAL
 OUTER SHELL : PSU/PEI
 INSULATOR : PEEK
 CONTACT : COPPER ALLOY
 NUT : PSU/PEI
 - 2.PLATING : Au ALL OVER Ni
 - 3.ALL DIMENSIONS ARE IN MILLIMETERS
 - 4.INGRESS PROTECTION : IP50
 - 5.ENDURANCE : 1000CYCLES
 - 6.WORKING TEMPERATURE : -50~150°C
 - 7.AVERAGE RETENTION FORCE FOR STRAIGHT PLUG PULL ON THE BACK NUT : 100N MIN.
 - 8.TORQUE : 0.8Nm MAX.
 - 9.RoHS DIRECTIVE COMPLIANCE

UNITS <input checked="" type="checkbox"/> mm <input type="checkbox"/> INCH		NAME: FIXED SOCKET WITH TWO NUTS		All connectors	
GENERAL TOLERANCES: (UNLESS SPECIFIED)		PART NO: R-MF1XXPNX0XXXX		TITLE: CUSTOMER DWG.	
	mm	INCH	APPD: Seawen06/10/14	DWG NO: 010-0000-C44	C
4 PLACE	± **.05	± **.002	CHKD: Annie06/10/14	SCALE: 2/1	SHEET: 3/5
2 PLACE	± 0.30	± **.012	DRAWN: Tommy06/10/14	REV: X1	
1 PLACE	± 0.50	± **.020			
ANGULAR:	X° ± 5°	X° ± **.19			

X1	NEW RELEASE	06/10/14	Seawen
REV.	DESCRIPTION	DATE	APPD



NOTES :

- 1.MATERIAL
 OUTER SHELL : PSU/PEI
 INSULATOR : PEEK
 CONTACT : COPPER ALLOY
 NUT : PSU/PEI
- 2.PLATING : Au ALL OVER Ni
- 3.ALL DIMENSIONS ARE IN MILLIMETERS
- 4.INGRESS PROTECTION : IP50
- 5.ENDURANCE : 1000CYCLES
- 6.WORKING TEMPERATURE : -50~150°C
- 7.AVERAGE RETENTION FORCE FOR STRAIGHT PLUG
 PULL ON THE BACK NUT: 100N MIN.
- 8.TORQUE : 0.8Nm MAX.
- 9.RoHS DIRECTIVE COMPLIANCE

UNITS <input checked="" type="checkbox"/> mm <input type="checkbox"/> INCH		NAME: FIXED SOCKET NUT FIXING		All connectors	
GENERAL TOLERANCES: (UNLESS SPECIFIED)		PART NO: R-MF4XXPNX0XXXX		TITLE: CUSTOMER DWG.	
	mm	INCH	APPD: Seawen06/10/14	DWG NO: 010-0000-C44	C
4 PLACE	± **.5	± **.020	CHKD: Annie06/10/14	SCALE: 2/1	SHEET: 4/5
3 PLACE	± **.5	± **.020	DRAWN: Tammy06/10/14	REV.:	X1
2 PLACE	± 0.30	± **.012			
1 PLACE	± 0.50	± **.020			
ANGULAR:	X° ± 5°	X° ± **.125			

X1	NEW RELEASE	06/10/14	Seawen
REV.	DESCRIPTION	DATE	APPD

1 2 3 4 5 6 7 8

R - M X X X X P X X 0 X X X X

1 BONED

2 KIND M=MEDICAL

3 STYLE F1=Fixed socket with two nuts,back panel mounting
F4=Fixed socket,plastic front nut fixing

4 OUTER SHELL MATERIAL G=GREY PSU
B=BLACK PSU
F=BLACK PEI
P=GREY PEI

5 NUT COLOUR 0=BLACK
1=WHITE
2=RED
4=YELLOW
5=GREEN
6=BLUE
8=GREY

12 LOGO 0="nextron" LOGO G=NO LOGO

11 NUMBER OF CONTACTS 16=16PIN 26=26PIN
19=19PIN 32=32PIN

10 KEYING B=60° H=80° J=90°

9 CABLE COLLET 0=NO CABLE COLLET

8 CONTACT PLATING 2=GOLD PLATED 20u"

7 CONTACT TYPE L=FEMALE TO SOLDER
N=FEMALE FOR PRINT

6 INSULATOR P=PEEK

NUMBER OF CONTACTS	16	19	26	32
VIEW FROM TERMINATION SIDE				
CONTACT Ø(mm)	0.7	0.7	0.5	0.5
SOLDER BUCKET Ø(mm)	0.8	0.8	0.4	0.4
TEST VOLTAGE(KV rms)	1.5	1.4	1.0	0.7
RATED CURRENT(A)	6	5	2	1.5
CONTACT RESISTANCE(mΩ)	<6.5	<6.5	<8.5	<8.5

NUMBER OF CONTACTS	16	19	26	32	
DIMENSIONS	A	3.2	4.7	4.7	4.7
	B	6.0	6.0	3.4	3.4

UNITS ■mm □INCH	NAME: FIXED SOCKET	
GENERAL TOLERANCES: (UNLESS SPECIFIED)	PART NO: R-MFXXXPXX0XXXX	TITLE: CUSTOMER DWG.
4 PLACE ± ** ± **	APPD: Seawen06/10/14	DWG NO: 010-0000-C44
3 PLACE ± ** ± **	CHKD: Annie06/10/14	SCALE: SHEET: REV: 2/1 5/5 X1
2 PLACE ± 0.30 ± **	DRAWN: Tommy06/10/14	
1 PLACE ± 0.50 ± **		
ANGULAR: X°± 5° X°± **		

REV.	DESCRIPTION	DATE	APPD
X1	NEW RELEASE	06/10/14	Seawen