

NOTE:

- 1. MATERIAL AND FINISH
- 1.1. SHELL ASSEMBLY: COPPER ALLOY, OUTER SHELL AND COLLET NUT Cr PLATING, OTHER METALLIC COMPONENTS NI PLATING
- 1.2. INSULATOR: PEEK
- 1.3. CONTACT: COPPER ALLOY, GOLD PLATING
- 2. RoHS COMPLIANCE
- 3. CRIMP CONTACT DETAILS SHOWN IN VIEW 1
- 4. PART NO.

R - F 2 B S * * 0 * D 2 * * *

CONTACT POS.
02-32=2pin-32pin

SHELL MATERIAL
0=Brass

CODE	CONTACT TYPE
2	Male Solder Contact
4	Female Solder Contact
3	Crimp Male Contact
3	Crimp Female Contact
1	Male Print Contact
3	Female Print Contact

CABLE OD	
21=OD:	1.4mm-2.2mm
31=OD:	2.2mm-3.2mm
42=OD:	3.2mm-4.2mm
52=OD:	4.2mm-5.2mm
62=OD:	5.2mm-6.2mm
72=OD:	6.2mm-7.2mm
82=OD:	7.2mm-8.2mm
92=OD:	8.2mm-9.2mm

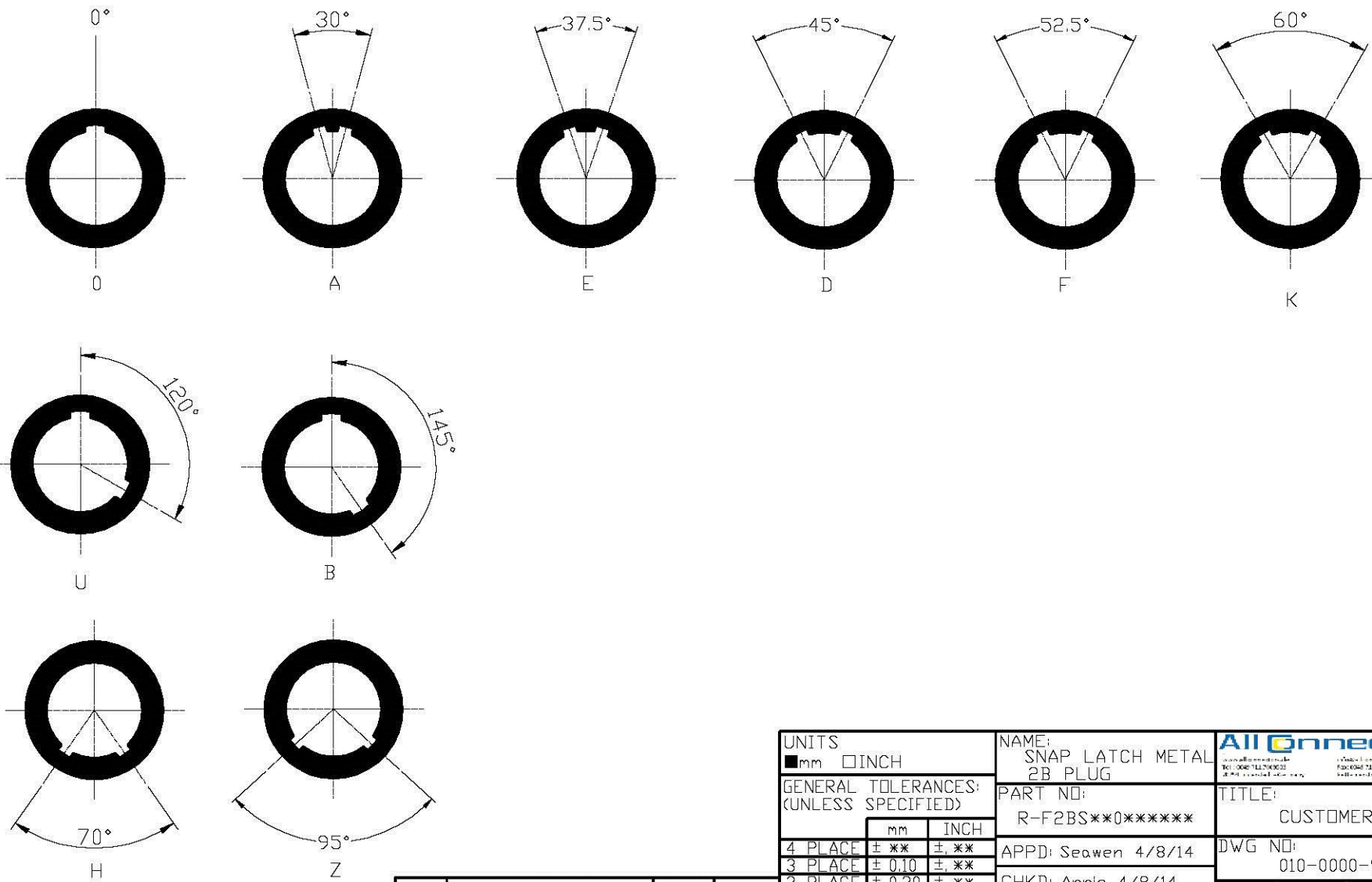
CODE	KEY ANGLES
0	0
A	30°
B	60°
"	"

COLLET NUT
2=Nut for Standard

UNITS ■mm □INCH	NAME: SNAP LATCH METAL 2B PLUG	All Connectors <small>18001 28201 28201 28201 TEL: 0048 741 708208 FAX: 0048 741 708304 W: 0111 28201 28201 - 28201</small>
GENERAL TOLERANCES: (UNLESS SPECIFIED)	PART NO: R-F2BS**0*D2***	TITLE: CUSTOMER DWG.
	APPD: Seawen 4/8/14	DWG NO: 010-0000-938
	CHKD: Annie 4/8/14	SCALE: SHEET: REV.:
	DRAWN: Alex 4/8/14	2.5/1 2/4 X1

REV.	DESCRIPTION	DATE	APPD
X1	NEW RELEASE	4/8/14	Seawen

KEY ANGLES (RECEPTACLE FRONT VIEW):



UNITS <input checked="" type="checkbox"/> mm <input type="checkbox"/> INCH		NAME: SNAP LATCH METAL 2B PLUG			
GENERAL TOLERANCES: (UNLESS SPECIFIED)		PART NO: R-F2BS**0*****		TITLE: CUSTOMER DWG.	
	mm	INCH	APPD: Seawen 4/8/14		DWG NO: 010-0000-938
4 PLACE	± **.05	± **.002	CHKD: Annie 4/8/14		C
3 PLACE	± 0.10	± **.004	DRAWN: Alex 4/8/14		
2 PLACE	± 0.30	± **.016			
1 PLACE	± 0.50	± **.020			
ANGULAR:	X° ± 2°	X° ± **.08			

X1	NEW RELEASE	4/8/14	Seawen
REV.	DESCRIPTION	DATE	APPD