

NOTE:

- 1. MATERIAL AND FINISH
  - 1.1. SHELL ASSEMBLY: COPPER ALLOY, OUTER SHELL AND COLLET NUT Cr PLATING, OTHER METALLIC COMPONENTS Ni PLATING
  - 1.2. INSULATOR: PEEK
  - 1.3. CONTACT: COPPER ALLOY, GOLD PLATING
- 2. RoHS COMPLIANCE
- ③ CRIMP CONTACT DETAILS SHOWN IN VIEW 1
- 4. PART NO.

R - F 2 B F \* \* 0 \* D 1 \* \* \*

CONTACT POS.  
02-32=2pin-32pin

SHELL MATERIAL  
0=Brass

CODE	CONTACT TYPE
2	Male Solder Contact
4	Female Solder Contact
③ C	Crimp Male Contact
③ M	Crimp Female Contact
1	Male Print Contact
3	Female Print Contact

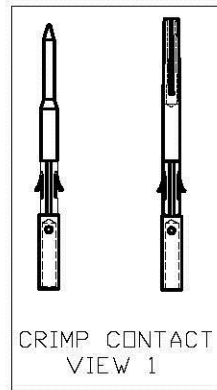
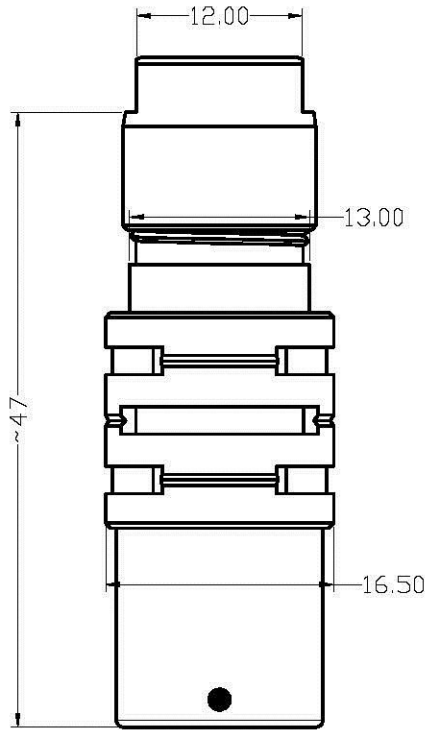
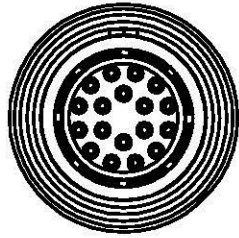
CABLE OD	
21=OD:	1.4mm-2.2mm
31=OD:	2.2mm-3.2mm
42=OD:	3.2mm-4.2mm
52=OD:	4.2mm-5.2mm
62=OD:	5.2mm-6.2mm
72=OD:	6.2mm-7.2mm
82=OD:	7.2mm-8.2mm
92=OD:	8.2mm-9.2mm

CODE	KEY ANGLES
0	0
A	30°
B	60°
..	..

COLLET NUT  
1=Nut for fitting a bend relief

REV.	DESCRIPTION	DATE	APPD
X1	NEW RELEASE	3/15/14	Seawen

UNITS ■ mm □ INCH	NAME: SNAP LATCH METAL 2B FLOATING SOCKET	<b>All Connectors</b> TEL: 408-254-2000 FAX: 408-254-2004
GENERAL TOLERANCES: (UNLESS SPECIFIED)	PART NO: R-F2BF**0*D1***	TITLE: CUSTOMER DWG.
4 PLACE ± ** ± **	APPD: Seawen 3/15/14	DWG NO: 010-0000-B29 C
3 PLACE ± 0.10 ± **	CHKD: Annie 3/15/14	SCALE: SHEET: REV.:
2 PLACE ± 0.30 ± **	DRAWN: Alex 3/15/14	2.5/1 1/4 X1
1 PLACE ± 0.50 ± **		
ANGULAR: X°±2° X°±**		



NOTE:

1. MATERIAL AND FINISH
  - 1.1. SHELL ASSEMBLY: COPPER ALLOY, OUTER SHELL AND COLLET NUT Cr PLATING, OTHER METALLIC COMPONENTS NI PLATING
  - 1.2. INSULATOR: PEEK
  - 1.3. CONTACT: COPPER ALLOY, GOLD PLATING
2. RoHS COMPLIANCE
- ③ CRIMP CONTACT DETAILS SHOWN IN VIEW 1
4. PART NO.

R - F 2 B F \* \* 0 \* D 2 \* \* \*

CONTACT PDS.  
02-32=2pin-32pin

SHELL MATERIAL  
0=Brass

CODE	CONTACT TYPE
2	Male Solder Contact
4	Female Solder Contact
③ C	Crimp Male Contact
③ M	Crimp Female Contact
1	Male Print Contact
3	Female Print Contact

CABLE OD	
21=OD:	1.4mm-2.2mm
31=OD:	2.2mm-3.2mm
42=OD:	3.2mm-4.2mm
52=OD:	4.2mm-5.2mm
62=OD:	5.2mm-6.2mm
72=OD:	6.2mm-7.2mm
82=OD:	7.2mm-8.2mm
92=OD:	8.2mm-9.2mm

CODE	KEY ANGLES
0	0
A	30°
B	60°
..	..

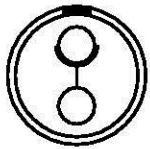
COLLET NUT  
2=Nut for Standard

UNITS ■ mm □ INCH		NAME: SNAP LATCH METAL 2B FLOATING SOCKET		All Connectors 141.8893.01.00000 272001 Shenzhen, China Tel: 8620 22106684 Fax: 8620 22106684 www.allconnectors.com	
GENERAL TOLERANCES: (UNLESS SPECIFIED)		PART NO: R-F2BF**0*D2***		TITLE: CUSTOMER DWG.	
	mm	INCH	APPD: Seawen 3/15/14	DWG NO: 010-0000-B29	
4 PLACE	± **	± **.**	CHKD: Annie 3/15/14	C	
3 PLACE	± 0.10	± **.**	DRAWN: Alex 3/15/14	SCALE: SHEET: REV.:	
2 PLACE	± 0.30	± **.**		2.5/1	2/4
1 PLACE	± 0.50	± **.**		X1	X1
ANGULAR:	X°± 2°	X°± **.**			

REV.	DESCRIPTION	DATE	APPD
X1	NEW RELEASE	3/15/14	Seawen

view from termination side pin part

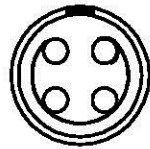
2 POS.



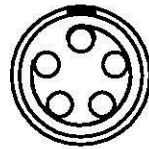
3 POS.



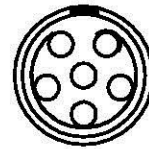
4 POS.



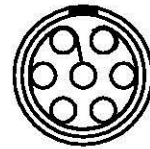
5 POS.



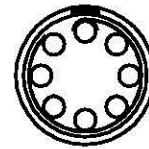
6 POS.



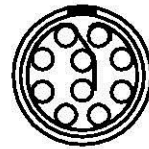
7 POS.



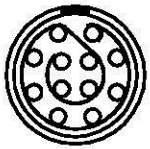
8 POS.



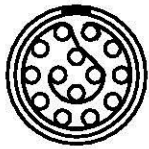
10 POS.



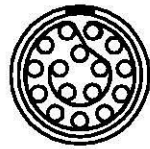
12 POS.



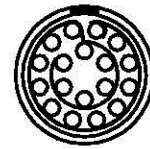
14 POS.



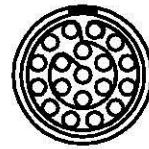
16 POS.



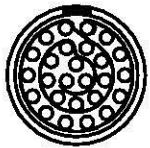
18 POS.



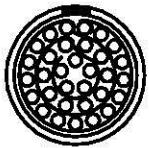
19 POS.



26 POS.

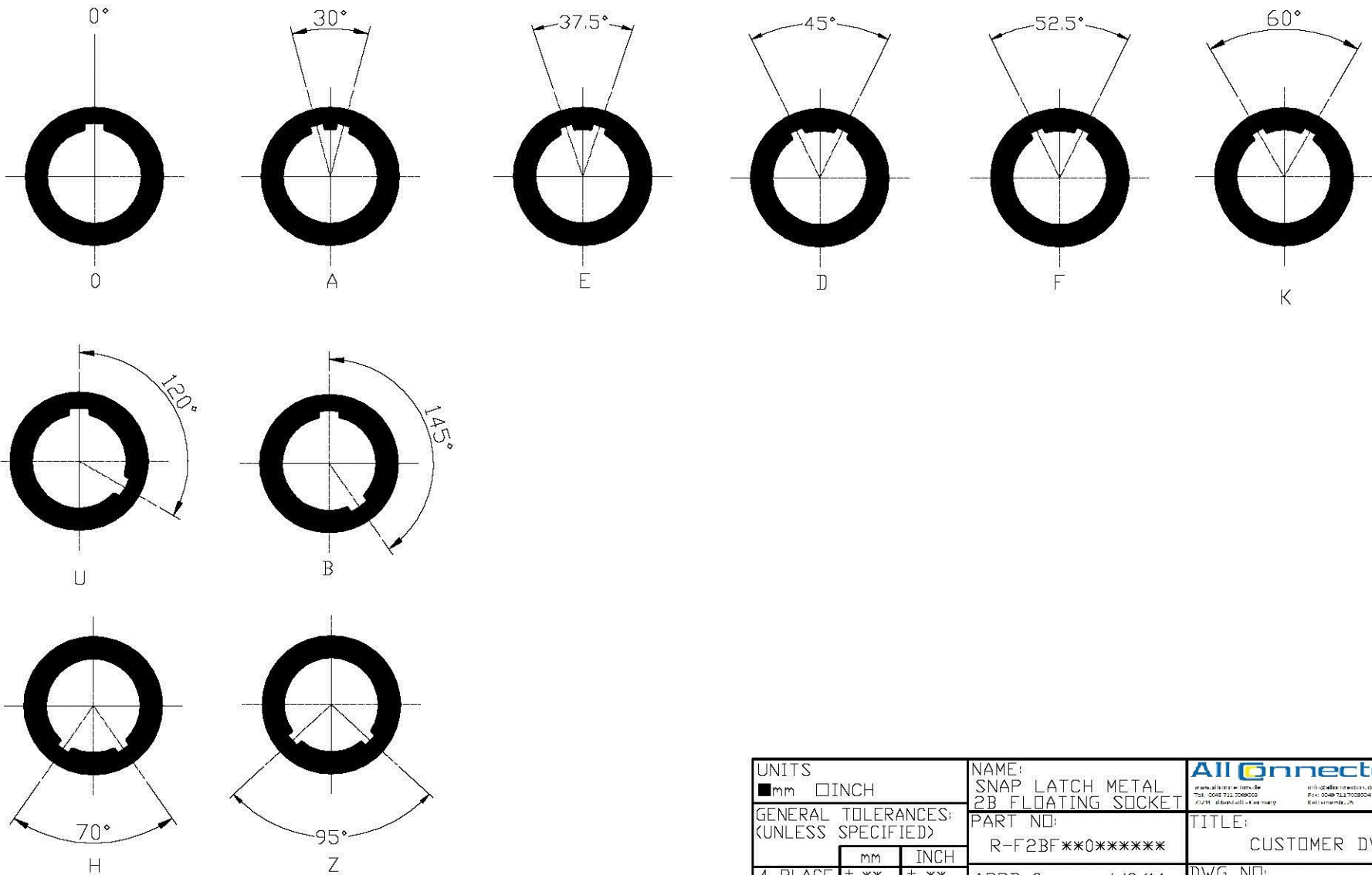


32 POS.



UNITS <input checked="" type="checkbox"/> mm <input type="checkbox"/> INCH		NAME: SNAP LATCH METAL 2B FLOATING SOCKET			
GENERAL TOLERANCES: (UNLESS SPECIFIED)		PART NO: R-F2BF**0*****		TITLE: CUSTOMER DWG.	
	mm	INCH	APPD: Seawen 3/15/14		DWG NO: 010-0000-B29
4 PLACE	± **.05	± **.002	CHKD: Annie 3/15/14		C
3 PLACE	± 0.10	± **.004	DRAWN: Alex 3/15/14		
2 PLACE	± 0.30	± **.016			
1 PLACE	± 0.50	± **.020			
ANGULAR:	X° ± 2°	X° ± **.087			
REV.	DESCRIPTION	DATE	APPD	SCALE: 2.5/1	SHEET: 3/4
X1	NEW RELEASE	3/15/14	Seawen	REV.:	X1

KEY ANGLES (RECEPTACLE FRONT VIEW)



UNITS <input checked="" type="checkbox"/> mm <input type="checkbox"/> INCH		NAME: SNAP LATCH METAL 2B FLOATING SOCKET			
GENERAL TOLERANCES: (UNLESS SPECIFIED)		PART NO: R-F2BF**0*****		TITLE: CUSTOMER DWG.	
	mm	INCH	APPD: Seawen 4/8/14		DWG NO: 010-0000-B29
4 PLACE	± **.05	± **.001	CHKD: Annie 4/8/14		C
3 PLACE	± 0.10	± **.001	DRAWN: Alex 4/8/14		SCALE: SHEET: REV.:
2 PLACE	± 0.30	± **.001	ANGULAR: X° ± 2°		2.5/1 4/4 X1
1 PLACE	± 0.50	± **.001			

X1	NEW RELEASE	4/8/14	Seawen
REV.	DESCRIPTION	DATE	APPD