

NOTE:

- MATERIAL AND FINISH
SHELL ASSEMBLY: COPPER ALLOY, OUTER SHELL Cr PLATING,
OTHER METALLIC COMPONENTS Ni PLATING
INSULATOR: PEEK
CONTACT: COPPER ALLOY, GOLD PLATING OVER Ni
- ROHS COMPLIANCE
- PART NO.

R - F 1 K R * * 0 4 0 0 0 0 0

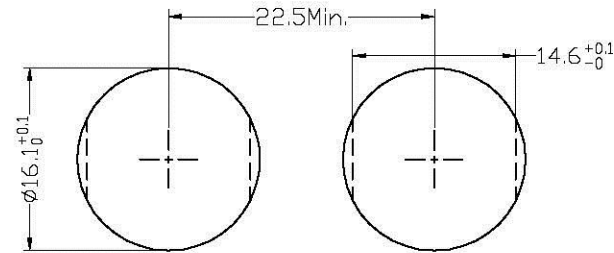
PRODUCT TYPE
F=SNAP LATCH METAL

CONTACT PLATING
4=Au 20u"

PRODUCT STYLE
1K=1K STYLE

NUMBER OF CONTACTS
02=02PIN
SEE TABLE

PRODUCT MODEL
R=RECEPTACLE



PANEL CUT-OUT

POSITIONS	02 PIN	03 PIN	04 PIN	05 PIN	06 PIN	07 PIN	08 PIN	10 PIN	14 PIN	16 PIN
VIEW FROM TERMINATION SIDE PIN PART										

UNITS
 mm INCH

GENERAL TOLERANCES:
(UNLESS SPECIFIED)

	mm	INCH
4 PLACE	±**	±**
3 PLACE	±0.30	±**
2 PLACE	±0.50	±**
1 PLACE	±0.80	±**
ANGULAR:	X°±2°	X°±**

NAME:
SNAP LATCH METAL
1K FIXED SOCKET

PART NO:
R-F1KR**0400000

APPD: Seawen 10/13/12

CHKD: Peter 10/13/12

DRAWN: Alex 10/13/12

All Connectors
CONNECTIONS
FOR THE
CONNECTIONS

TITLE:
CUSTOMER DWG.

DWG NO:
010-0000-B35

SCALE: SHEET: REV:
2.5/1 1/1 X1

REV.	DESCRIPTION	DATE	APPD
X1	NEW RELEASE	10/13/12	Seawen