

NOTE:

- MATERIAL AND FINISH
SHELL ASSEMBLY: COPPER ALLOY, OUTER SHELL AND COLLET
NUT Cr PLATING, OTHER METALLIC COMPONENTS
Ni PLATING
INSULATOR: PEEK
CONTACT: COPPER ALLOY, GOLD PLATING
- ROHS COMPLIANCE
- PART NO.

R - F 0 0 F * * 0 * D 1 * * *

Contact Pos.
02-04=2pin-4pin

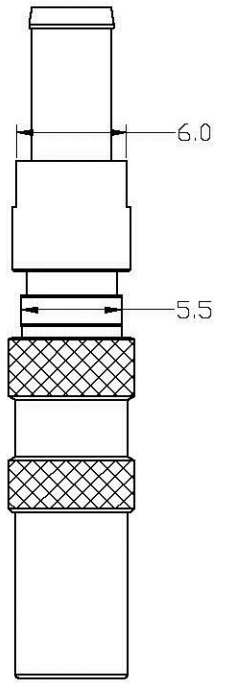
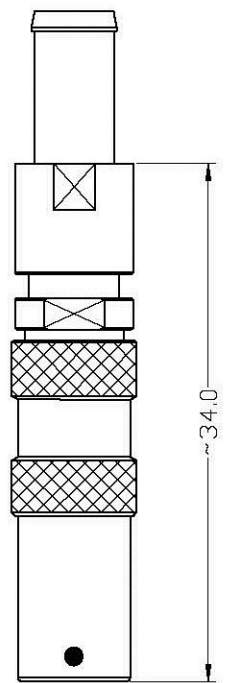
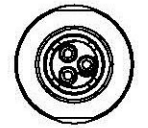
Shell Material
0=Brass

Cable OD
22=OD:1.4mm-2.2mm
27=OD:2.2mm-2.7mm
35=OD:2.7mm-3.5mm

CODE	Key Angles
0	0°
A	30°
J	45°
B	60°

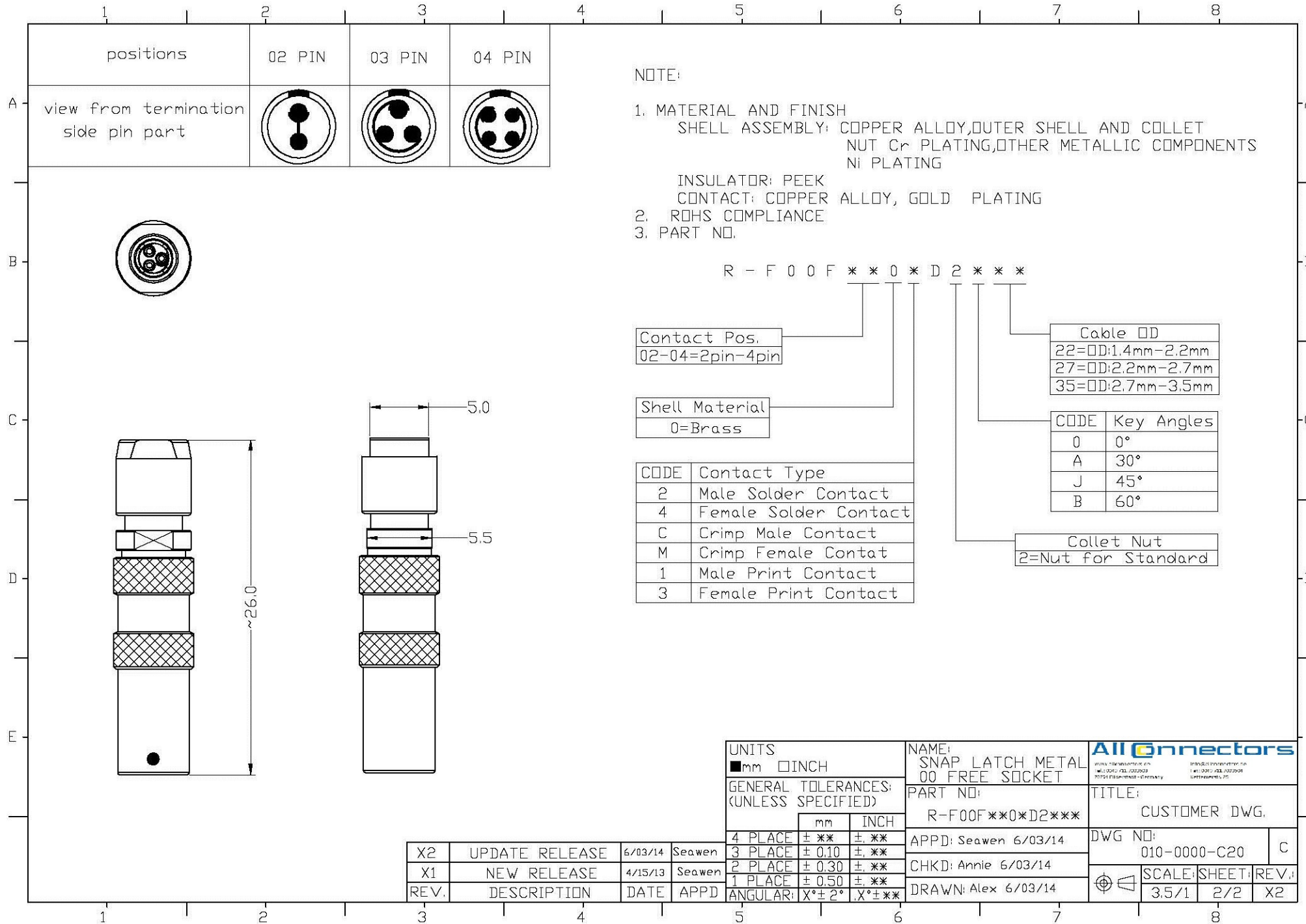
Collet Nut
1=Nut for fitting a bend relief

CODE	Contact Type
2	Male Solder Contact
4	Female Solder Contact
C	Crimp Male Contact
M	Crimp Female Contact
1	Male Print Contact
3	Female Print Contact



UNITS mm INCH		NAME: SNAP LATCH METAL 00 FREE SOCKET		All Connectors www.allconnectors.de tel: 0049 7331 90250 70775 Eichenlaub Germany	
GENERAL TOLERANCES: (UNLESS SPECIFIED)		PART NO: R-F00F**0*D1***		TITLE: CUSTOMER DWG.	
4 PLACE	± **	± .**	APPD: Seawen 6/03/14	DWG NO: 010-0000-C20	
3 PLACE	± 0.10	± .**	CHKD: Annie 6/03/14	SCALE: SHEET: REV.:	
2 PLACE	± 0.30	± .**	DRAWN: Alex 6/03/14	3.5/1	1/2
1 PLACE	± 0.50	± .**			X2
ANGULAR:	X° ± 2°	X° ± **			

REV.	DESCRIPTION	DATE	APPD
X2	UPDATE RELEASE	6/03/14	Seawen
X1	NEW RELEASE	4/15/13	Seawen



NOTE:

- 1. MATERIAL AND FINISH
SHELL ASSEMBLY: COPPER ALLOY, OUTER SHELL AND COLLET NUT Cr PLATING, OTHER METALLIC COMPONENTS Ni PLATING
- INSULATOR: PEEK
- CONTACT: COPPER ALLOY, GOLD PLATING
- 2. ROHS COMPLIANCE
- 3. PART NO.

R - F 0 0 F * * 0 * D 2 * * *

Contact Pos.
02-04=2pin-4pin

Shell Material
0=Brass

Cable OD
22=OD:1.4mm-2.2mm
27=OD:2.2mm-2.7mm
35=OD:2.7mm-3.5mm

CODE	Key Angles
0	0°
A	30°
J	45°
B	60°

Collet Nut
2=Nut for Standard

CODE	Contact Type
2	Male Solder Contact
4	Female Solder Contact
C	Crimp Male Contact
M	Crimp Female Contact
1	Male Print Contact
3	Female Print Contact

UNITS	
<input checked="" type="checkbox"/> mm	<input type="checkbox"/> INCH
GENERAL TOLERANCES: (UNLESS SPECIFIED)	
	mm INCH
4 PLACE	± **.01 ± **.001
3 PLACE	± 0.10 ± **.005
2 PLACE	± 0.30 ± **.020
1 PLACE	± 0.50 ± **.030
ANGULAR:	X° ± 2° X° ± **.050

NAME:
SNAP LATCH METAL
00 FREE SOCKET

PART NO:
R-F00F**0*D2***

APPD: Seawen 6/03/14

CHKD: Annie 6/03/14

DRAWN: Alex 6/03/14

Allconnectors

TITLE:
CUSTOMER DWG.

DWG NO:
010-0000-C20

SCALE: 3.5/1

SHEET: 2/2

REV: C

REV. 1 X2

REV.	DESCRIPTION	DATE	APPD
X2	UPDATE RELEASE	6/03/14	Seawen
X1	NEW RELEASE	4/15/13	Seawen