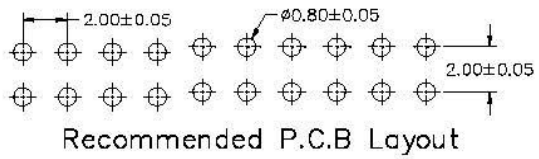
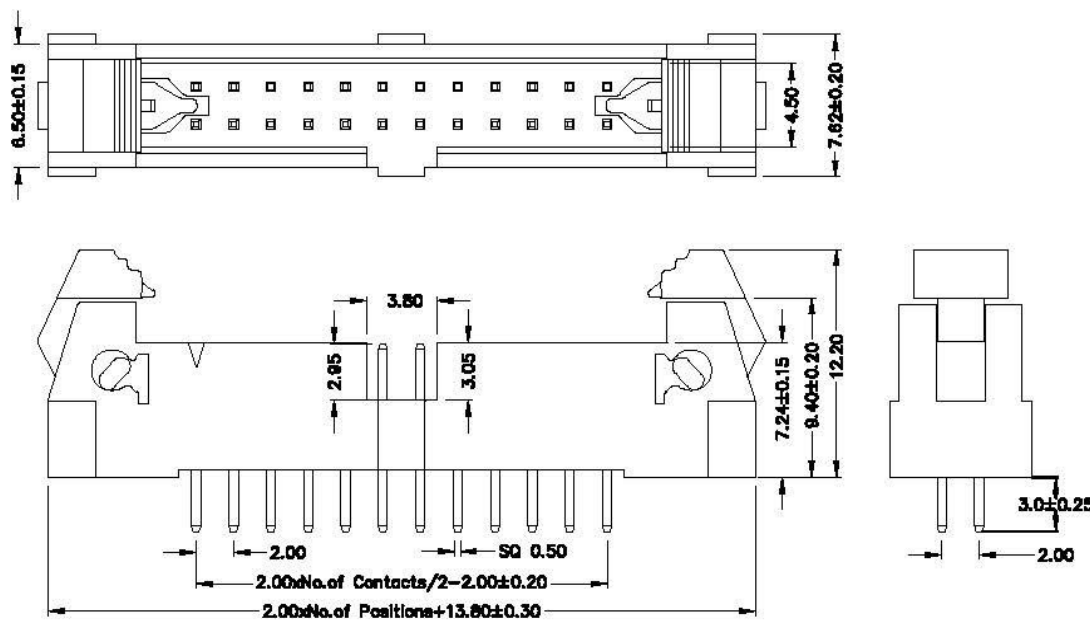


## 2.00mm PITCH EJECTOR HEADER CONNECTOR, VERTICAL STRAIGHT, SHORT LATCH, ROHS COMPLIANT



### Material Information:

Terminal: Brass  
 Insulator: LCP+30%G. F, UL94V-0  
 Plating: Au or Sn plated over 50 U' Ni  
 All materials compliant with ROHS

### Technical Specifications:

Current Rating: 2.0A  
 Contact Resistance: 20mΩ Max  
 Insulation Resistance: 1000M Ωmin  
 Dielectric Voltage: 500V AC/minute  
 Operation Temperature: -40° C to +105° C

### Ordering Information

BESS - XX XX XX C1 X  
 ① ② ③

- ① No. of Contacts: 10 To 64
- ② Plating Option:  
 01: Gold Flash Over All  
 03: 3U' Gold plated Over All  
 05: 5U' Gold Plated Over All  
 0S: Tin Plated Over All
- ③ Packing Option:  
 A: Plastic Tray B: PE Bag  
 C: Tube



www.allconnectors.de info@allconnectors.de  
 Tel: 0049 7141 306500 Fax: 0049 7141 306504  
 KCTP-Rilberstadt - Germany Kollmannsh. 25

绘图 (DRAWN)	孙高田	投影 (PROJECT)	第一角投影	公差 (TOLERANCE)	料号 (PART NO)	BESS-XXXXXXC1X
审核 (CHECKED)	刘思晴	单位 (UNIT)	MM	0.0 ± 0.30	品名 (NAME)	2.00间距牛角 短耳 180°
核准 (APPROVE)		比例 (SCALE)	1:1	0.00 ± 0.20		
		版本 (EDITION)	A			
		日期 (DATE)	2013/12/13			