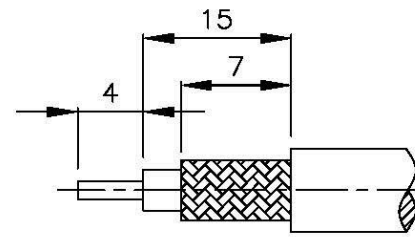
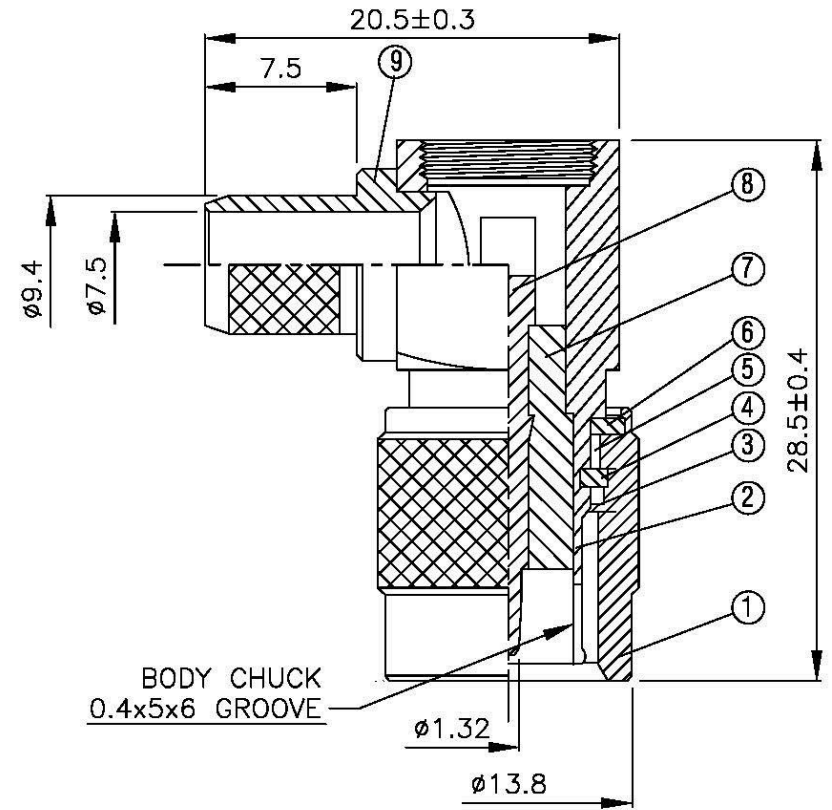
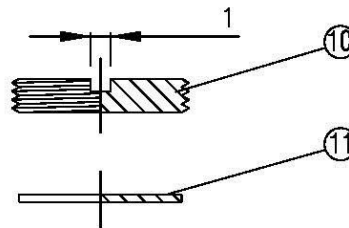
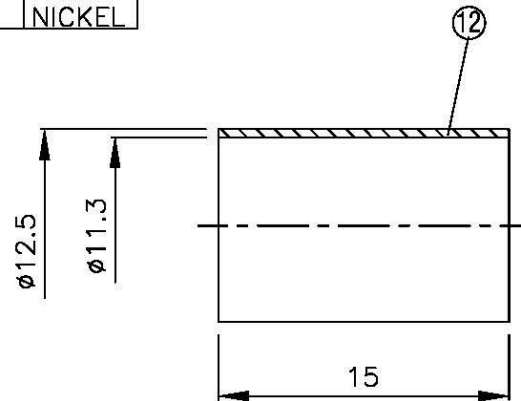
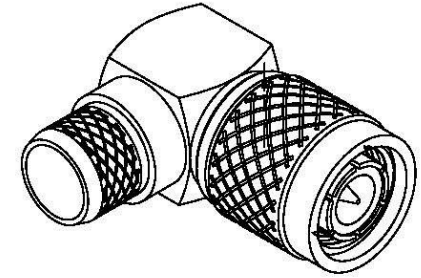


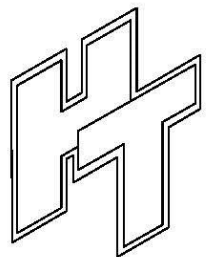
NO	DESCRIPTION	MATERIAL	Q'TY	FINISH
1	SHELL	BRASS	1	NICKEL
2	BODY 1	BRASS	1	NICKEL
3	GASKET	SI RUBBER	1	RUBBER
4	WASHER	BRASS	1	NICKEL
5	SPRING	SK-5	1	NICKEL
6	WASHER	BRASS	1	NICKEL
7	INSULATION	DELRIN	1	DELRIN
8	PIN	BRASS	1	GOLD
9	BODY 2	BRASS	1	NICKEL
10	WASHER	BRASS	1	NICKEL
11	INSULATION	TEFLON	1	TEFLON
12	RING	BRASS	1	NICKEL



(Recommended Stripping Dimension)



BODY CHUCK
0.4x5x6 GROOVE



All Connectors

www.allconnectors.de
Tel.: 0645 711 7900593
43146 Hildesheim, Germany

info@allconnectors.de
Fax: 0645 711 5002594
Kontaktcenter 24

TITLE **MALE ANGLE CRIMP
FOR RG-213/U**

PART NO. **TNC-04BV1-DGN**

DRAWING NO. **TNC 04BV1 DGN**

DRAWN **MARY** DATE **96.02.14**

CHECKED **黃巧君** DATE

Q.A. **蘇姿潔** DATE

APPROVAL **徐燦霖** DATE

REVISION DATE

DIMENSIONS ARE IN MILLIMETERS

UNLESS OTHERWISE SPECIFIED
TOLERANCE

0.5-5= ± 0.2 120-315= ± 1

5-30= ± 0.4 315-1000= ± 1.6

30-120= ± 0.6 1000-2000= ± 2.4

SCALE **4:1** SIZE **A**

REVISION

DESCRIPTION ENGINEER