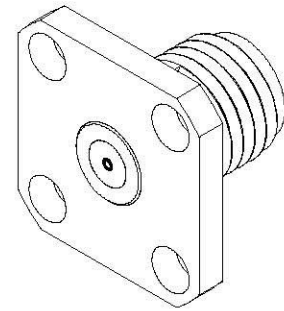
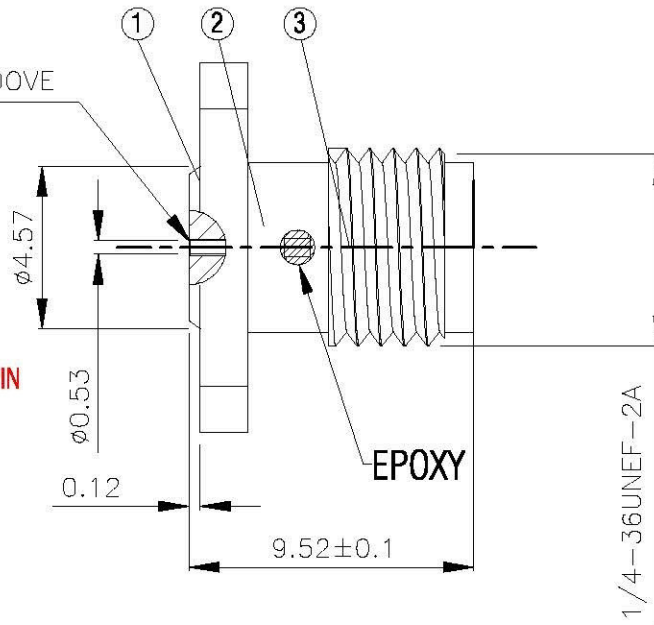


NO	DESCRIPTION	MATERIAL	Q'TY	FINISH	REMARK
1	WAHER	BRASS	1	GOLD	W-0015-G
2	BODY	BRASS	1	NICKEL	B-SUMA1631-N
3	INSULATION	TEFLON	1	TEFLON	I-0723T
4	PIN	BE CU	1	GOLD	P-SUMA1088-G-3

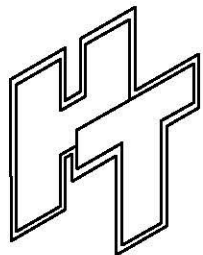
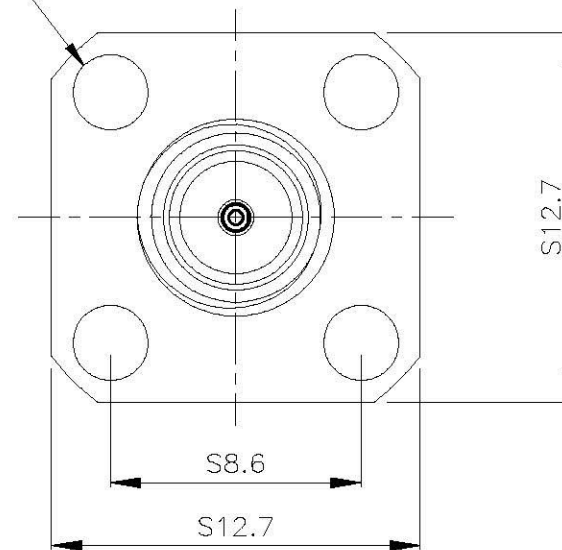


PIN CHUCK  
0.2X2X2 GROOVE

ACCEPT 0.46 MM PIN



∅2.6X4



**All Connectors**

www.allconnectors.com  
TEL: 0049 711 7009909  
70754 Hilderstein - Germany

info@allconnectors.com  
Fax: 0049 711 7009909  
Kieckheferstr. 25

**TITLE SUPER SMA FEMALE  
LAUNCHERS WITH TRANSITION PINS**

**PART NO. SUSMA-07V4-TGSUS-3**

**DRAWING NO. SUSMA-07V4-TGSUS-3**

**DRAWN** 蘇姿潔 **DATE** 99.12.01

**CHECKED** 蘇志欣 **DATE** 99.12.01

**Q.A.** 莊千慧 **DATE**

**APPROVAL** 徐燦霖 **DATE**

**REVISION** **DATE**

**DIMENSIONS ARE IN MILLIMETERS**

**UNLESS OTHERWISE SPECIFIED  
TOLERANCE**

0.5-5=±0.2 120-315=±1

5-30=±0.4 315-1000=±1.6

30-120=±0.6 1000-2000=±2.4

**SCALE** 4:1 **SIZE** A

**REVISION**

**DESCRIPTION** **ENGINEER**

4

3

2

1