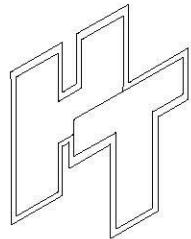
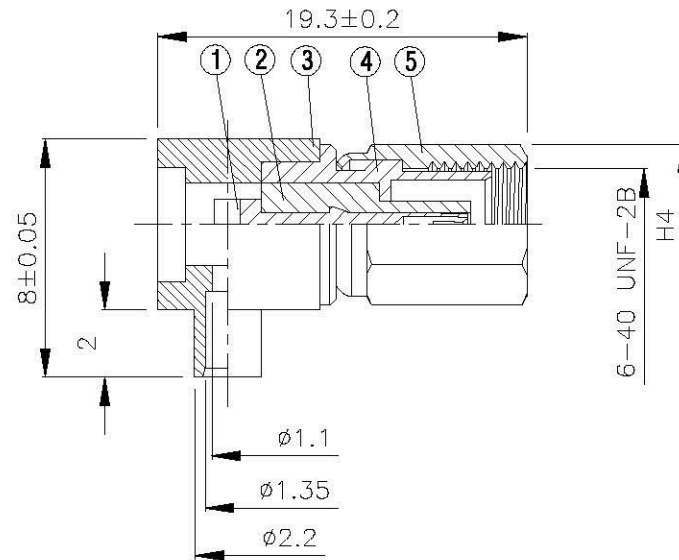
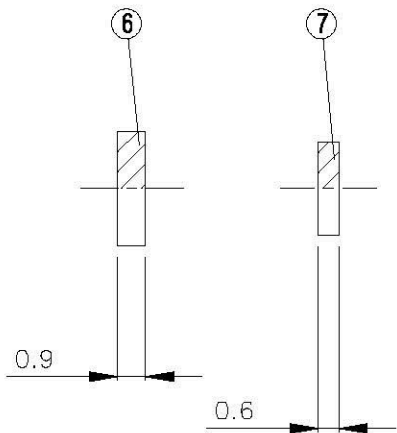
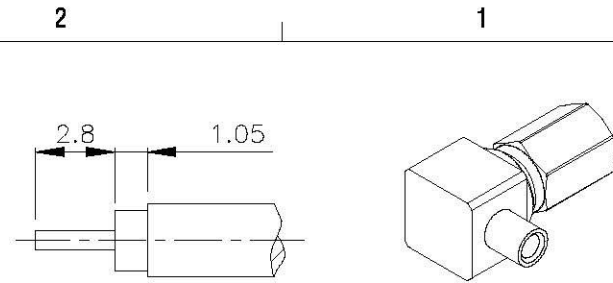


NO	DESCRIPTION	MATERIAL	Q'TY	FINISH	REMARK
1	PIN	BE CU	1	GOLD	P-SSMC0303--G
2	INSULATION 1	TEFLON	1	TEFLON	I-0223T
3	BODY 1	BRASS	1	GOLD	B-SSMC1026-G
4	BODY 2	BE CU	1	GOLD	B-SSMC0464-G
5	BODY 3	BRASS	1	GOLD	B-SSMC0465-G
6	WASHER	BRASS	1	GOLD	W-0017-G
7	INSULATION 2	TEFLON	1	TEFLON	I-0113T



All Connectors
 make all connectors etc. Installation and repair etc.
 Tel: 0800 222 7002222 Fax: 0800 222 7002222
 7022M FUSSEN/GERMANY KEMMELSTR. 22

TITLE SSMC FEMALE ANGLE SOLDER FOR M17/151(.047")

PART NO. SSMC-02V3-TGG

DRAWING NO. SSMC-02V3-TGG

DRAWN MARY **DATE** 94.11.30

CHECKED 沈佳憫 **DATE** 94.11.30

Q.A. 蘇姿潔

APPROVAL 徐燦霖

REVISION

DIMENSIONS ARE IN MILLIMETERS

UNLESS OTHERWISE SPECIFIED TOLERANCE

0.5-5=±0.2	120-315=±1
5-30=±0.4	315-1000=±1.6
30-120=±0.6	1000-2000=±2.4

SCALE 4:1 **SIZE** A

REVISION	
DESCRIPTION	ENGINEER