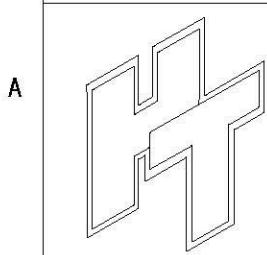
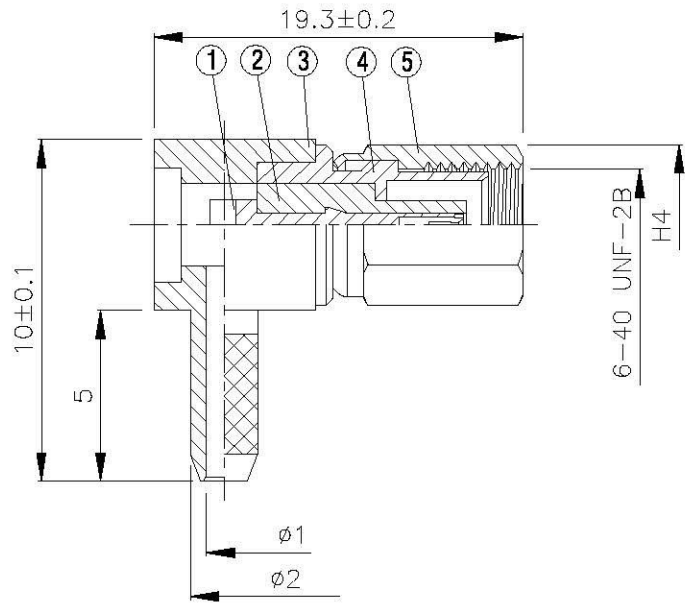
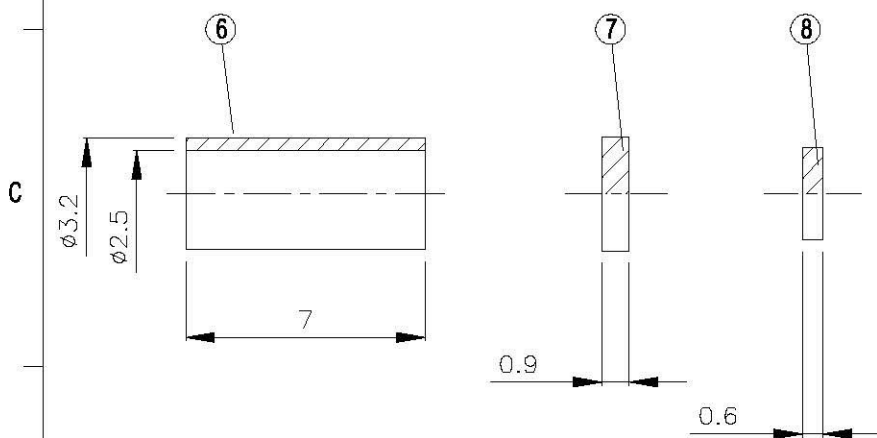
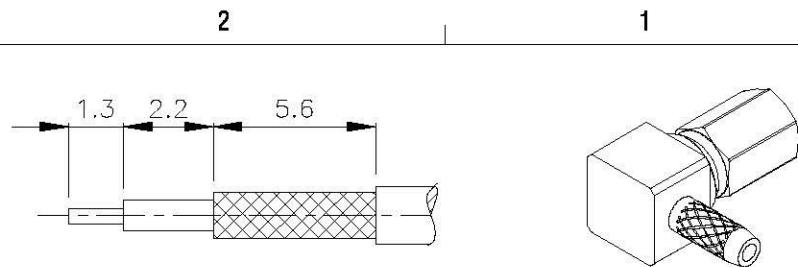


NO	DESCRIPTION	MATERIAL	Q'TY	FINISH	REMARK
1	PIN	BE CU	1	GOLD	P-SSMC0303--G
2	INSULATION 1	TEFLON	1	TEFLON	I-0223T
3	BODY 1	BRASS	1	GOLD	B-SSMC0472-G
4	BODY 2	BE CU	1	GOLD	B-SSMC0464-G
5	BODY 3	BRASS	1	GOLD	B-SSMC0465-G
6	RING	BRASS	1	GOLD	R-0038-G
7	WASHER	BRASS	1	GOLD	W-0017-G
8	INSULATION 2	TEFLON	1	TEFLON	I-0113T



**All Connectors**  
 www.allconnectors.com info@allconnectors.com  
 TEL: 0049 7143 7023 3603 FAX: 0049 7143 7023 3602  
 22727 FRIEDRICHSDORF - Germany E-MAIL: info@ac.com

**TITLE** SSMC FEMALE ANGLE CRIMP FOR RG 178U  
**PART NO.** SSMC-02M-TGG  
**DRAWING NO.** SSMC 02M TGG

**DRAWN** MARY **DATE** 96.07.09  
**CHECKED** 蘇志欣 **DATE**  
**Q.A.** 蘇姿潔 **DATE**  
**APPROVAL** 徐燦霖 **DATE**  
**REVISION** **DATE**

**DIMENSIONS ARE IN MILLIMETERS**  
**UNLESS OTHERWISE SPECIFIED TOLERANCE**  
 0.5-5=±0.2 120-315=±1  
 5-30=±0.4 315-1000=±1.6  
 30-120=±0.6 1000-2000=±2.4  
**SCALE** 4:1 **SIZE** A

REVISION	
DESCRIPTION	ENGINEER