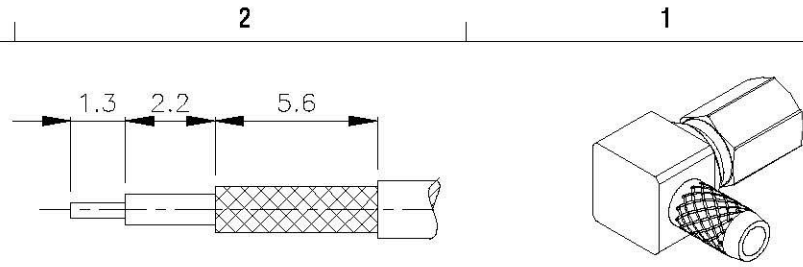


NO	DESCRIPTION	MATERIAL	Q'TY	FINISH	REMARK
1	PIN	BE CU	1	GOLD	P-SSMC0303--G
2	INSULATION 1	TEFLON	1	TEFLON	I-0223T
3	BODY 1	BRASS	1	GOLD	B-SSMC0470-G
4	BODY 2	BE CU	1	GOLD	B-SSMC0464-G
5	BODY 3	BRASS	1	GOLD	B-SSMC0465-G
6	RING	BRASS	1	GOLD	R-0001-G
7	WASHER	BRASS	1	GOLD	W-0017-G
8	INSULATION 2	TEFLON	1	TEFLON	I-0113T



D

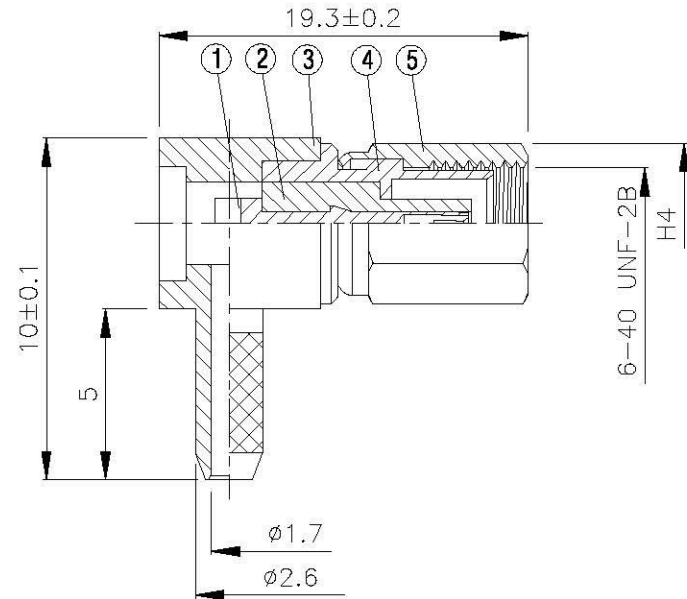
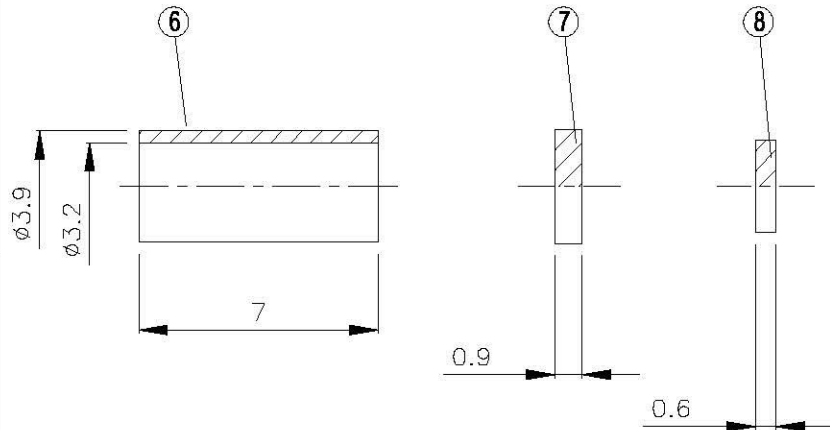
D

C

C

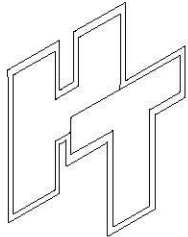
B

B



A

A



All Connectors

www.allconnectors.de
 Tel: +49 911 7095025
 02964 Hiltelsdorf, Germany

Info@allconnectors.de
 Fax: +49 911 7095024
 info@metall.de

TITLE **SSMC FEMALE ANGLE CRIMP FOR RG 316/U**

PART NO. **SSMC-02LV1-TGG**

DRAWING NO. **SSMC 02LV1 TGG**

DRAWN **MARY** DATE **96.07.09**

CHECKED **蘇志欣** DATE

Q.A. **蘇姿潔** DATE

APPROVAL **徐燦霖** DATE

REVISION DATE

DIMENSIONS ARE IN MILLIMETERS

UNLESS OTHERWISE SPECIFIED TOLERANCE

0.5-5=±0.2 120-315=±1

5-30=±0.4 315-1000=±1.6

30-120=±0.6 1000-2000=±2.4

SCALE **4:1** SIZE **A**

REVISION

DESCRIPTION ENGINEER

4

3

2

1