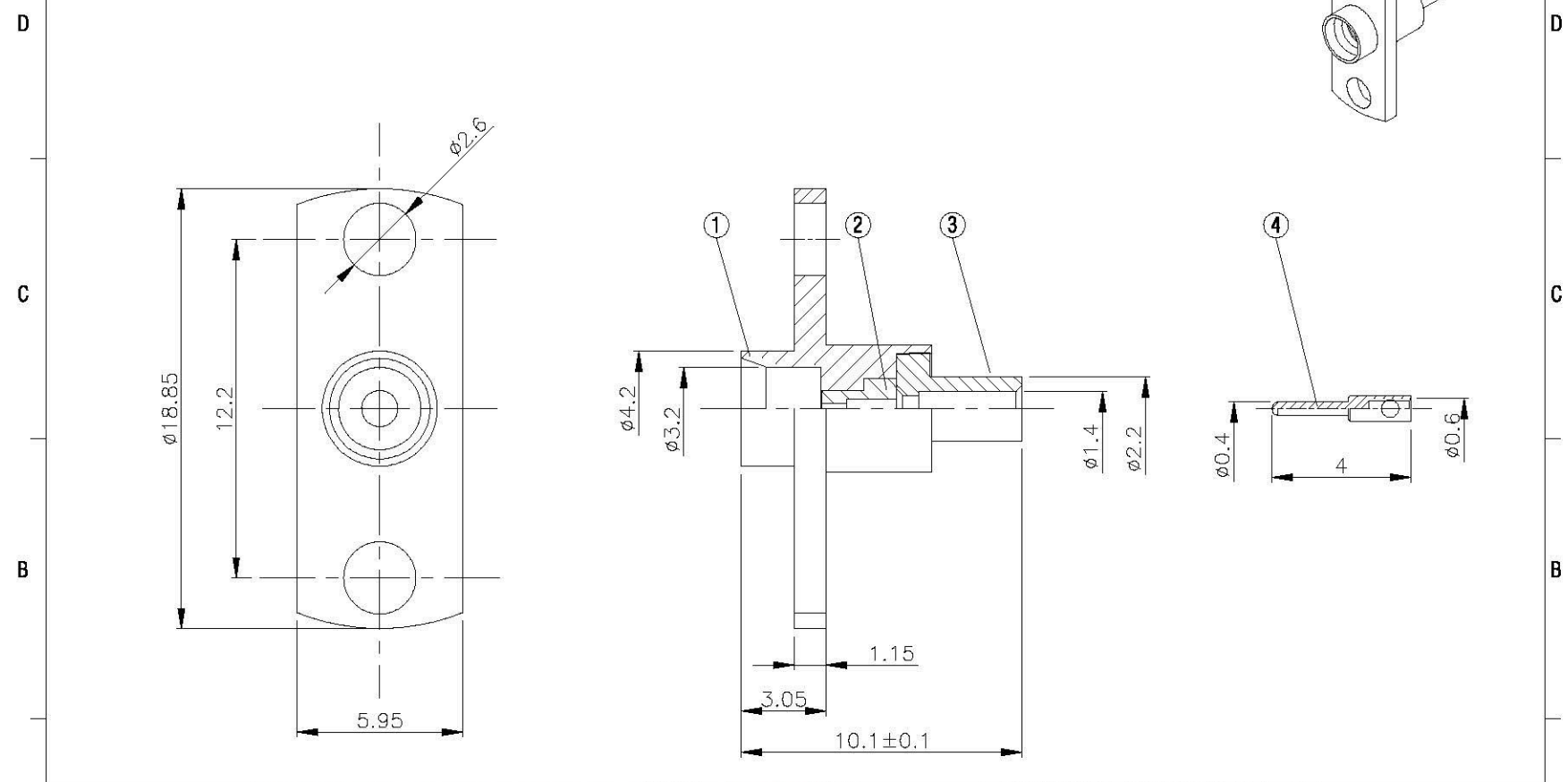
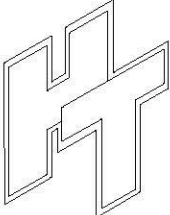







NO	DESCRIPTION	MATERIAL	Q'TY	FINISH	REMARK
1	BODY	SUS303	1	PASSIVATED	B-SMP1399-SUS
2	INSULATION	TEFLON	1	TEFLON	I-0033T
3	BODY	BRASS	1	GOLD	B-MCX0150-G
4	PIN	PH.BRONZE	1	GOLD	P-SMP0972-G



		DRAWN  DATE <b>08.04.14</b>	DIMENSIONS ARE IN MILLIMETERS UNLESS OTHERWISE SPECIFIED TOLERANCE		REVISION		
	<small>           www.allconnectors.de            Tel.: 0049 9144 9000200            91074 FRIEDLAND - Germany         </small>	CHECKED  DATE			<small>           info@allconnectors.de            Fax: 0049 9144 9000204            Kollathweg 2b         </small>	0.5-5 = $\pm 0.2$ 120-315 = $\pm 1$ 5-30 = $\pm 0.4$ 315-1000 = $\pm 1.6$ 30-120 = $\pm 0.6$ 1000-2000 = $\pm 2.4$	DESCRIPTION
	TITLE <b>SMP FEMALE FLANGE MOUNT UT-47 (.047)(CATCHERS MIT)</b>	Q.A.  DATE	APPROVAL  DATE	SCALE	4:1	SIZE	A
	PART NO. <b>SMP-22V3-TGSUS</b>	REVISION	DATE				
	DRAWING NO. <b>SMP-22V3-TGSUS</b>						