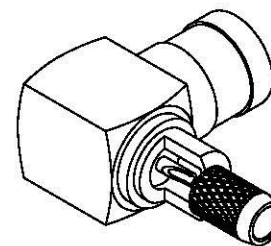


NO	DESCRIPTION	MATERIAL	Q'TY	FINISH	REMARK
1	BODY 1	BRASS	1	GOLD	B-SMB0602-G
2	INSULATION 1	TEFLON	1	TEFLON	I-0072T
3	PIN	BE CU	1	GOLD	P-SMB0394-G
4	BODY 2	BRASS	1	GOLD	B-SMB0479-G
5	BODY 3	BRASS	1	GOLD	B-SMB0245-G
6	WASHER 2	BE CU	1	NICKEL	W-0035-N
7	INSULATION 2	TEFLON	1	TEFLON	I-0280T
8	BODY 4	BRASS	1	GOLD	B-SMB0603-G
9	RING	BRASS	1	GOLD	R-0040-G



D

D

C

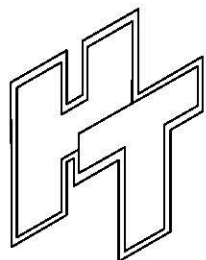
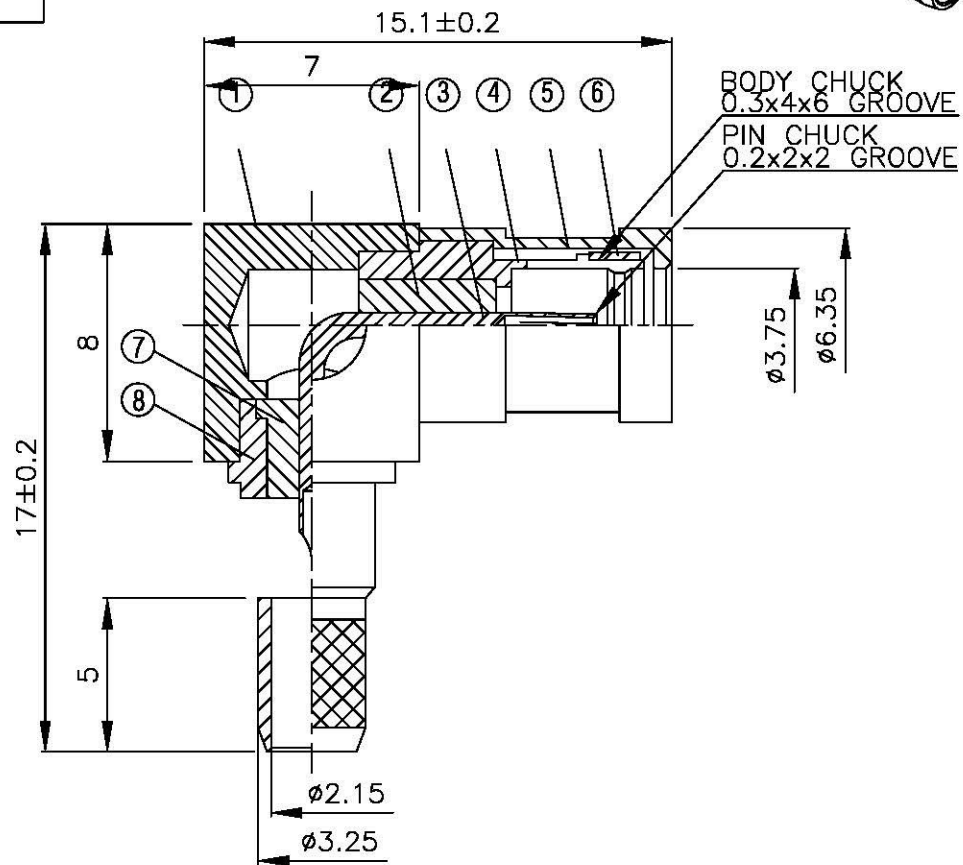
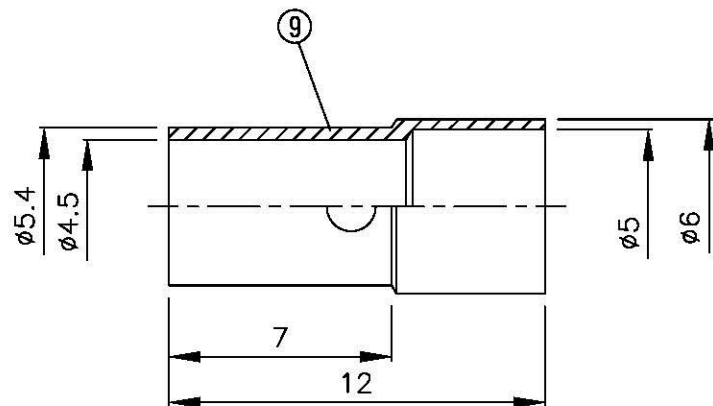
C

B

B

A

A



Allconnectors

www.allconnectors.de
Tel: +0049 711 200900
70728 Filioerstadt - Germany

info@allconnectors.de
Fax: +0049 711 200900
Kettnerstr. 25

TITLE SMB FEMALE ANGLE CRIMP
FOR BT3002 (75 OHM)

PART NO. SMB-19V1F-TGG

DRAWING NO. SMB 19V1F TGG

DRAWN MARY DATE 96.06.29

CHECKED 蘇志欣 DATE

Q.A. 蘇姿潔 DATE

APPROVAL 徐燦霖 DATE

REVISION DATE

DIMENSIONS ARE IN MILLIMETERS

UNLESS OTHERWISE SPECIFIED
TOLERANCE

0.5-5=±0.2 120-315=±1

5-30= ±0.4 315-1000=±1.6

30-120±0.6 1000-2000=±2.4

SCALE 4:1 SIZE A

REVISION

DESCRIPTION	ENGINEER

4

3

2

1