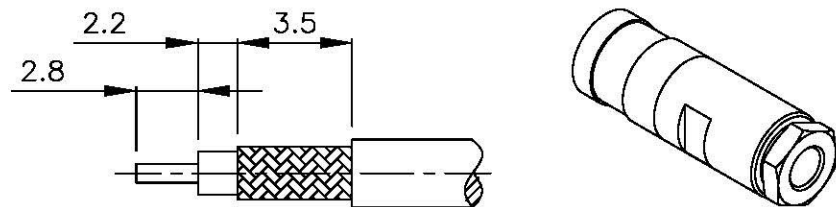
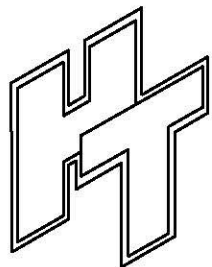
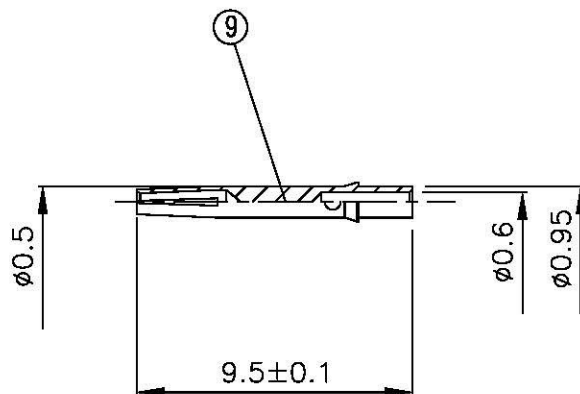
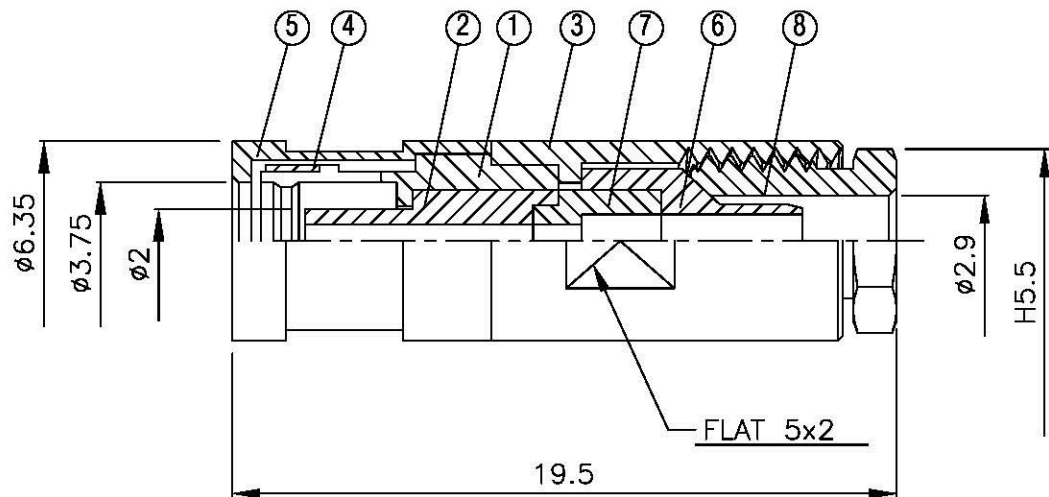


NO	DESCRIPTION	MATERIAL	Q'TY	FINISH	REMARK
1	BODY 1	BRASS	1	GOLD	B-SMB0263-G
2	INSULATION 1	TEFLON	1	TEFLON	I-0053T
3	BODY 2	BRASS	1	GOLD	B-SMB0799-G
4	WASHER	BE CU	1	GOLD	W-0035-G
5	BODY 3	BRASS	1	GOLD	B-SMB0245-G
6	BODY 4	BRASS	1	GOLD	B-SMB0797-G
7	INSULATION 2	TEFLON	1	TEFLON	I-0387T
8	NUT	BRASS	1	GOLD	N-0037-G
9	PIN	BE CU	1	GOLD	P-SMB0570-G



(Recommended Stripping Dimension)



**All Connectors**

www.allconnectors.de  
 Toll: 0819 711 7005503  
 70754 Filzlochstr. - Germany

info@allconnectors.de  
 Fax: 0819 711 7005504  
 Kettnerstr. 25

TITLE **SMB FEMALE CLAMP FOR  
 RG-316/U**

PART NO. **SMB-30LV1-TGG**

DRAWING NO. **SMB 30LV1 TGG**

DRAWN **MARY** DATE **93.10.13**

CHECKED **蘇姿潔** DATE

Q.A. **馮健華** DATE

APPROVAL **徐燦霖** DATE

REVISION DATE

DIMENSIONS ARE IN MILLIMETERS

UNLESS OTHERWISE SPECIFIED  
 TOLERANCE

0.5-5=±0.2	120-315=±1
5-30=±0.4	315-1000=±1.6
30-120±0.6	1000-2000=±2.4

SCALE **4:1** SIZE **A**

REVISION

DESCRIPTION	ENGINEER