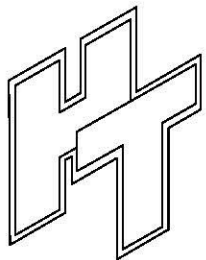
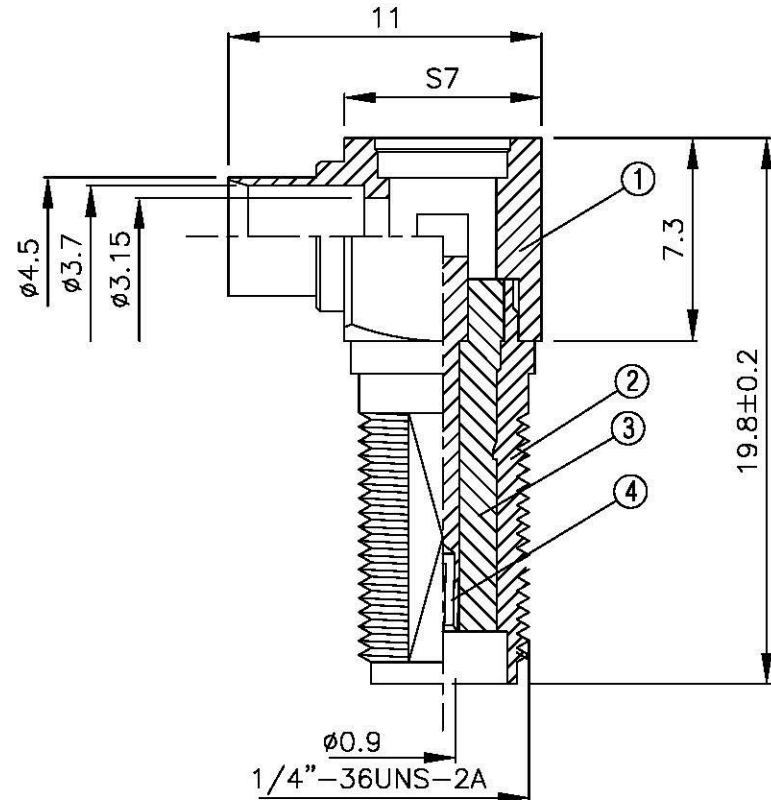
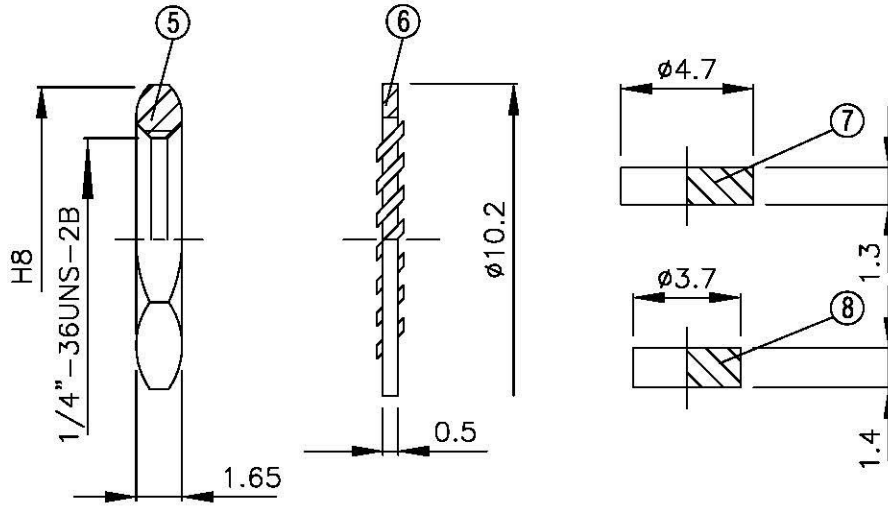
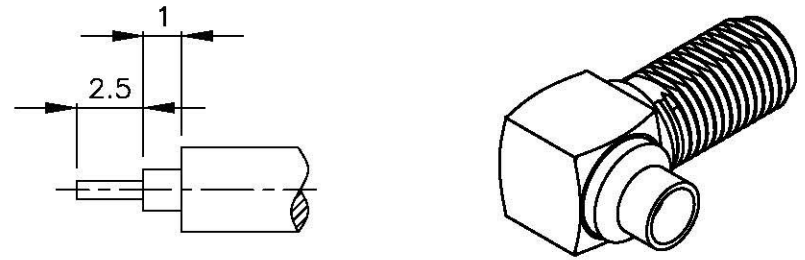


NO	DESCRIPTION	MATERIAL	Q'TY	FINISH	REMARK
1	BODY	BRASS	1	NICKEL	B-SMA0486-G
2	BODY	BRASS	1	NICKEL	B-SMA0145-G
3	INSULATION	TEFLON	1	TEFLON	I-0198T
4	PIN	BE CU	1	GOLD	P-SMA0818-G
5	NUT	BRASS	2	GOLD	N-0006-G
6	WASHER	BRASS	2	GOLD	W-0016-G
7	WASHER	BRASS	1	GOLD	W-0023-G
8	INSULATION	TEFLON	1	TEFLON	I-0136T



Allconnectors

www.allconnectors.de
Tel.: 0049 711 7000303
70754 Hildersbach, Germany

info@allconnectors.de
Fax: 0049 711 7000591
Kettelerstr. 25

TITLE SMA FEMALE SOLDER
FOR RG 402/U(.141")

PART NO. SMA-93V2-TGG

DRAWING NO. SMA 93V2 TGG

DRAWN MARY DATE 96.02.13

CHECKED 黄巧君 DATE

Q.A. 蘇姿潔 DATE

APPROVAL 徐燦霖 DATE

REVISION DATE

DIMENSIONS ARE IN MILLIMETERS

UNLESS OTHERWISE SPECIFIED
TOLERANCE

0.5-5=±0.2 120-315=±1

5-30=±0.4 315-1000=±1.6

30-120±0.6 1000-2000=±2.4

SCALE 4:1 SIZE A

REVISION

DESCRIPTION ENGINEER