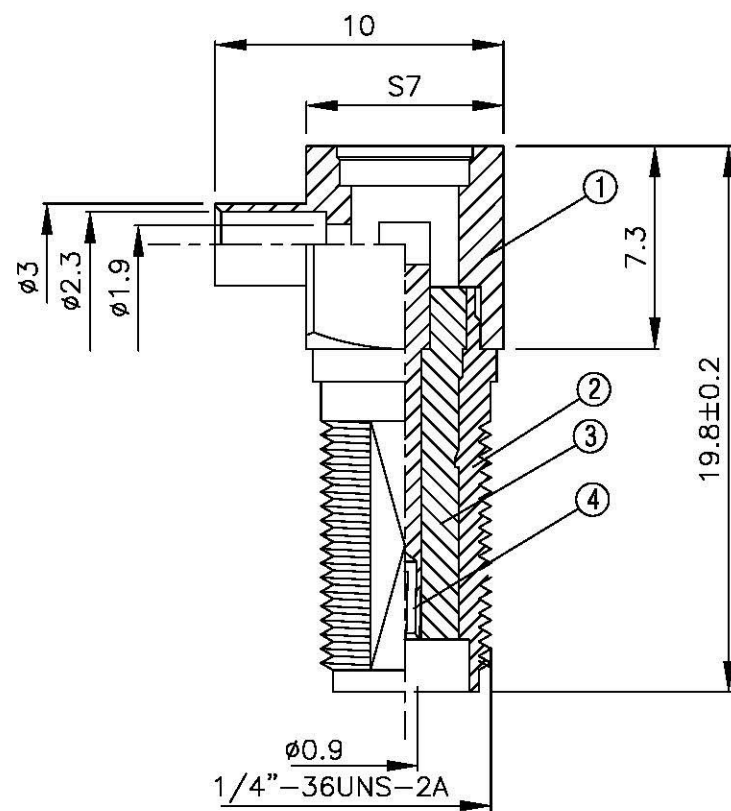
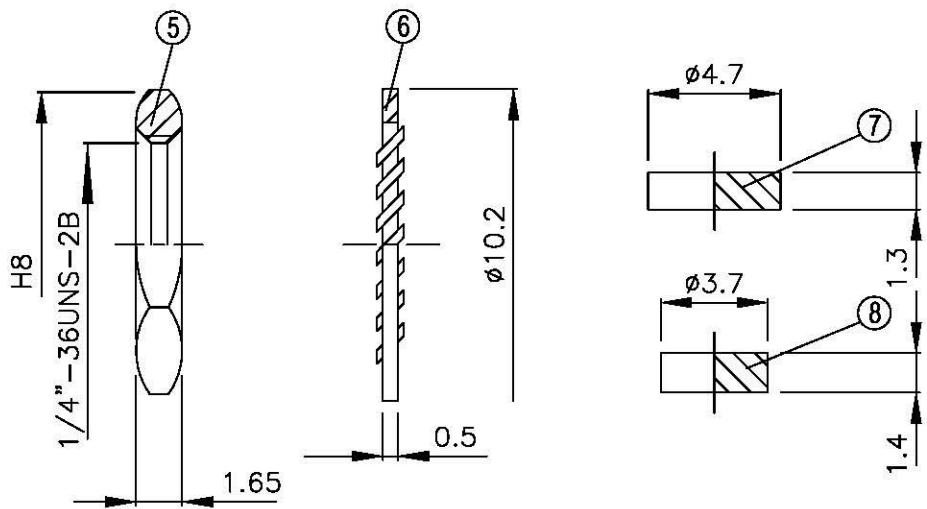
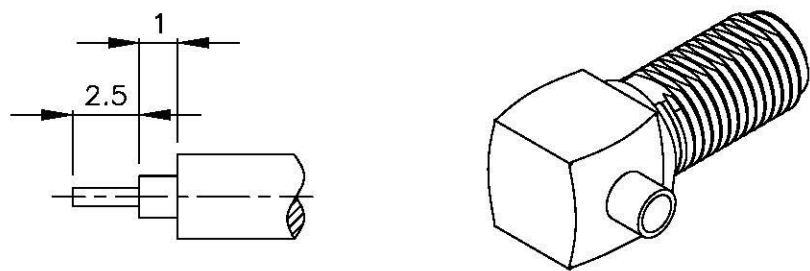


NO	DESCRIPTION	MATERIAL	Q'TY	FINISH	REMARK
1	BODY	BRASS	1	NICKEL	B-SMB0253-G
2	BODY	BRASS	1	NICKEL	B-SMA0145-G
3	INSULATION	TEFLON	1	TEFLON	I-0198T
4	PIN	BE CU	1	GOLD	P-SMA0818-G
5	NUT	BRASS	2	GOLD	N-0006-G
6	WASHER	BRASS	2	GOLD	W-0016-G
7	WASHER	BRASS	1	GOLD	W-0023-G
8	INSULATION	TEFLON	1	TEFLON	I-0136T



**All Connectors**

www.allconnectors.de    info@allconnectors.de  
 Tel: 0049 (0) 39 9509    Fax: 0049 (0) 39 9504  
 70724 Filberstedt - Germany    Kellermeister, 25

**TITLE SMA FEMALE SOLDER FOR RG 405/U(.085")**

**PART NO. SMA-93V1-TGG**

**DRAWING NO. SMA 93V1 TGG**

DRAWN	MARY	DATE	96.02.13
CHECKED	黄巧君	DATE	
Q.A.	蘇姿潔	DATE	
APPROVAL	徐燦霖	DATE	
REVISION		DATE	

DIMENSIONS ARE IN MILLIMETERS			
UNLESS OTHERWISE SPECIFIED TOLERANCE			
0.5-5=±0.2	120-315=±1		
5-30=±0.4	315-1000=±1.6		
30-120±0.6	1000-2000=±2.4		
SCALE	4:1	SIZE	A

REVISION	
DESCRIPTION	ENGINEER