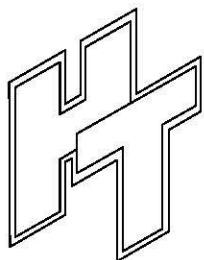
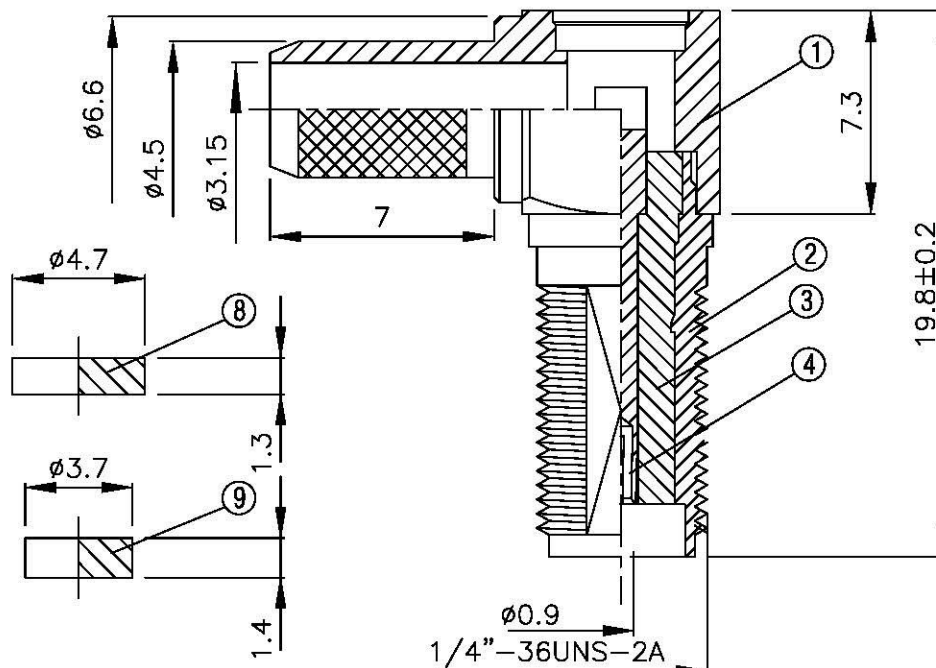
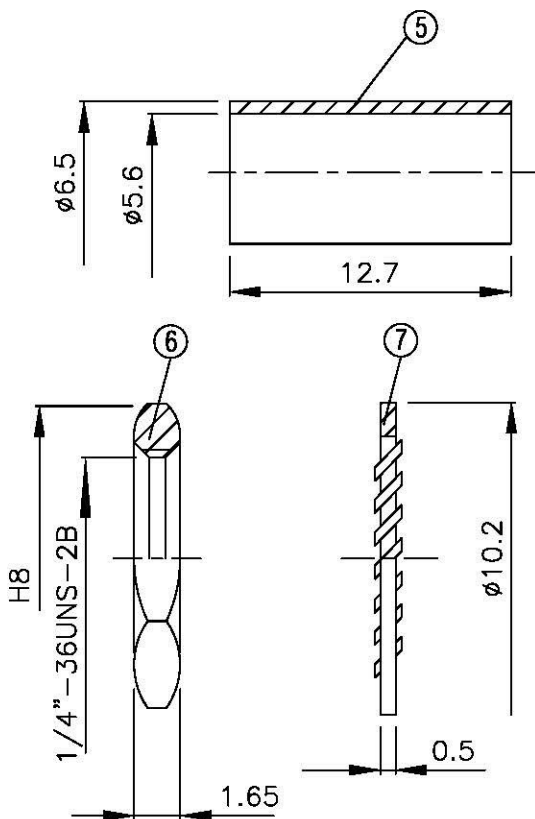
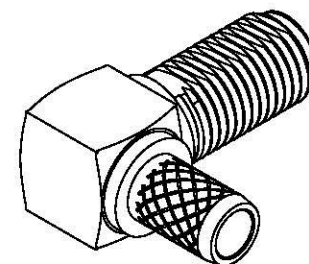
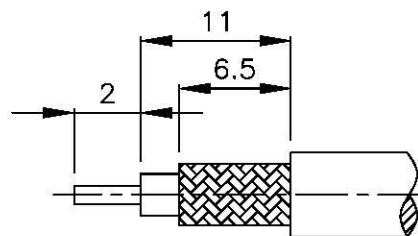


| NO | DESCRIPTION | MATERIAL | Q'TY | FINISH | REMARK |
|----|-------------|----------|------|--------|-------------|
| 1 | BODY | BRASS | 1 | NICKEL | B-SMA0140-N |
| 2 | BODY | BRASS | 1 | NICKEL | B-SMA0145-N |
| 3 | INSULATION | TEFLON | 1 | TEFLON | I-0198T |
| 4 | PIN | BE CU | 1 | GOLD | P-SMA0818-G |
| 5 | RING | BRASS | 1 | NICKEL | R-0007-N |
| 6 | NUT | BRASS | 2 | GOLD | N-0006-N |
| 7 | WASHER | BRASS | 2 | GOLD | W-0016-N |
| 8 | WASHER | BRASS | 1 | GOLD | W-0023-N |
| 9 | INSULATION | TEFLON | 1 | TEFLON | I-0136T |



All Connectors

www.allconnectors.de
tel.: 0049 711 7099007
70724 Filderstadt - Germany

info@allconnectors.de
fax: 0049 711 7099008
Kettnerstr. 25

TITLE
SMA FEMALE CRIMP FOR RG 58/U

PART NO.
SMA-93F-TGN

DRAWING NO. SMA 93F TGN

DRAWN MARY DATE 96.02.12

CHECKED 黄巧君 DATE

Q.A. 蘇姿潔 DATE

APPROVAL 徐燦霖 DATE

REVISION DATE

DIMENSIONS ARE IN MILLIMETERS

UNLESS OTHERWISE SPECIFIED
TOLERANCE

0.5-5=±0.2 120-315=±1

5-30=±0.4 315-1000=±1.6

30-120±0.6 1000-2000=±2.4

SCALE 4:1 SIZE A

REVISION

DESCRIPTION ENGINEER

D

C

B

A

D

C

B

A