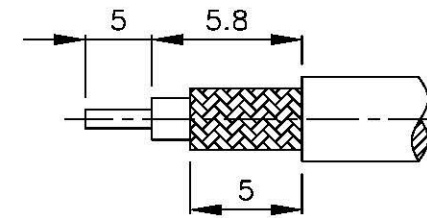
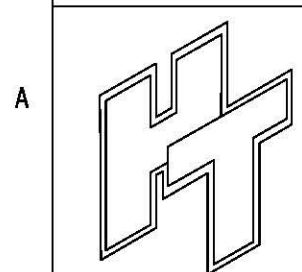
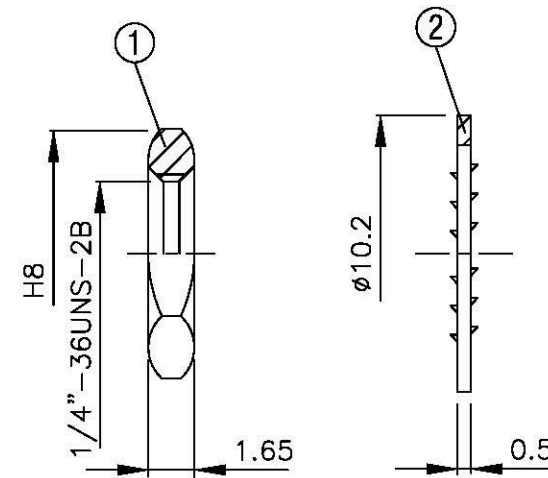
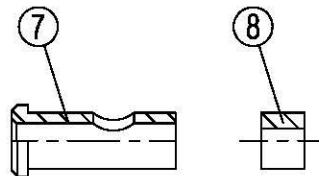
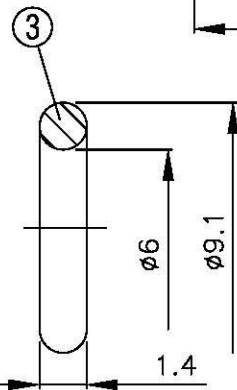
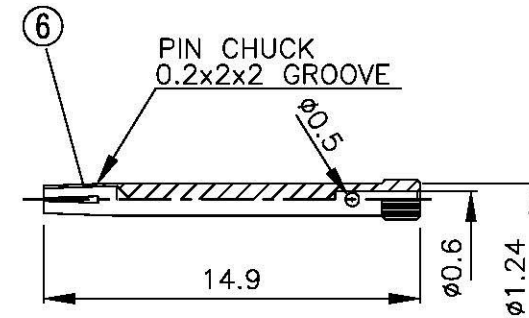
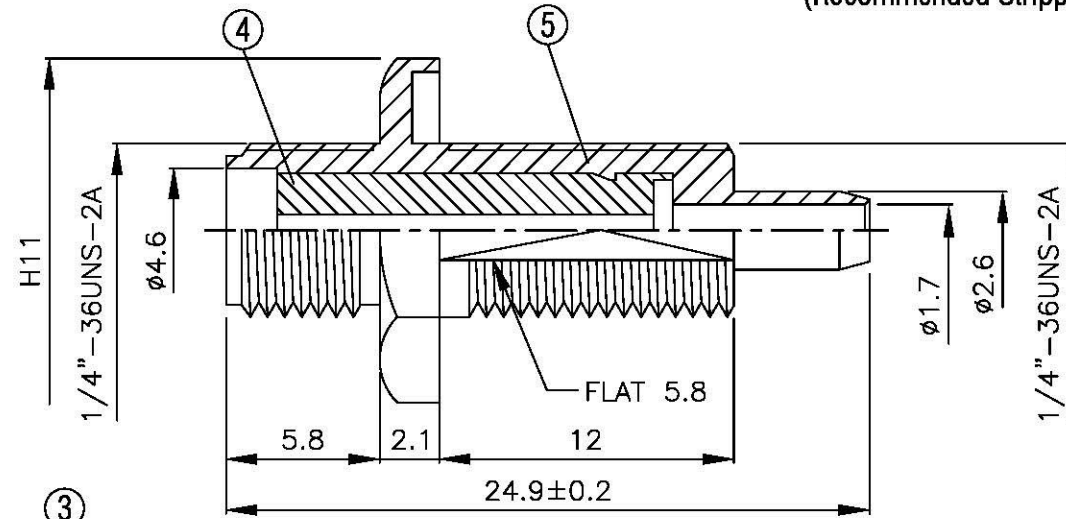
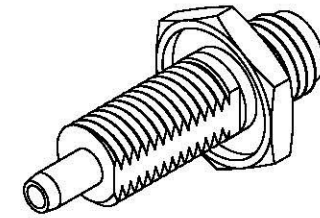


NO	DESCRIPTION	MATERIAL	Q'TY	FINISH	REMARK
1	NUT	BRASS	1	NICKEL	N-0006
2	WASHER	BRASS	1	NICKEL	W-0016
3	GASKET	SI RUBBER	1	RUBBER	RU-0014
4	INSULATION	TEFLON	1	TEFLON	I-0524T
5	BODY	BRASS	1	NICKEL	B-SMA1087-N
6	PIN	BE CU	1	GOLD	P-SMA0758-G
7	RING	BRASS	1	NICKEL	B-SMA0473-N
8	INSULATION2	TEFLON	1	TEFLON	I-0256T



(Recommended Stripping Dimension)



All Connectors
 www.allconnectors.de info@allconnectors.de
 T: +49 949 711 709503 Fax: +49 949 711 709504
 20751 Halderstadt - Germany Kettnerstr. 25

TITLE **SMA FEMALE CRIMP FOR RG-178/U**

PART NO. **SMA-91M-TGN**

DRAWING NO. **SMA 91M TGN**

DRAWN	MARY	DATE	96.08.10
CHECKED	蘇姿潔	DATE	
Q.A.	馮健華	DATE	
APPROVAL	徐燦霖	DATE	
REVISION		DATE	

DIMENSIONS ARE IN MILLIMETERS			
UNLESS OTHERWISE SPECIFIED TOLERANCE			
0.5-5=±0.2	120-315=±1		
5-30=±0.4	315-1000=±1.6		
30-120±0.6	1000-2000=±2.4		
SCALE	4:1	SIZE	A

REVISION	
DESCRIPTION	ENGINEER