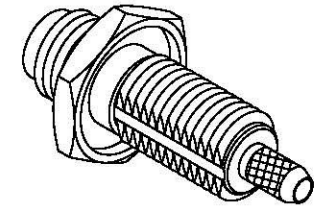
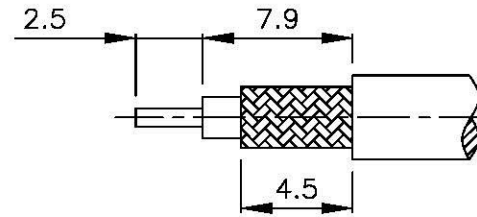
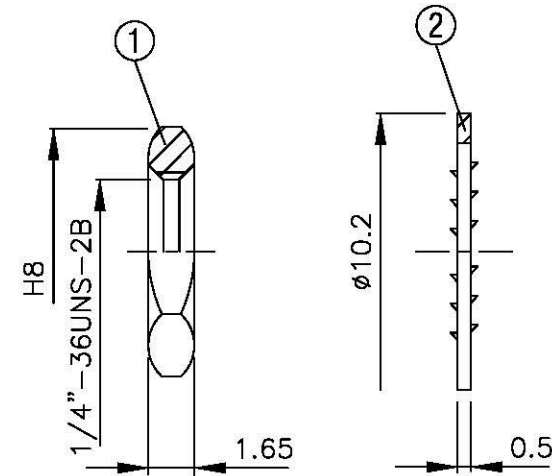
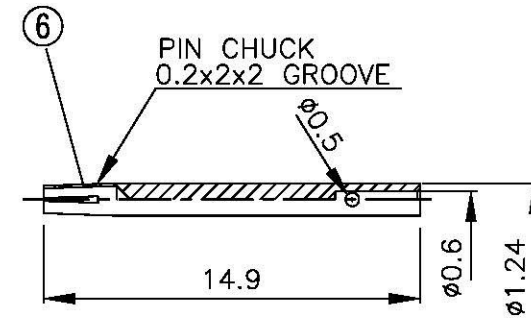
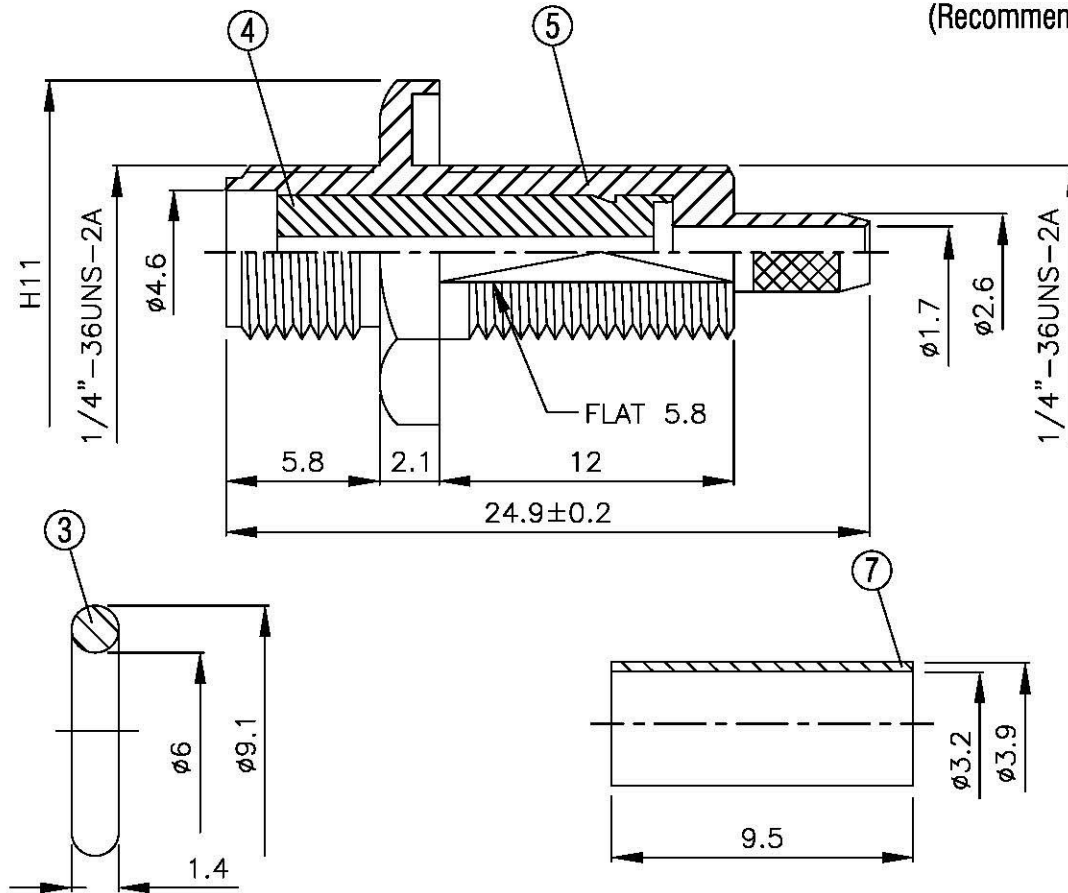


NO	DESCRIPTION	MATERIAL	Q'TY	FINISH	REMARK
1	NUT	BRASS	1	NICKEL	N-0006
2	WASHER	BRASS	1	NICKEL	W-0016
3	GASKET	SI RUBBER	1	RUBBER	RU-0014
4	INSULATION	TEFLON	1	TEFLON	I-0524T
5	BODY	BRASS	1	NICKEL	B-SMA1087-N
6	PIN	BE CU	1	GOLD	P-SMA0758-G
7	RING	BRASS	1	NICKEL	R-0002-N



(Recommended Stripping Dimension)



	All Connectors <small>www.allconnectors.de Tel: 0049 711 7002503 70751 Illerstadt - Germany</small>	DRAWN MARY DATE 95.06.12	DIMENSIONS ARE IN MILLIMETERS		REVISION	
		CHECKED 蘇姿潔 DATE	UNLESS OTHERWISE SPECIFIED TOLERANCE		DESCRIPTION	ENGINEER
	TITLE SMA FEMALE CRIMP FOR RG-316/U	Q.A. 馮健華 DATE	0.5-5=±0.2	120-315=±1		
	PART NO. SMA-91LV1-TGN	APPROVAL 徐燦霖 DATE	5-30=±0.4	315-1000=±1.6		
	DRAWING NO. SMA 91LV1 TGN	REVISION DATE	30-120±0.6	1000-2000=±2.4		
		SCALE 4:1	SIZE A			