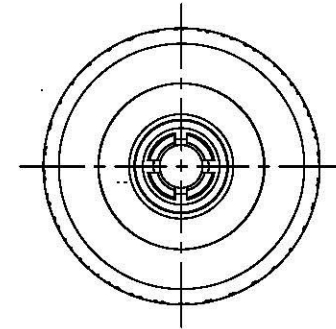
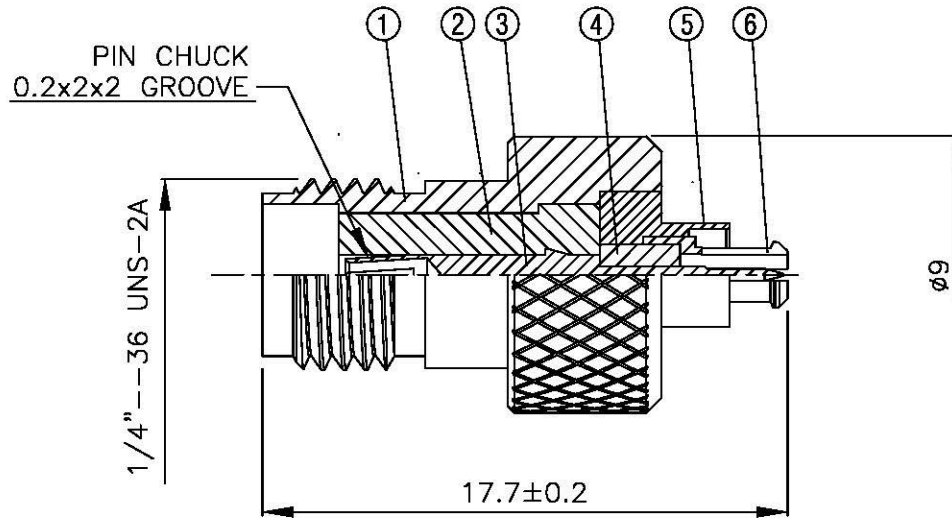
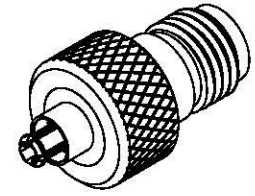


NO	DESCRIPTION	MATERIAL	Q'TY	FINISH	REMARK
1	BODY 1	BRASS	1	GOLD	B-SMA0632-G
2	INSULATION 1	TEFLON	1	TEFLON	I-0286T
3	PIN	BE CU	1	GOLD	P-MCCD0484-G
4	INSULATION 2	TEFLON	1	TEFLON	I-0339T
5	BODY 2	BRASS	1	GOLD	B-MCCD0700-G
6	BODY 2	BE CU	1	GOLD	B-MCCD0300-G



		DRAWN	MARY	DATE	92.08.12	DIMENSIONS ARE IN MILLIMETERS		REVISION			
	<small>www.allconnectors.de Tel.: 0049 714 700500 70791 Filderstadt - Germany</small>	<small>info@allconnectors.de Fax: 0049 714 700504 Kellernstr. 25</small>	CHECKED	黄巧君	DATE						UNLESS OTHERWISE SPECIFIED TOLERANCE
	TITLE		SMA FEMALE - MCCD FEMALE ADAPTOR	Q.A.	蘇姿潔	DATE					
	PART NO.		SMA-76-TGG	APPROVAL	徐燦霖	DATE					
	DRAWING NO.		SMA 76 TGG	REVISION		DATE					
				SCALE	4:1	SIZE	A				

0.5-5=±0.2	120-315=±1
5-30= ±0.4	315-1000=±1.6
30-120±0.6	1000-2000=±2.4