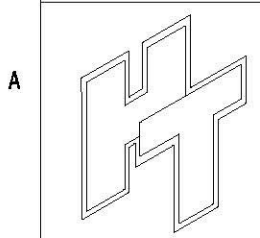
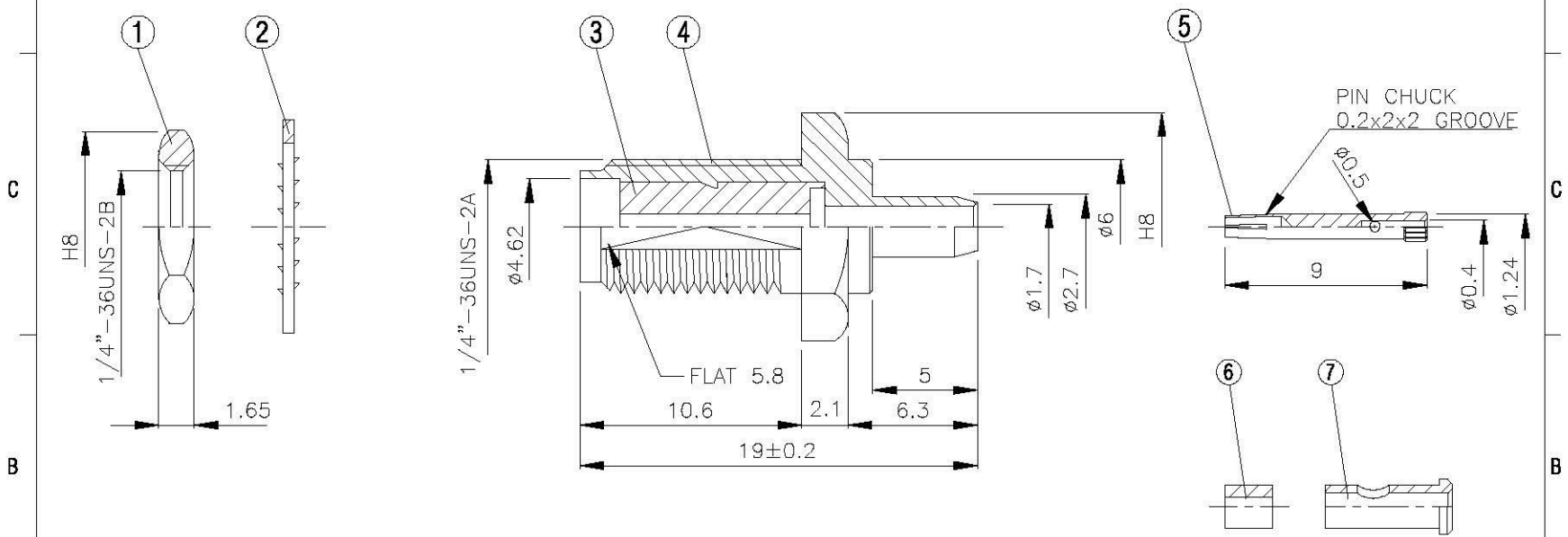
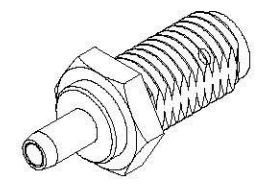
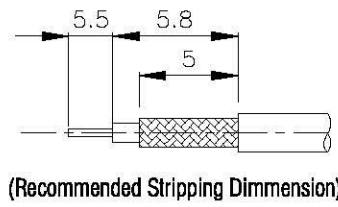


NO	DESCRIPTION	MATERIAL	Q'TY	FINISH	REMARK
1	NUT	BRASS	1	GOLD	N-0006-G
2	WASHER	BRASS	1	GOLD	W-0016-G
3	BODY	BRASS	1	GOLD	B-SMA0904-G
4	INSULATION 1	TEFLON	1	TEFLON	I-0563T
5	PIN	BE CU	1	GOLD	P-SMA0635-G
6	INSULATION 2	TEFLON	1	TEFLON	I-0256T
7	BODY	BRASS	1	GOLD	B-SMA0902-G



Allconnectors
www.allconnectors.de
 49-044711 200904
 49-044711 200904

TITLE SMA FEMALE CRIMP FOR HRS 1.3mm

PART NO. SMA-56U-TGG-1

DRAWING NO. SMA 56U TGG-1

DRAWN MARY

CHECKED 蘇姿潔

Q.A. 馮健華

APPROVA 徐燦霖

REVISION

DATE 98.03.20

DATE

DATE

DATE

DATE

DIMENSIONS ARE IN MILLIMETERS

UNLESS OTHERWISE SPECIFIED TOLERANCE

0.5-5=±0.2	120-315=±1
5-30=±0.4	315-1000=±1.6
30-120±0.6	1000-2000=±2.4

SCALE 4:1 **SIZE** A

REVISION	
DESCRIPTION	ENGINEER

4

3

2

1

A

A