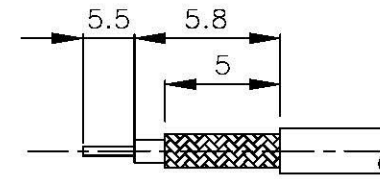
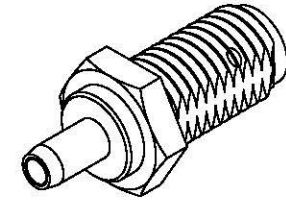


| NO | DESCRIPTION | MATERIAL | Q'TY | FINISH | REMARK |
|----|--------------|----------|------|--------|-------------|
| 1 | NUT | BRASS | 1 | GOLD | N-0006 |
| 2 | WASHER | BRASS | 1 | GOLD | W-0016 |
| 3 | BODY | BRASS | 1 | GOLD | B-SMA0904-G |
| 4 | INSULATION 1 | TEFLON | 1 | TEFLON | I-0563T |
| 5 | PIN | BE CU | 1 | GOLD | P-SMA0635-G |
| 6 | INSULATION 2 | TEFLON | 1 | TEFLON | I-0256T |
| 7 | BODY | BRASS | 1 | GOLD | B-SMA0473-G |



(Recommended Stripping Dimension)



D

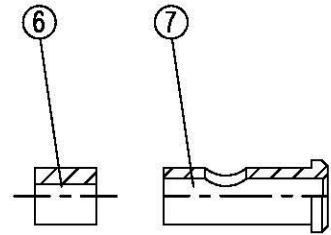
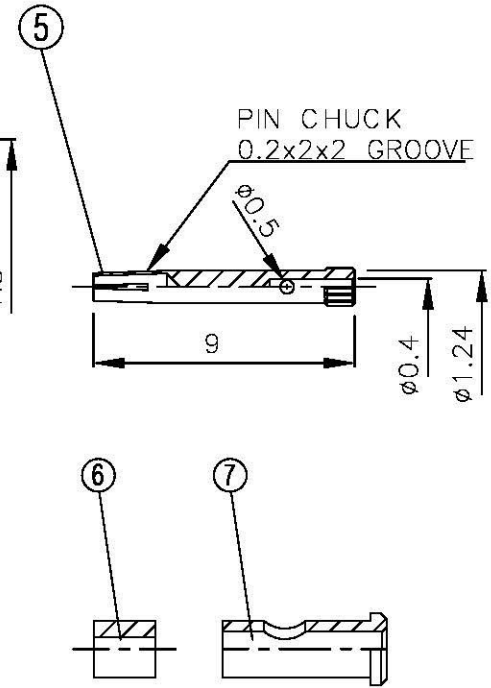
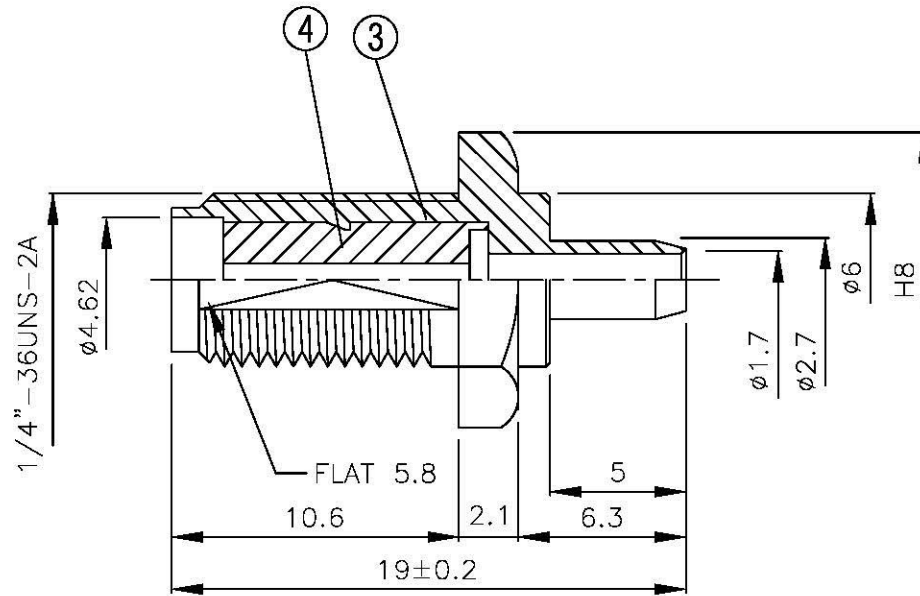
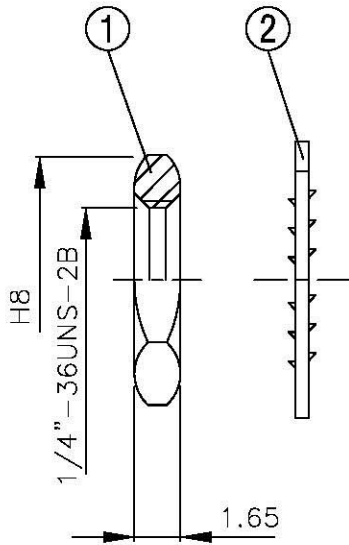
D

C

C

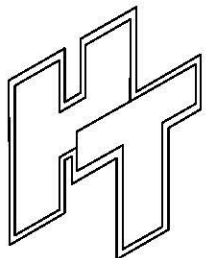
B

B



A

A



All Connectors

www.allconnectors.de
Tel.: 0049 711 7009503
70794 Filberstadt Germany

info@allconnectors.de
Fax: 0049 711 7009504
Kettnerstr. 25

DRAWN MARY DATE 97.02.20

CHECKED 蘇志欣 DATE

Q.A. 蘇姿潔 DATE

APPROVAL 徐燦霖 DATE

REVISION DATE

TITLE SMA FEMALE CRIMP FOR RG-178/U

PART NO. SMA-56M-TGG-1

DRAWING NO. SMA 56M TGG-1

DIMENSIONS ARE IN MILLIMETERS

UNLESS OTHERWISE SPECIFIED TOLERANCE

0.5-5=±0.2 120-315=±1

5-30=±0.4 315-1000=±1.6

30-120±0.6 1000-2000=±2.4

SCALE 4:1 SIZE A

REVISION

DESCRIPTION ENGINEER

4

3

2

1