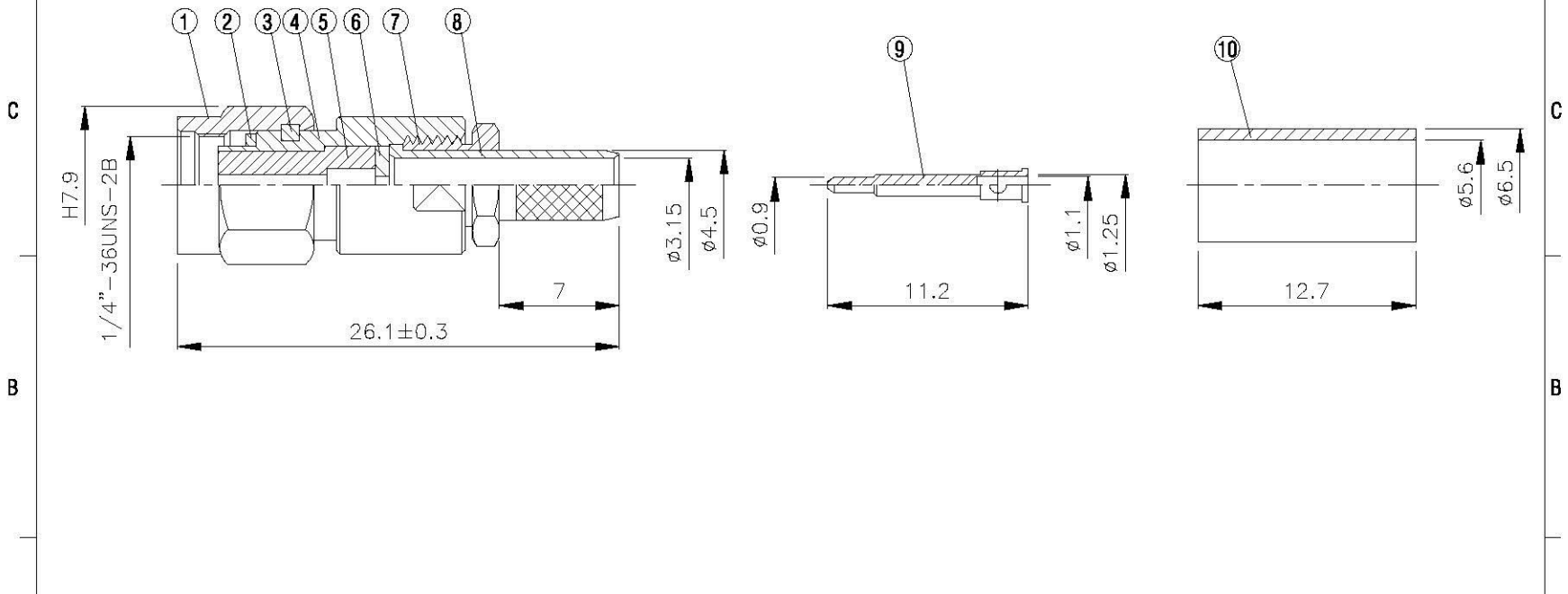
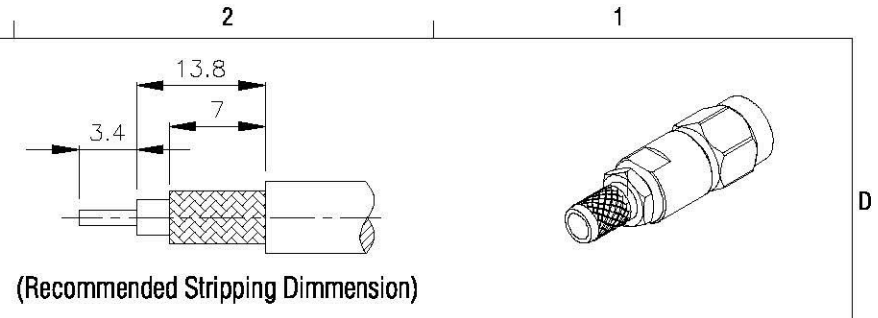
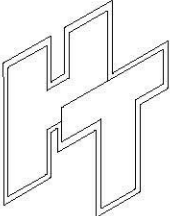







NO	DESCRIPTION	MATERIAL	Q'TY	FINISH	REMARK
1	SHELL	BRASS	1	NICKEL	B-SMA0043-N
2	GASKET	SI RUBBER	1	RUBBER	RU-0008
3	WASHER	STAINLESS	1	STAINLESS	W-0012
4	BODY 1	BRASS	1	NICKEL	B-SMA0371-N
5	INSULATION 1	TEFLON	1	TEFLON	I-0171T
6	INSULATION 2	TEFLON	1	TEFLON	I-0049T
7	NUT	BRASS	1	NICKEL	N-0006-N
8	BODY 2	BRASS	1	NICKEL	B-SMA0234-N
9	PIN	BRASS	1	GOLD	P-SMA0239-G
10	RING	BRASS	1	NICKEL	R-0007-N



		DRAWN 	DATE 97.07.21	DIMENSIONS ARE IN MILLIMETERS		REVISION		
	<small>www.allconnectors.de Tel: 0049 711 7000500 70774 Tübingen - Germany</small>	<small>info@allconnectors.de Fax: 0049 711 7000504 Kettelerstr. 25</small>	CHECKED 	DATE	UNLESS OTHERWISE SPECIFIED TOLERANCE		DESCRIPTION	ENGINEER
	TITLE SMA MALE CRIMP FOR LMR-200		Q.A. 	DATE	0.5-5=±0.2	120-315=±1		
	PART NO. SMA-52S1-TGN		APPROVAL 	DATE	5-30=±0.4	315-1000=±1.6		
	DRAWING NO. SMA 52S1 TGN		REVISION	DATE	30-120±0.6	1000-2000=±2.4		
				SCALE	4:1	SIZE	A	