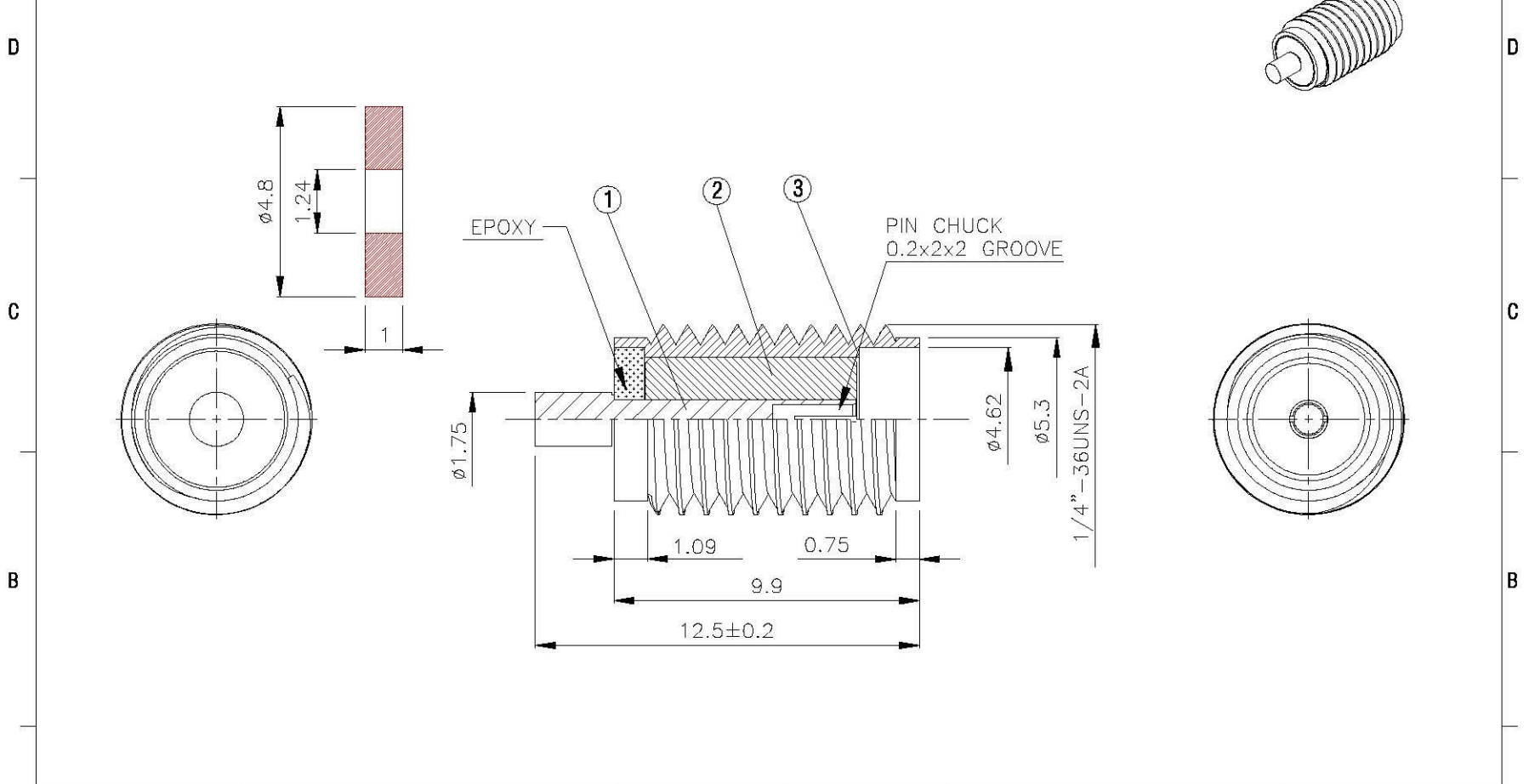


| NO | DESCRIPTION | MATERIAL | Q'TY | FINISH | REMARK |
|----|-------------|----------|------|------------|---------------|
| 1 | PIN | BE CU | 1 | GOLD | P-SMA0906-G |
| 2 | INSULATION | TEFLON | 1 | TEFLON | I-0619T |
| 3 | BODY | SUS303 | | PASSIVATED | B-SMA1304-SUS |



| | | | | | | |
|---|---|---------------------------------------|---|------------------|--------------------|-----------------|
|  | All Connectors <small>www.allconnectors.de +49 89 41 01 40 15 00 70794 Filderstadt, Germany</small> | DRAWN 蘇志欣 DATE 97.06.14 | DIMENSIONS ARE IN MILLIMETERS | | REVISION | |
| | TITLE SMA FEMALE TERMINATOR | CHECKED 蘇姿潔 DATE | UNLESS OTHERWISE SPECIFIED TOLERANCE | | DESCRIPTION | ENGINEER |
| | PART NO. SMA-48V6-TGSUS | Q.A. 莊千慧 DATE | 0.5-5=±0.2 120-315=±1 | | | |
| | DRAWING NO. SMA 48V6 TGSUS | APPROVAL 徐燦霖 DATE | 5-30=±0.4 315-1000=±1.6 | | | |
| | | REVISION DATE | 30-120±0.6 1000-2000=±2.4 | SCALE 4:1 | SIZE A | |