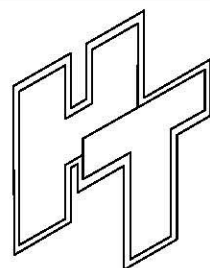
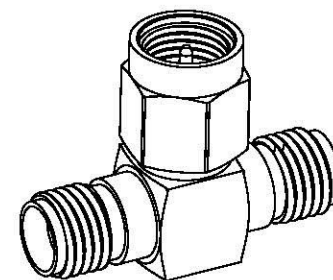
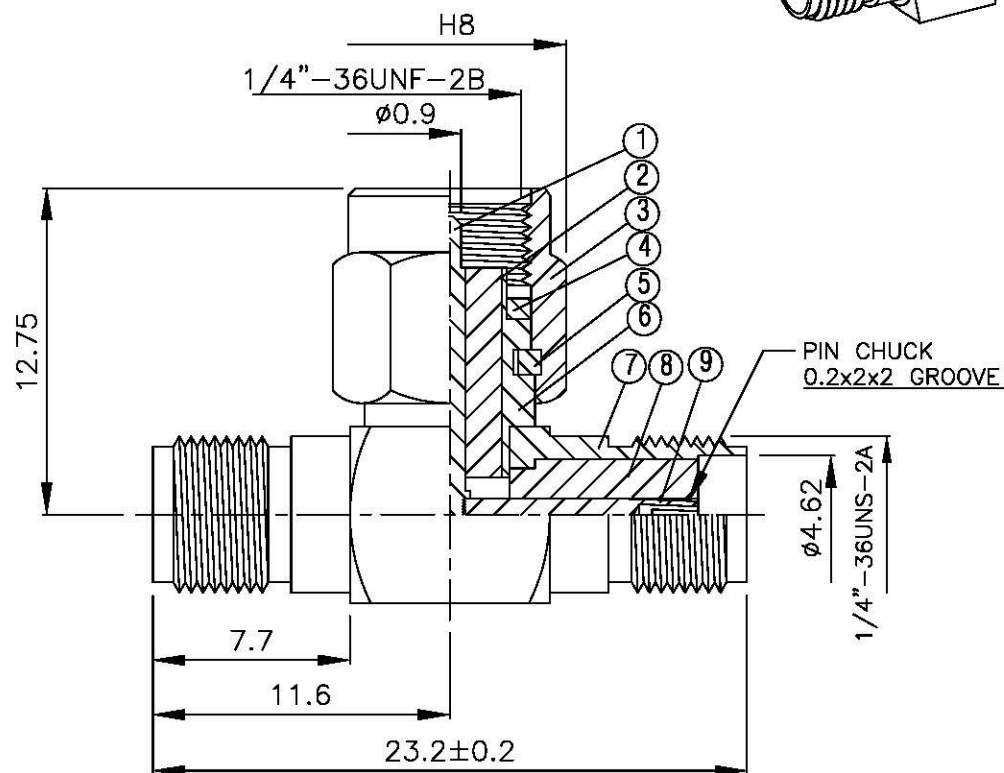
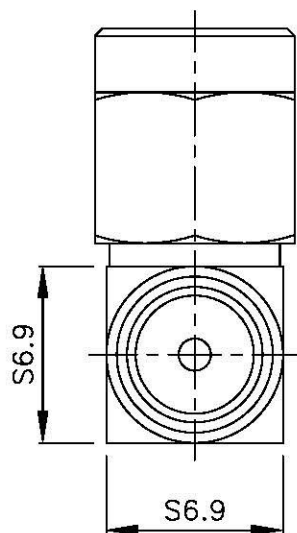


NO	DESCRIPTION	MATERIAL	Q'TY	FINISH	REMARK
1	PIN	BRASS	1	GOLD	P-SMA0262-G
2	INSULATION 1	TEFLON	1	TEFLON	I-0126T
3	SHELL	BRASS	1	NICKEL	B-SMA0043-N
4	GASKET	SI RUBBER	1	RUBBER	RU-0008
5	WASHER	PH.BRONZE	1	NICKEL	W-0012
6	BODY 1	BRASS	1	NICKEL	B-SMA0154-N
7	BODY 2	BRASS	1	NICKEL	B-SMA0141-N
8	INSULATION 2	TEFLON	2	TEFLON	I-0197T
9	PIN	BRASS	1	GOLD	P-SMA0091-G



**All Connectors**

www.allconnectors.de  
Tel.: 0944 711 309335  
info@allconnectors.de  
Fax: 0944 711 309504  
Kollmutterstr. 25

**TITLE** SMA FEMALE-MALE-FEMALE  
T ADAPTOR

**PART NO.** SMA-46-TGN

**DRAWING NO.** SMA 46 TGN

**DRAWN** MARY

**DATE** 96.03.21

**CHECKED** 蘇姿潔

**DATE**

**Q.A.** 馮健華

**DATE**

**APPROVAL** 徐燦霖

**DATE**

**REVISION**

**DATE**

**DIMENSIONS ARE IN MILLIMETERS**

**UNLESS OTHERWISE SPECIFIED  
TOLERANCE**

0.5-5=±0.2	120-315=±1
5-30=±0.4	315-1000=±1.6
30-120±0.6	1000-2000=±2.4

**SCALE** 4:1 **SIZE** A

**REVISION**

DESCRIPTION	ENGINEER
-------------	----------

--	--

--	--

--	--