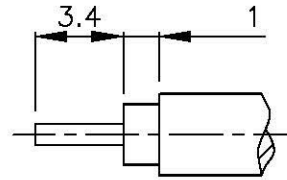
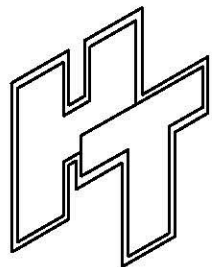
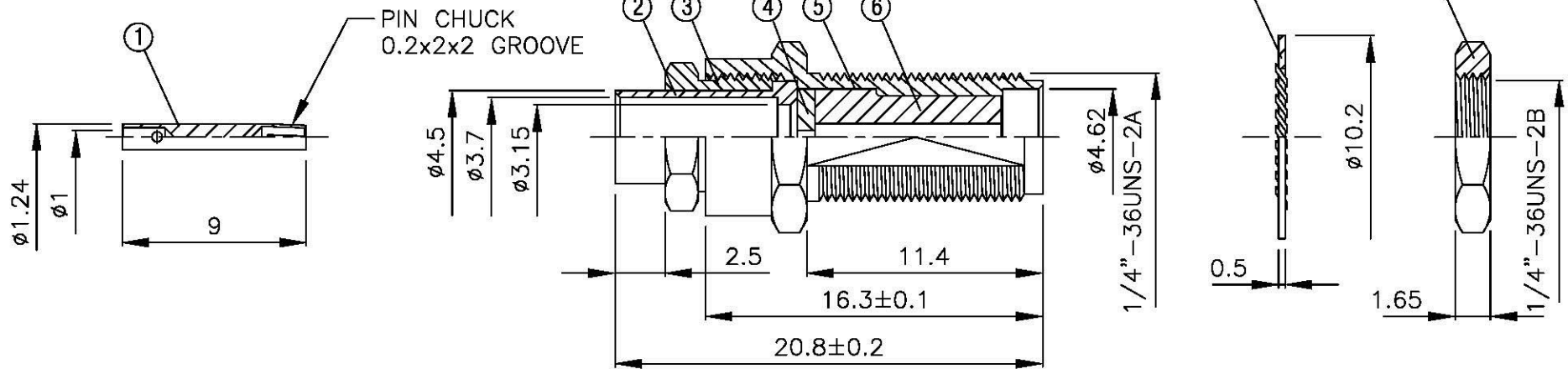
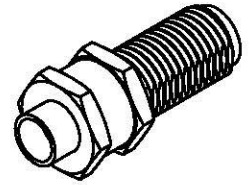


NO	DESCRIPTION	MATERIAL	Q'TY	FINISH	REMARK
1	PIN	BE CU	1	GOLD	P-SMA0057-G
2	BODY 1	BRASS	1	GOLD	B-SMA0237-G
3	NUT 1	BRASS	1	GOLD	N-0020-G
4	INSULATION 1	TEFLON	1	TEFLON	I-0049T
5	BODY 2	BRASS	1	GOLD	B-SMA0232-G
6	INSULATION 2	TEFLON	1	TEFLON	I-0046T
7	WASHER	BRASS	1	GOLD	W-0016
8	NUT 2	BRASS	1	GOLD	N-0006-G



(Recommended Stripping Dimension)



All Connectors

www.allconnectors.de
Tel. 0049 711 7075205
70794 Hohenstadt, Germany

info@allconnectors.de
Fax. 0049 711 7075204
Kellernstr. 22

TITLE SMA FEMALE SOLDER
FOR RG402 (.141)

PART NO. SMA-44V2-TGG

DRAWING NO. SMA 44V2 TGG

DRAWN MARY DATE 96.03.29

CHECKED 黄巧君 DATE

Q.A. 蘇姿潔 DATE

APPROVAL 徐燦霖 DATE

REVISION DATE

DIMENSIONS ARE IN MILLIMETERS

UNLESS OTHERWISE SPECIFIED
TOLERANCE

0.5-5 = ± 0.2 120-315 = ± 1

5-30 = ± 0.4 315-1000 = ± 1.6

30-120 ± 0.6 1000-2000 = ± 2.4

SCALE 4:1 SIZE A

REVISION

DESCRIPTION	ENGINEER