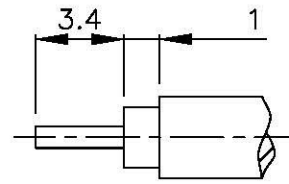
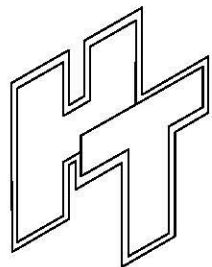
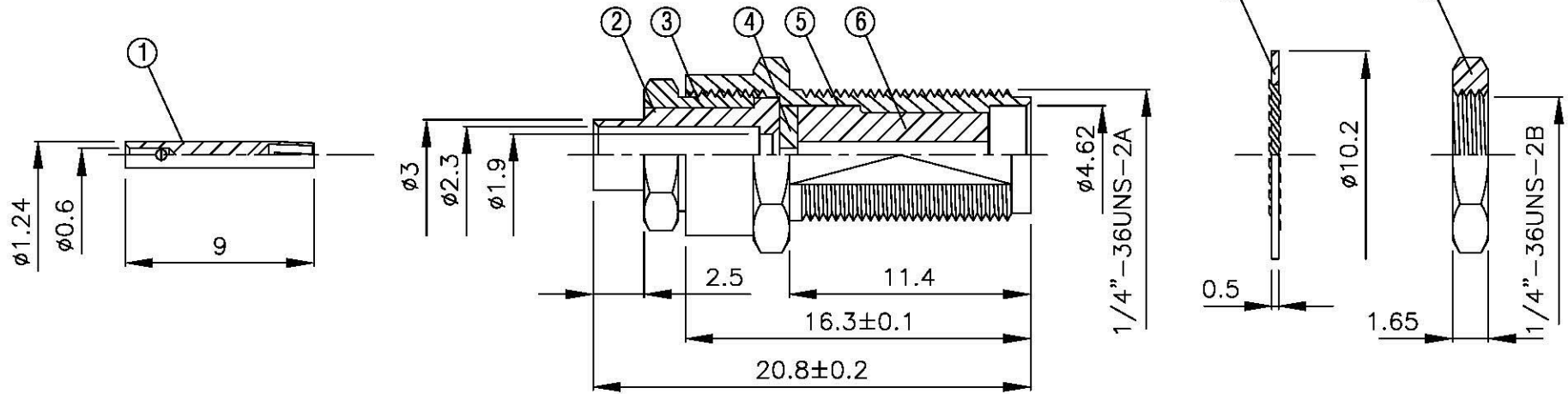
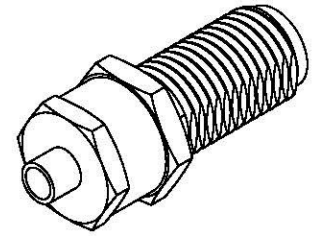


NO	DESCRIPTION	MATERIAL	Q'TY	FINISH	REMARK
1	PIN	BRASS	1	GOLD	P-SMA0056-G
2	BODY 1	BRASS	1	GOLD	B-SMA0236-G
3	NUT 1	BRASS	1	GOLD	N-0020-G
4	INSULATION 1	TEFLON	1	TEFLON	I-0049T
5	BODY 2	BRASS	1	GOLD	B-SMA0232-G
6	INSULATION 2	TEFLON	1	TEFLON	I-0046T
7	WASHER	BRASS	1	GOLD	W-0016
8	NUT 2	BRASS	1	GOLD	N-0006-G



(Recommended Stripping Dimension)



All Connectors

www.allconnectors.de
 TEL: 0940 731 7000002
 20794 Fildorfschtr. Germany

info@allconnectors.de
 FAX: 0940 731 7000004
 allconnectors.de

TITLE SMA FEMALE SOLDER FOR FOR RG405(.085)

PART NO. SMA-44V1-TGG

DRAWING NO. SMA 44V1 TGG

DRAWN MARY DATE 96.03.15

CHECKED 蘇姿潔 DATE

Q.A. 馮健華 DATE

APPROVAL 徐燦霖 DATE

REVISION DATE

DIMENSIONS ARE IN MILLIMETERS

UNLESS OTHERWISE SPECIFIED TOLERANCE

0.5-5=±0.2 120-315=±1

5-30=±0.4 315-1000=±1.6

30-120±0.6 1000-2000=±2.4

SCALE 4:1 SIZE A

REVISION

DESCRIPTION ENGINEER