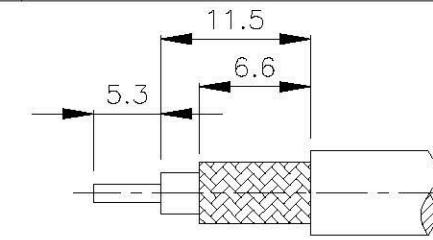
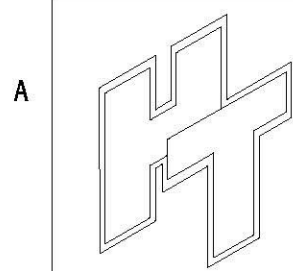
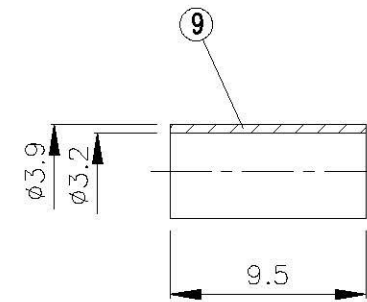
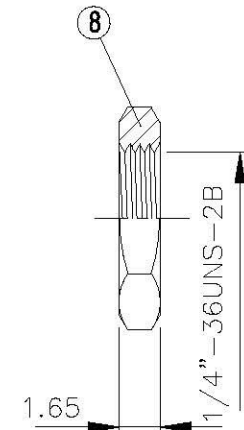
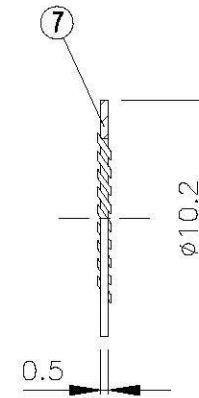
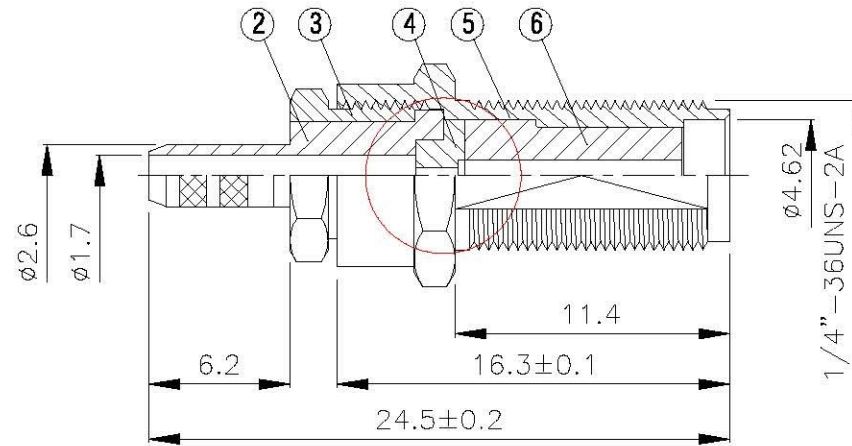
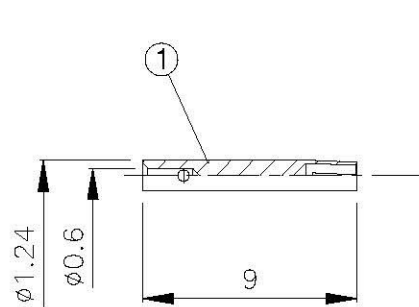
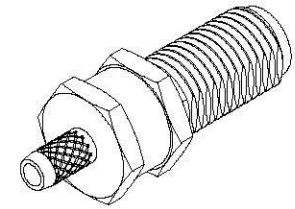


NO	DESCRIPTION	MATERIAL	Q'TY	FINISH	REMARK
1	PIN	BE CU	1	GOLD	P-SMA0056-G
2	BODY 1	BRASS	1	NICKEL	B-SMA0233-N
3	NUT 1	BRASS	1	NICKEL	N-0020-N
4	INSULATION 1	TEFLON	1	TEFLON	I-0047T
5	BODY 2	BRASS	1	NICKEL	B-SMA0232-N
6	INSULATION 2	TEFLON	1	TEFLON	I-0046T
7	WASHER	BRASS	1	NICKEL	W-0016-N
8	NUT 2	BRASS	1	NICKEL	N-0006-N
9	RING	BRASS	1	NICKEL	R-0002-N



(Recommended Stripping Dimension)



All Connectors

www.allconnectors.de
Tel: +49 7031 7000-0
20231 Ulm/Markt - Germany

Info@allconnectors.de
Fax: +49 7031 7000-10
Kette-Markt, 20

TITLE SMA FEMALE CRIMP FOR RG316U

PART NO. SMA-44LV1-TGN

DRAWING NO. SMA-44LV1-TGN

DRAWN MARY DATE 96.03.19

CHECKED 蘇志欣 DATE

Q.A. 蘇姿潔 DATE

APPROVAL 徐燦霖 DATE

REVISION DATE

DIMENSIONS ARE IN MILLIMETERS

UNLESS OTHERWISE SPECIFIED TOLERANCE

0.5-5=±0.2 120-315=±1

5-30= ±0.4 315-1000=±1.6

30-120±0.6 1000-2000=±2.4

SCALE 4:1 SIZE A

REVISION

DESCRIPTION ENGINEER