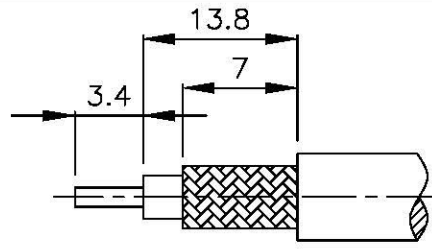
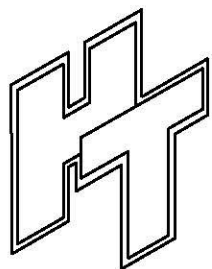
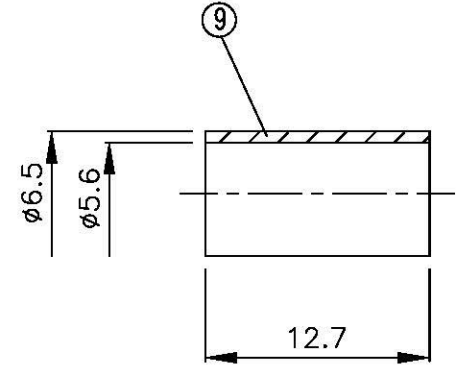
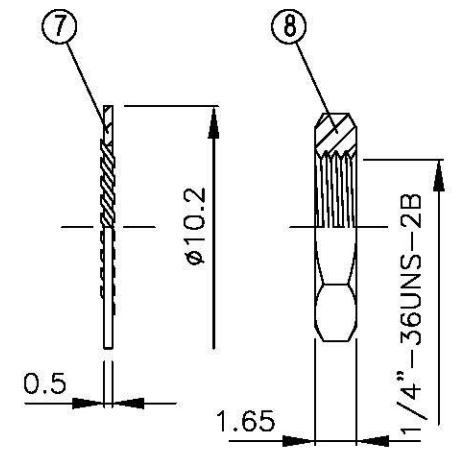
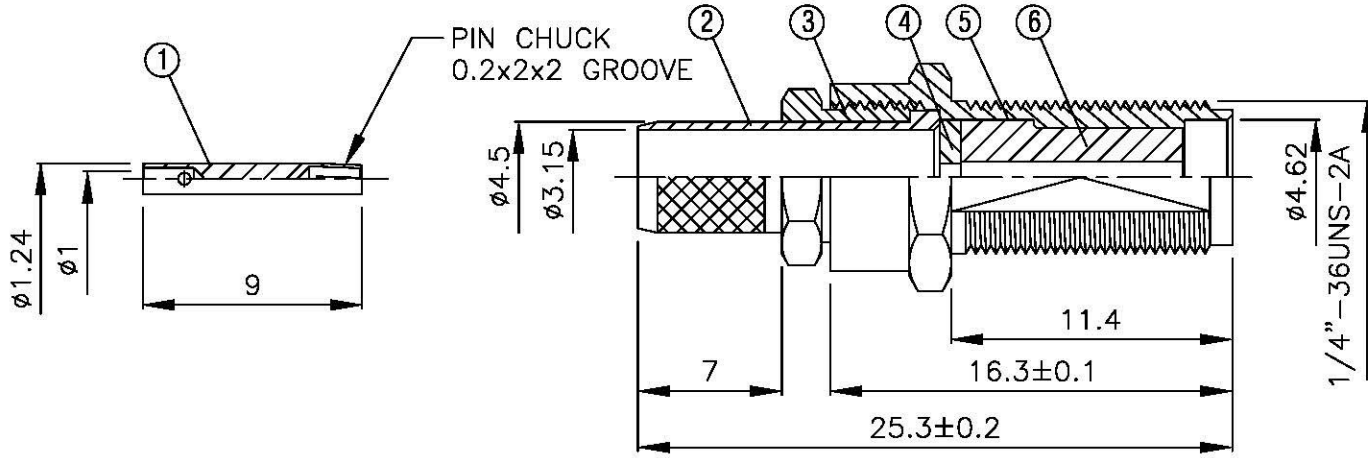
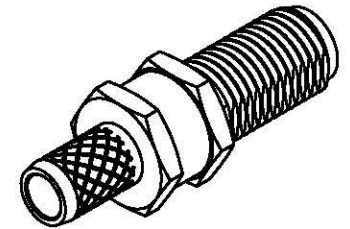


NO	DESCRIPTION	MATERIAL	Q'TY	FINISH	REMARK
1	PIN	BE CU	1	GOLD	P-SMA0057-G
2	BODY 1	BRASS	1	GOLD	B-SMA0234-G
3	NUT 1	BRASS	1	GOLD	N-0020-G
4	INSULATION 1	TEFLON	1	TEFLON	I-0049T
5	BODY 2	BRASS	1	GOLD	B-SMA0232-G
6	INSULATION 2	TEFLON	1	TEFLON	I-0046T
7	WASHER	BRASS	1	GOLD	W-0016
8	NUT 2	BRASS	1	GOLD	N-0006-G
9	RING	BRASS	GOLD	R-0007-G	



(Recommended Stripping Dimension)



**All Connectors**  
 www.allconnectors.de info@allconnectors.de  
 Tel: 0049 731 4002600 Fax: 0049 731 4002601  
 70774 Plochingen - Germany Karlsruhe, DE

TITLE SMA FEMALE CRIMP FOR RG58/U

PART NO. SMA-44F-TGG

DRAWING NO. SMA 44F TGG

DRAWN	MARY	DATE	96.03.15
CHECKED	黄巧君	DATE	
Q.A.	蘇姿潔	DATE	
APPROVAL	徐燦霖	DATE	
REVISION		DATE	

DIMENSIONS ARE IN MILLIMETERS			
UNLESS OTHERWISE SPECIFIED TOLERANCE			
0.5-5=±0.2	120-315=±1		
5-30=±0.4	315-1000=±1.6		
30-120±0.6	1000-2000=±2.4		

SCALE 4:1 SIZE A

REVISION	
DESCRIPTION	ENGINEER