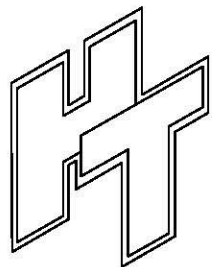
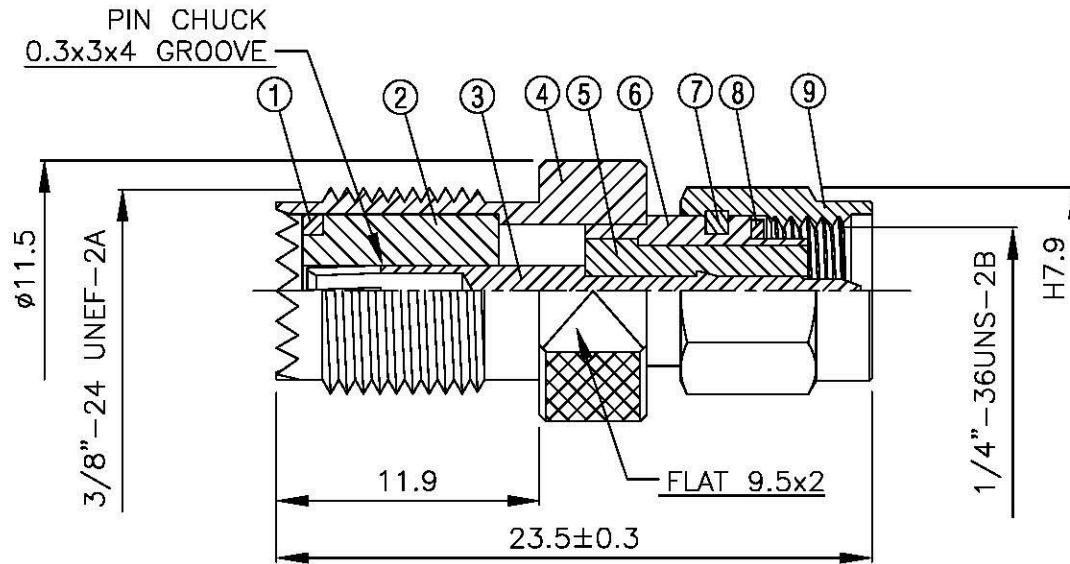
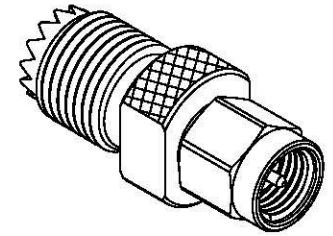


| NO | DESCRIPTION | MATERIAL | Q'TY | FINISH | REMARK |
|----|--------------|-----------|------|---------|-------------|
| 1 | WASHER | BRASS | 1 | NICKEL | W-0039-N |
| 2 | INSULATION 1 | DELTRIN | 1 | DELTRIN | I-0144D |
| 3 | PIN | BRASS | 1 | GOLD | P-SMA0470-G |
| 4 | BODY 1 | BRASS | 1 | NICKEL | B-MU0565-N |
| 5 | INSULATION 2 | TEFLON | 1 | TEFLON | I-0126T |
| 6 | BODY 2 | BRASS | 1 | NICKEL | B-SMA0154-N |
| 7 | WASHER | PH.BRONZE | 1 | NICKEL | W-0012 |
| 8 | RUBBER | SI RUBBER | 1 | RUBBER | RU-0008 |
| 9 | BODY 3 | BRASS | 1 | NICKEL | B-SMA0043-N |



All Connectors
 www.allconnectors.de
 Tel.: 0049 711 7005803
 70754 Hilderstraße - Germany
 info@allconnectors.de
 Fax: 0049 711 700504
 Kettnerstr. 25

TITLE SMA MALE - Mini UHF FEMALE ADAPTOR

PART NO. SMA-35-TGN

DRAWING NO. SMA 35 TGN

| | | | |
|----------|------|------|----------|
| DRAWN | MARY | DATE | 96.03.29 |
| CHECKED | 黃巧君 | DATE | |
| Q.A. | 蘇姿潔 | DATE | |
| APPROVAL | 徐燦霖 | DATE | |
| REVISION | | DATE | |

| | | | |
|--------------------------------------|----------------|------|---|
| DIMENSIONS ARE IN MILLIMETERS | | | |
| UNLESS OTHERWISE SPECIFIED TOLERANCE | | | |
| 0.5-5=±0.2 | 120-315=±1 | | |
| 5-30=±0.4 | 315-1000=±1.6 | | |
| 30-120±0.6 | 1000-2000=±2.4 | | |
| SCALE | 4:1 | SIZE | A |

| | |
|-------------|----------|
| REVISION | |
| DESCRIPTION | ENGINEER |
| | |
| | |
| | |