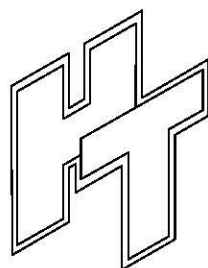
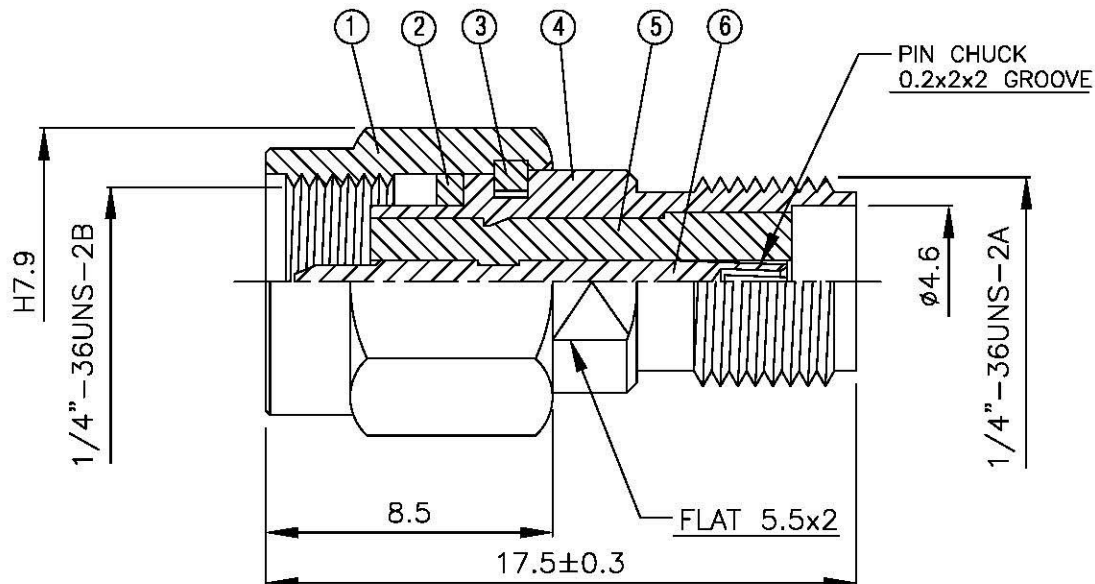
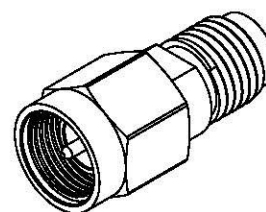


| NO | DESCRIPTION | MATERIAL | Q'TY | FINISH | REMARK |
|----|-------------|------------|------|--------|-------------|
| 1 | SHELL | BRASS | 1 | NICKEL | B-SMA0043-N |
| 2 | GASKET | SI RUBBER | 1 | RUBBER | RU-0008 |
| 3 | WASHER | PH. BRONZE | 1 | NICKEL | W-0012 |
| 4 | BODY | BRASS | 1 | NICKEL | B-SMA0365-N |
| 5 | INSULATION | TEFLON | 1 | TEFLON | I-0139T |
| 6 | PIN | BE CU | 1 | GOLD | P-SMA0235-G |



All Connectors
 10000, 100000, 1000000
 10000000, 100000000, 1000000000

TITLE SMA MALE-SMA FEMALE ADAPTOR

PART NO. SMA-16-TGN

DRAWING NO. SMA 16 TGN

DRAWN MARY

DATE 96.03.21

CHECKED 蘇姿潔

DATE

Q.A. 馮健華

DATE

APPROVAL 徐燦霖

DATE

REVISION

DATE

DIMENSIONS ARE IN MILLIMETERS

UNLESS OTHERWISE SPECIFIED TOLERANCE

| | |
|------------|----------------|
| 0.5-5=±0.2 | 120-315=±1 |
| 5-30=±0.4 | 315-1000=±1.6 |
| 30-120±0.6 | 1000-2000=±2.4 |

SCALE 4:1 SIZE A

REVISION

| DESCRIPTION | ENGINEER |
|-------------|----------|
| | |
| | |
| | |