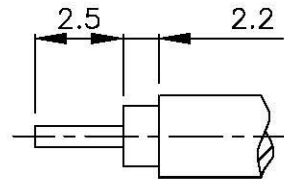
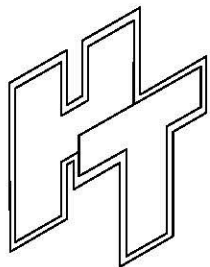
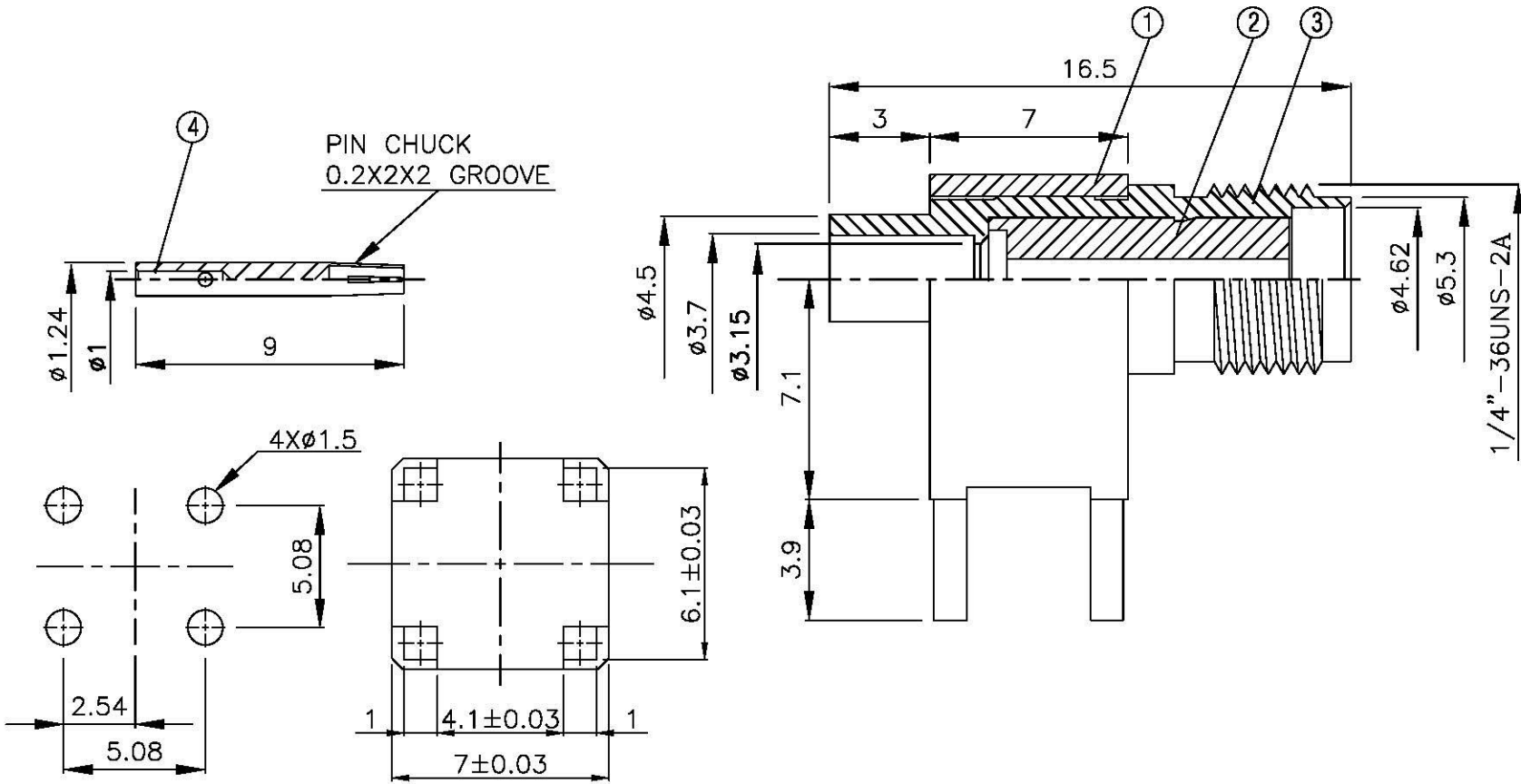
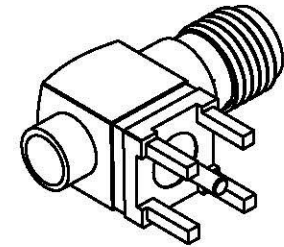


| NO | DESCRIPTION  | MATERIAL | Q'TY | FINISH | REMARK      |
|----|--------------|----------|------|--------|-------------|
| 1  | BODY 1       | BRASS    | 1    | NICKEL | B-SMA0971-G |
| 2  | INSULATION 1 | TEFLON   | 1    | TEFLON | I-0131T     |
| 3  | BODY 2       | BRASS    | 1    | NICKEL | B-SMA0981-G |
| 4  | PIN          | BRASS    | 1    | GOLD   | P-SMA0057-G |



(Recommended Stripping Dimension)



**All Connectors**  
 www.allconnectors.de  
 info@allconnectors.de  
 Tel: 0049 711 7002001  
 Fax: 0049 711 7002004  
 20254 Allfriedstraße, Germany

TITLE SMA FEMALE CRIMP FOR RG-402/U(.141)  
 PART NO. SMA-11V2-TGG  
 DRAWING NO. SMA-11V2-TGG

DRAWN MARY DATE 96.03.15  
 CHECKED 蘇姿潔 DATE 96.03.15  
 Q.A. 馮健華 DATE  
 APPROVAL 徐燦霖 DATE  
 REVISION DATE

DIMENSIONS ARE IN MILLIMETERS  
 UNLESS OTHERWISE SPECIFIED TOLERANCE  
 0.5-5=±0.2 120-315=±1  
 5-30=±0.4 315-1000=±1.6  
 30-120±0.6 1000-2000=±2.4  
 SCALE 4:1 SIZE A

| REVISION    |          |
|-------------|----------|
| DESCRIPTION | ENGINEER |
|             |          |
|             |          |
|             |          |