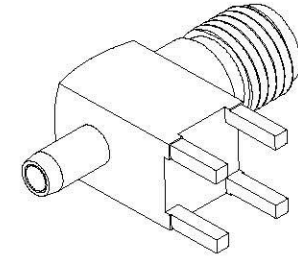
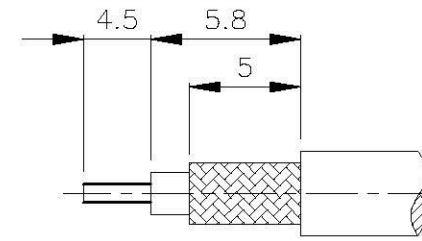
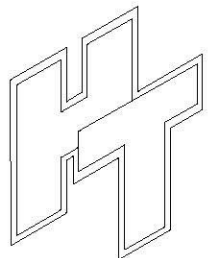
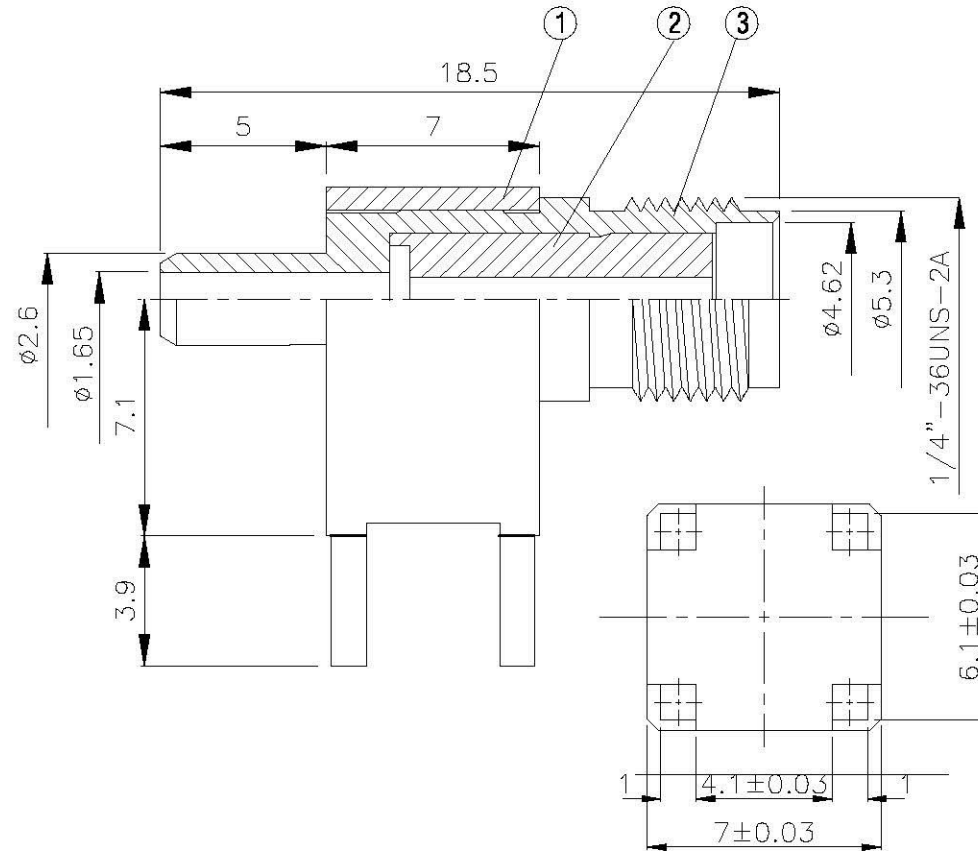
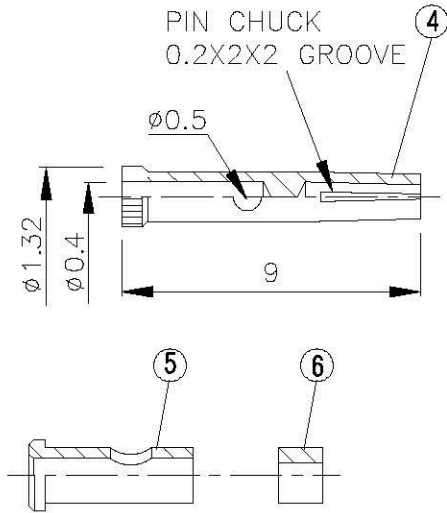


NO	DESCRIPTION	MATERIAL	Q'TY	FINISH	REMARK
1	BODY 1	BRASS	1	NICKEL	B-SMA0971-G
2	INSULATION 1	TEFLON	1	TEFLON	I-0131T
3	BODY 2	BRASS	1	NICKEL	B-SMA0972-G
4	PIN	BRASS	1	GOLD	P-SMA0635-G
5	BODY 3	BRASS	1	GOLD	B-SMA0902-G
6	INSULATION 2	TEFLON	1	TEFLON	I-0470T



(Recommended Stripping Dimension)



All Connectors

www.allconnectors.com
Tel.: 0049 711 7009503
70784 Filzdeckel - Germany

info@allconnectors.com
Fax: 0049 711 7009504
Ketheimerstr. 25

TITLE SMA FEMALE CRIMP
FOR C-1.32mm CABLE

PART NO. SMA-11U-TGG

DRAWING NO. SMA-11U-TGG

DRAWN MARY DATE 96.03.15

CHECKED 蘇姿潔 DATE

Q.A. 馮健華 DATE

APPROVAL 徐燦霖 DATE

REVISION DATE

DIMENSIONS ARE IN MILLIMETERS

UNLESS OTHERWISE SPECIFIED
TOLERANCE

0.5-5=±0.2 120-315=±1

5-30=±0.4 315-1000=±1.6

30-120±0.6 1000-2000=±2.4

SCALE 4:1 SIZE A

REVISION

DESCRIPTION ENGINEER

D

C

B

A

D

C

B

A

4

3

2

1