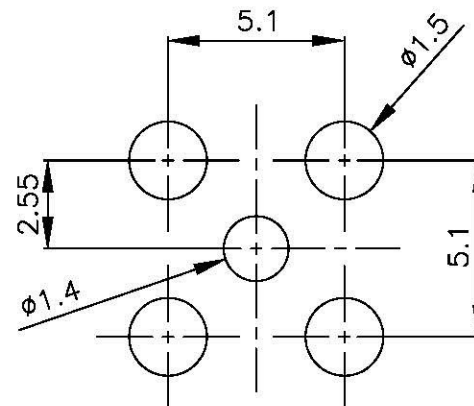
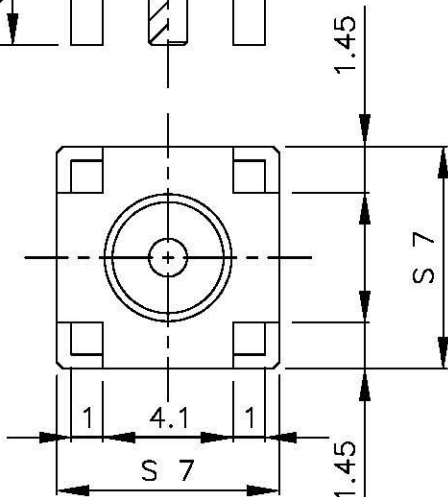
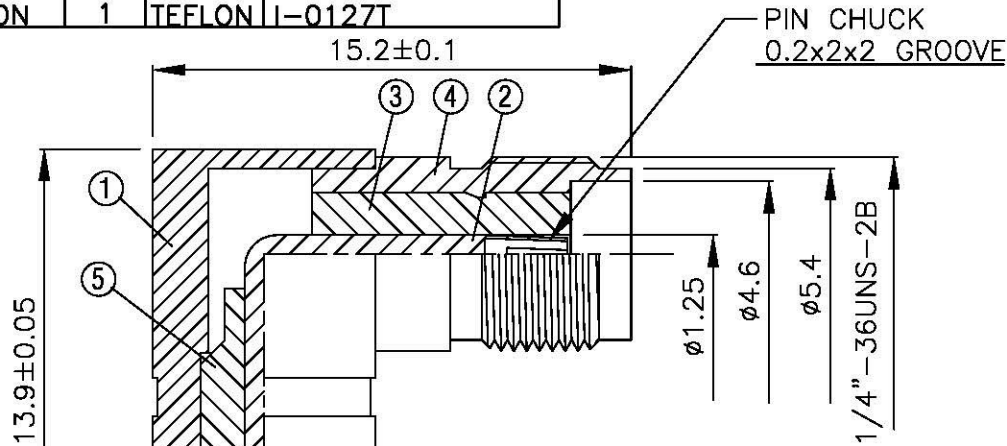
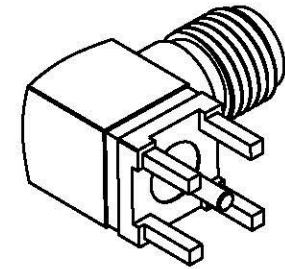
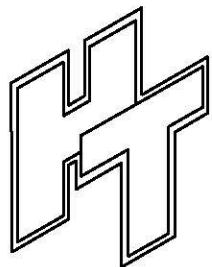


NO	DESCRIPTION	MATERIAL	QTY	FINISH	REMARK
1	BODY	BRASS	1	NICKEL	B-SMA0066-N
2	PIN	BRASS	1	GOLD	P-SMA0066-G
3	INSULATION	TEFLON	1	TEFLON	I-0126T
4	BODY	BRASS	1	NICKEL	B-SMA0065-N
5	INSULATION	TEFLON	1	TEFLON	I-0127T



PC MOUNTING



All Connectors
 www.allconnectors.de
 info@allconnectors.de
 Tel: +49 71 201 200-11
 Fax: +49 71 201 200-10
 72610 Gilderstätt - Germany

TITLE **SMA FEMALE PCB MOUNT**

PART NO. **SMA-11-TGN**

DRAWING NO. **SMA 11 TGN**

DRAWN	MARY	DATE	96.03.15
CHECKED	黄巧君	DATE	
Q.A.	蘇姿潔	DATE	
APPROVAL	徐燦霖	DATE	
REVISION		DATE	

DIMENSIONS ARE IN MILLIMETERS			
UNLESS OTHERWISE SPECIFIED TOLERANCE			
0.5-5=±0.2	120-315=±1		
5-30=±0.4	315-1000=±1.6		
30-120±0.6	1000-2000=±2.4		

SCALE 4:1 SIZE A

REVISION	
DESCRIPTION	ENGINEER