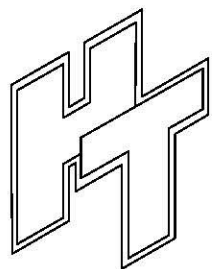
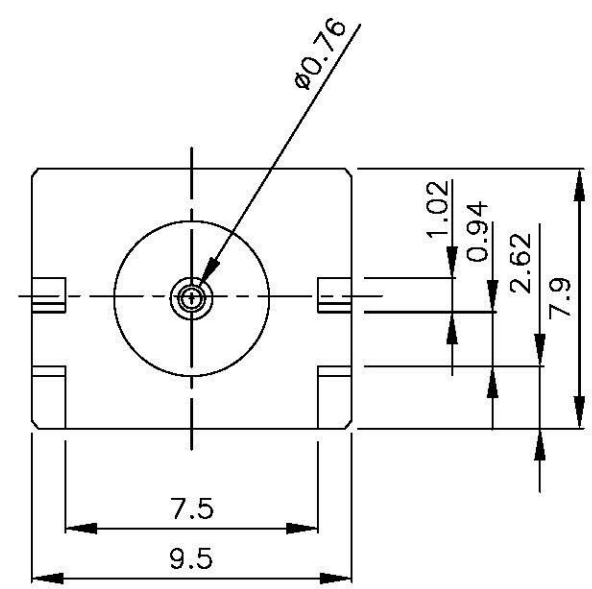
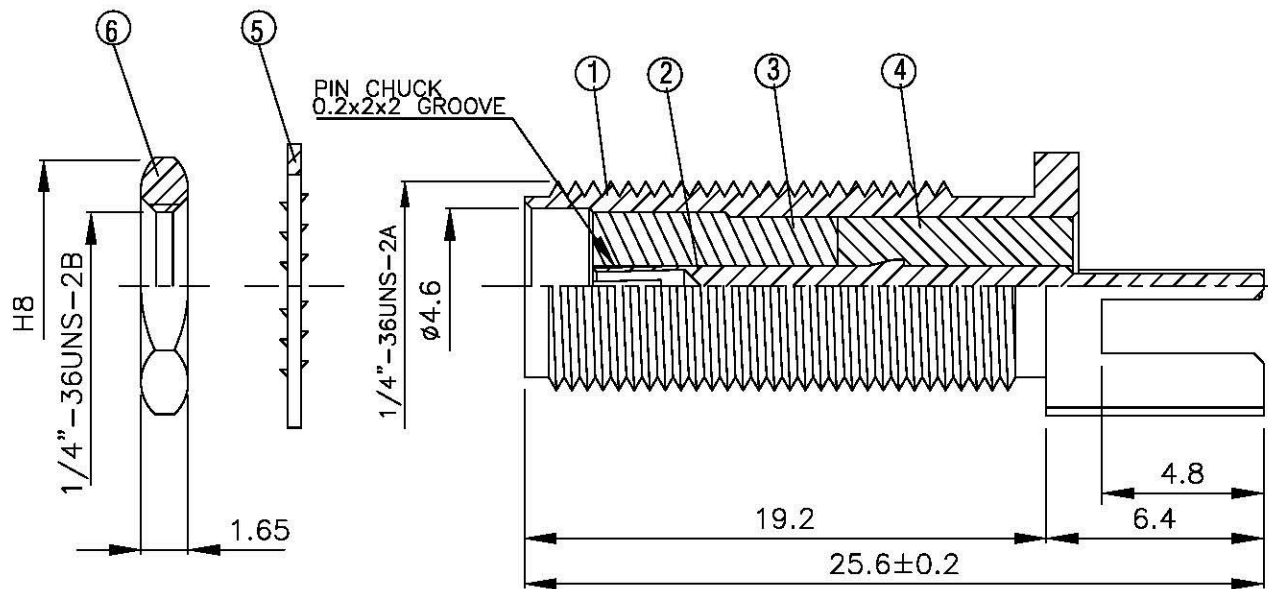
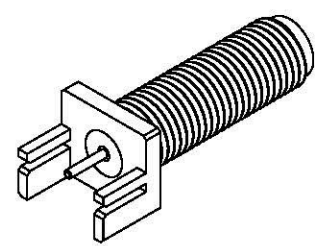
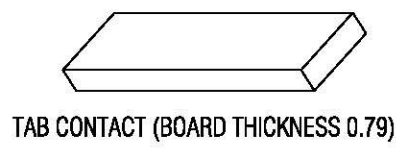


NO	DESCRIPTION	MATERIAL	Q'TY	FINISH	REMARK
1	BODY	BRASS	1	NICKEL	B-SMA0620-N
2	PIN	BE CU	1	GOLD	P-SMA0407-G
3	INSULATION 1	TEFLON	1	TEFLON	I-0289T
4	INSULATION 2	TEFLON	1	TEFLON	I-0318T
5	WASHER	BRASS	1	NICKEL	W-0016-N
6	NUT	BRASS	1	NICKEL	N-0006-N



**All Connectors**  
 www.allconnectors.de info@allconnectors.de  
 TEL: 0049 231 2812511 FAX: 0049 231 2812514  
 20091 Ulsterdahl - Germany 20091 Ulsterdahl - Germany

TITLE: **SMA FEMALE END LAUNCH**

PART NO.: **SMA-10V16-TGN**

DRAWING NO.: **SMA 10V16 TGN**

DRAWN: **MARY** DATE: **96.03.15**

CHECKED: **蘇姿潔** DATE: \_\_\_\_\_

Q.A.: **張育誌** DATE: \_\_\_\_\_

APPROVAL: **馮健華** DATE: \_\_\_\_\_

REVISION: \_\_\_\_\_ DATE: \_\_\_\_\_

DIMENSIONS ARE IN MILLIMETERS

UNLESS OTHERWISE SPECIFIED TOLERANCE

0.5-5=±0.2	120-315=±1
5-30=±0.4	315-1000=±1.6
30-120±0.6	1000-2000=±2.4

SCALE: 4:1 SIZE: A

REVISION	
DESCRIPTION	ENGINEER