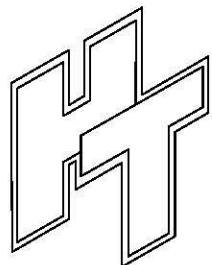
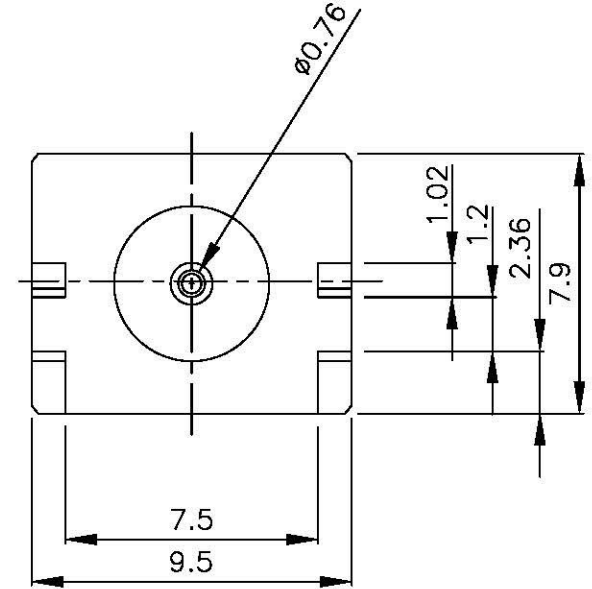
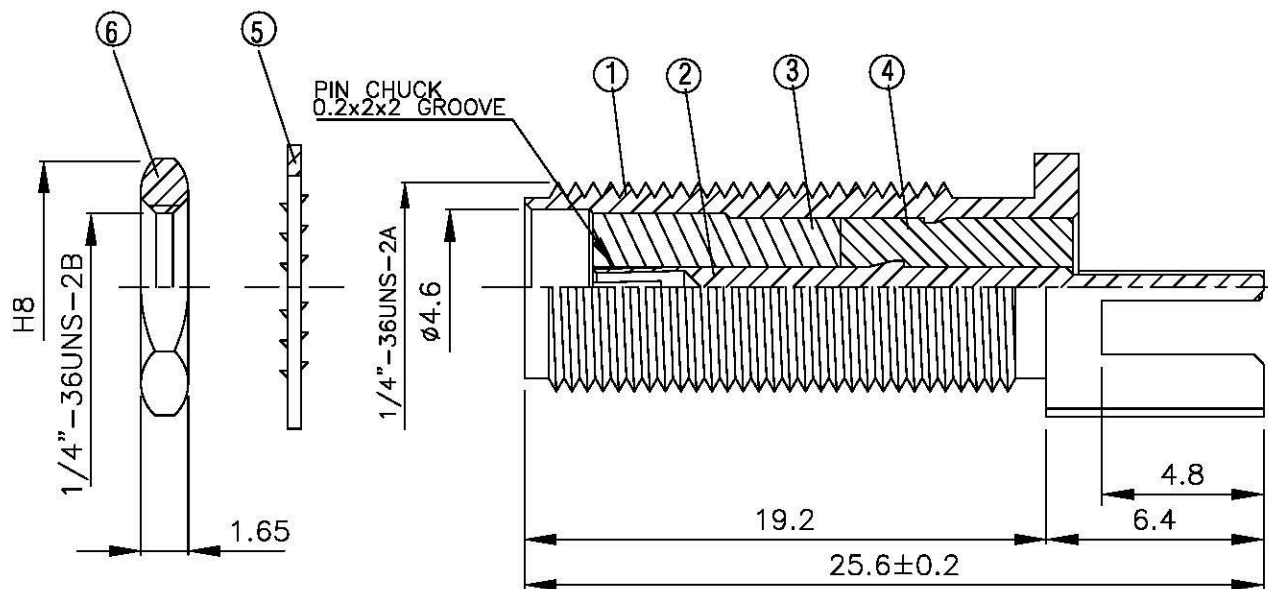
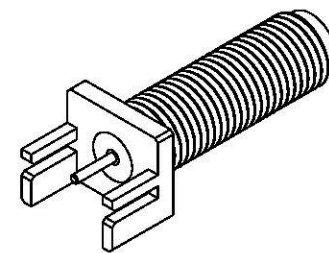


NO	DESCRIPTION	MATERIAL	QTY	FINISH	REMARK
1	BODY	BRASS	1	NICKEL	B-SMA0619-N
2	PIN	BE CU	1	GOLD	P-SMA0407-G
3	INSULATION	TEFLON	1	TEFLON	I-0289T
4	INSULATION	TEFLON	1	TEFLON	I-0318T
5	WASHER	BRASS	1	NICKEL	W-0016-N
6	NUT	BRASS	1	NICKEL	N-0006-N



All Connectors
 www.allconnectors.com info@allconnectors.com
 TEL: 0049 711 7002602 FAX: 0049 711 7002604
 70794 Filderstadt - Germany kettenstr. 25

**TITLE SMA FEMALE END LAUNCH
 TAB CONTACT (BOARD THICKNESS 1.07)**

PART NO. SMA-10V15-TGN

DRAWING NO. SMA 10V15 TGN

DRAWN MARY **DATE 96.03.27**

CHECKED 蘇姿潔 **DATE**

Q.A. 張育誌 **DATE**

APPROVAL 馮健華 **DATE**

REVISION **DATE**

DIMENSIONS ARE IN MILLIMETERS

UNLESS OTHERWISE SPECIFIED TOLERANCE

0.5-5=±0.2	120-315=±1
5-30=±0.4	315-1000=±1.6
30-120±0.6	1000-2000=±2.4

SCALE 4:1 **SIZE A**

REVISION	
DESCRIPTION	ENGINEER