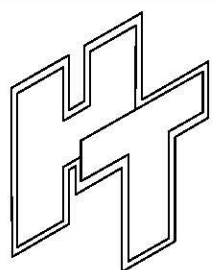
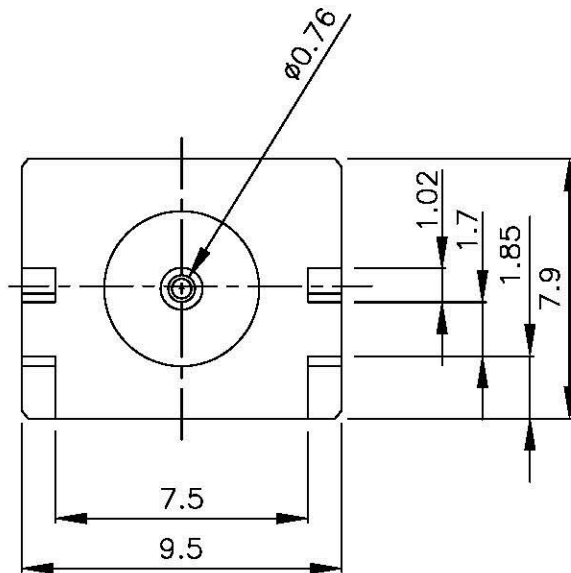
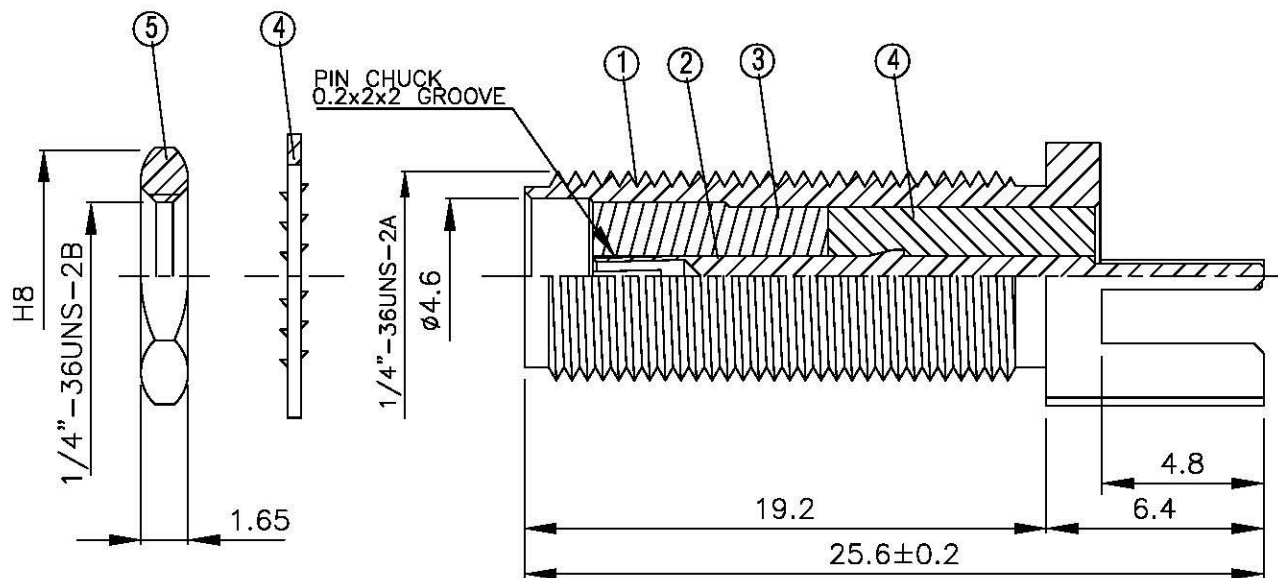
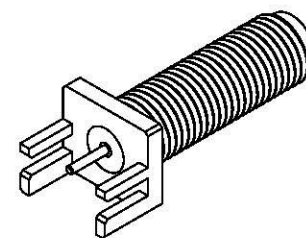


NO	DESCRIPTION	MATERIAL	Q'TY	FINISH	REMARK
1	BODY	BRASS	1	NICKEL	B-SMA0618-N
2	PIN	BE CU	1	GOLD	P-SMA0407-G
3	INSULATION 1	TEFLON	1	TEFLON	I-0289T
4	INSULATION 2	TEFLON	1	TEFLON	I-0318T
5	WASHER	BRASS	1	NICKEL	W-0016-N
	NUT	BRASS		NICKEL	N-0006-N



All Connectors
 140, 390 P.O. Box 111, Shenzhen, Guangdong, P.R. China
 Tel: 86-755-2311 8888
 Fax: 86-755-2311 8888
 E-mail: info@allconnectors.com

**TITLE SMA FEMALE END LAUNCH
 TAB CONTACT (BOARD THICKNESS 1.57)**

PART NO. SMA-10V14-TGN

DRAWING NO. SMA 10V14 TGN

DRAWN MARY **DATE 96.03.27**

CHECKED 黄巧君 **DATE**

Q.A. 蘇姿潔 **DATE**

APPROVAL 徐燦霖 **DATE**

REVISION **DATE**

DIMENSIONS ARE IN MILLIMETERS

UNLESS OTHERWISE SPECIFIED TOLERANCE

0.5-5 = ±0.2	120-315 = ±1
5-30 = ±0.4	315-1000 = ±1.6
30-120 = ±0.6	1000-2000 = ±2.4

SCALE 4:1 **SIZE A**

REVISION	
DESCRIPTION	ENGINEER