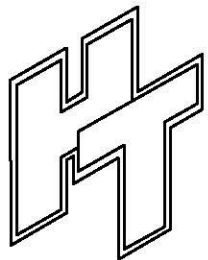
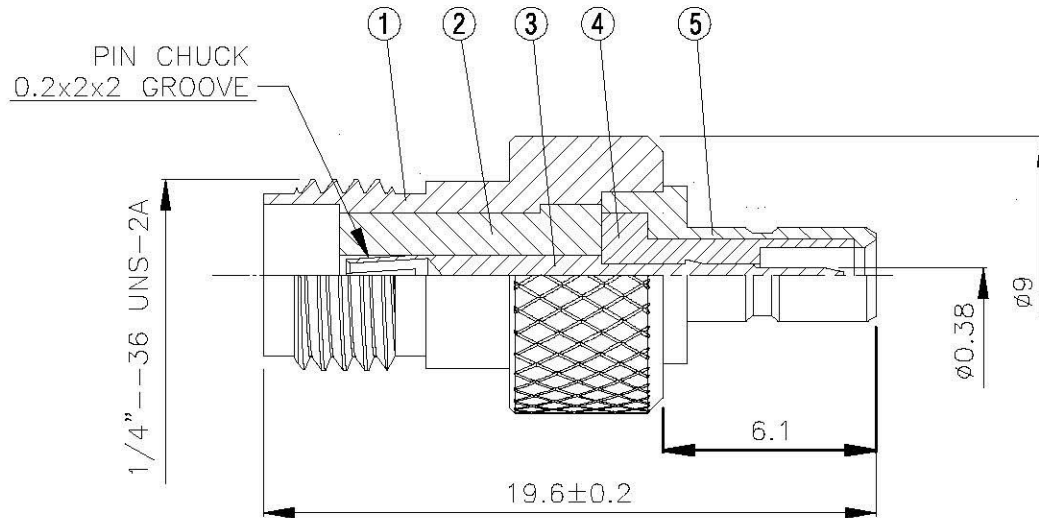
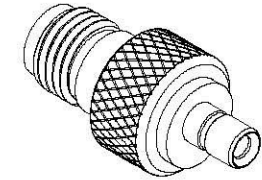


| NO | DESCRIPTION  | MATERIAL | Q'TY | FINISH |
|----|--------------|----------|------|--------|
| 1  | BODY 1       | BRASS    | 1    | GOLD   |
| 2  | INSULATION 1 | TEFLON   | 1    | TEFLON |
| 3  | PIN          | BE CU    | 1    | GOLD   |
| 4  | INSULATION 2 | TEFLON   | 1    | TEFLON |
| 5  | BODY 2       | BRASS    | 1    | GOLD   |



**All Connectors**

www.allconnectors.de  
Tel: +49 4103 3011-2000  
70794 Flörsbachtal, Germany

info@allconnectors.de  
Fax: +49 4103 3011-2000  
Karlshafenstr. 25

**TITLE SMA FEMALE - SSMB MALE ADAPTOR**

**PART NO. SMA-102-TGG**

**DRAWING NO. SMA 102 TGG**

**DRAWN** 蘇姿潔 **DATE** 98.02.03

**CHECKED** 蘇志欣 **DATE**

**Q.A.** 莊千慧 **DATE**

**APPROVAL** 徐燦霖 **DATE**

**REVISION** **DATE**

**DIMENSIONS ARE IN MILLIMETERS**

**UNLESS OTHERWISE SPECIFIED TOLERANCE**

0.5-5=±0.2    120-315=±1  
5-30= ±0.4    315-1000=±1.6  
30-120±0.6    1000-2000=±2.4

**SCALE** 4:1 **SIZE** A

**REVISION**

| DESCRIPTION | ENGINEER |
|-------------|----------|
|             |          |
|             |          |
|             |          |

D

D

C

C

B

B

A

A

4

3

2

1