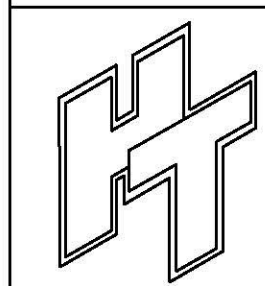
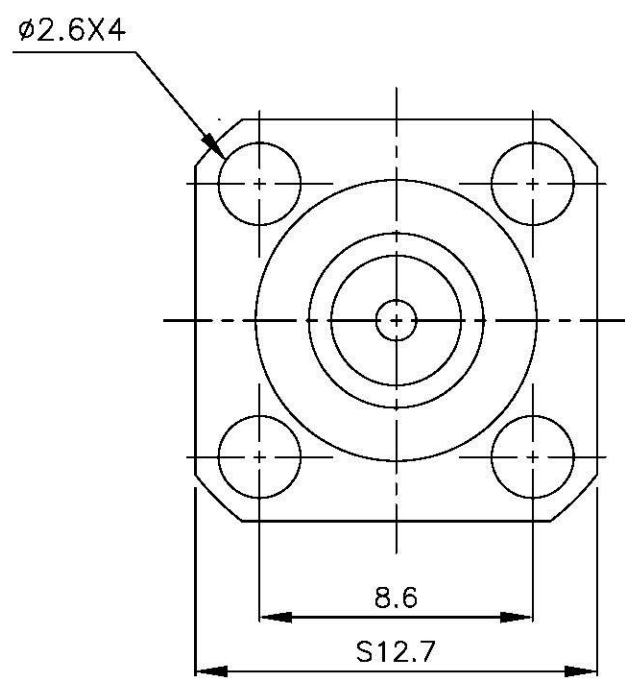
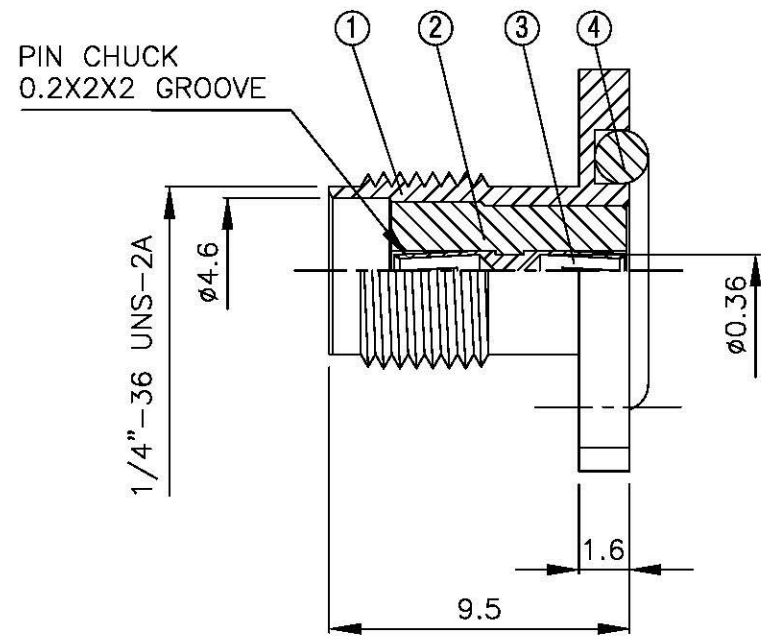
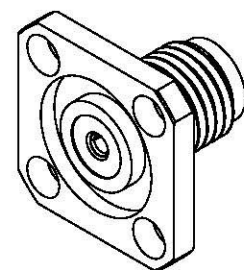


| NO | DESCRIPTION | MATERIAL | Q'TY | FINISH | REMARK |
|----|-------------|----------|------|--------|-------------|
| 1 | BODY | BRASS | 1 | NICKEL | B-SMA0685-N |
| 2 | INSULATION | TEFLON | 1 | TEFLON | I-0114T |
| 3 | PIN | BE CU | 1 | GOLD | P-SMA0036-G |
| 4 | GASKET | RUBBER | 1 | RUBBER | RU-0014 |



All Connectors
 www.allconnectors.de
 info@allconnectors.de
 Tel: 0049 231 7005501
 Fax: 0049 231 7005501
 20754 Fflessenbeck - Germany

TITLE SMA FEMALE LAUNCHERS WITH TRANSITION PINS

PART NO. SMA-07V12-TGN

DRAWING NO. SMA 07V12 TGN

DRAWN MARY **DATE** 96.03.16

CHECKED 蘇姿潔 **DATE**

Q.A. 張育誌 **DATE**

APPROVAL 馮健華 **DATE**

REVISION **DATE**

DIMENSIONS ARE IN MILLIMETERS

UNLESS OTHERWISE SPECIFIED TOLERANCE

| | |
|------------|----------------|
| 0.5-5=±0.2 | 120-315=±1 |
| 5-30=±0.4 | 315-1000=±1.6 |
| 30-120±0.6 | 1000-2000=±2.4 |

SCALE 4:1 **SIZE** A

| REVISION | |
|-------------|----------|
| DESCRIPTION | ENGINEER |
| | |
| | |
| | |